

MATERIAL & FINISH:

- 1 BODY: BRASS, NICKEL PLATE
- 2 CENTER CONTACT: BERYLLIUM COPPER ALLOY, GOLD PLATED
- 3 INSULATOR: PTFE & PEI
- 4 SPRING WASHER: STAINLESS STEEL
- 5 SCREW: STEEL

ENVIRONMENTAL DATA:

- 1 TEMPERATURE RANGE: -55°C~+125°C
- 2 2011/65/EU(RoHS) AND 2015/863/(RoHS): COMPLIANT
- 3 1999/2006/EC(REACH): COMPLIANT

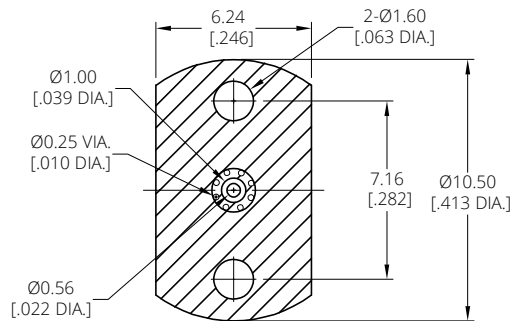
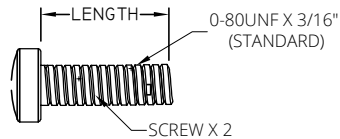
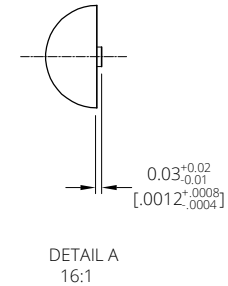
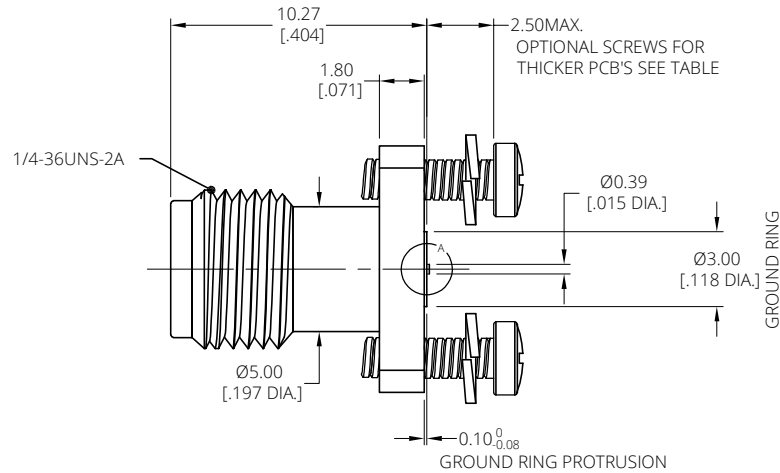
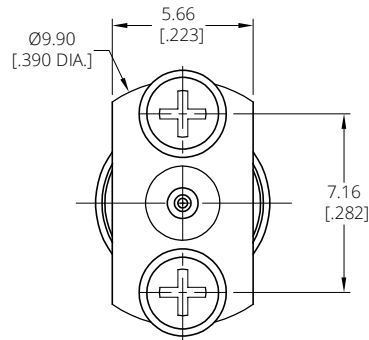
ELECTRICAL DATA:

- 1 IMPEDANCE: 50 Ω
- 2 FREQUENCY RANGE: DC~40 GHz
- 3 VSWR: 1.30 MAX.

NOTES:

0-80UNF-2A SCREW TIGHTENING TORQUE IS 0.09N.M

REVISIONS			
REV.	DESCRIPTION	DATE	APPROVED
A	INITIAL RELEASE	05/31/24	J. Q



PCB LAYOUT RECOMMENDATIONS

P/N	SCREW LENGTH	PCB THICKNESS
ANO 2912-3203	4.76[3/16"]	2.5[098] MAX. STANDARD (ALREADY INCLUDED WITH THE CONNECTOR)
ANO 2912-3203-1	6.35[1/4"]	1.8[071]~4.2[165] (OPTIONAL)
ANO 2912-3203-2	7.94[5/16"]	3.2[126]~5.7[224] (OPTIONAL)
ANO 2912-3203-3	9.53[3/8"]	4.8[189]~7.5[295] (OPTIONAL)
ANO 2912-3203-4	11.11[7/16"]	6.4[252]~8.9[350] (OPTIONAL)

DRAWN	W. Y	DATE	05/31/24
CHECKED	P. C	DATE	05/31/24
APPROVED	J. Q	DATE	05/31/24



TITLE
2.92MM STRAIGHT FEMALE PCB END LAUNCH

UNLESS OTHERWISE SPECIFIED DIMENSIONS ARE IN MILLIMETERS, DIMENSIONS IN [] ARE IN INCHES FOR CUSTOMER REFERENCE ONLY UNLESS OTHERWISE SPECIFIED TOLERANCE ARE:
 XX ±0.13 [005"]
 X ±0.20 [008"]
 X ±0.50 [019"]
 X° ±1°
 X° ±2°

THESE DRAWINGS AND SPECIFICATIONS ARE THE PROPERTY OF ANOISON ELECTRONICS LTD AND SHOULD NOT BE USED WITHOUT WRITTEN PERMISSION COPYRIGHT © 2024 ANOISON ELECTRONICS LTD

VIEW	PART NO. ANO 2912-3203		
SIZE A3	SCALE 8:1	SHEET 1/1	REV. A