

4 3 2 1

**MATERIAL & FINISH:**

- 1 BODY: STAINLESS STEEL, PASSIVATED
- 2 CENTER CONTACT: BERYLLIUM COPPER, GOLD PLATED
- 3 INSULATOR: PEI

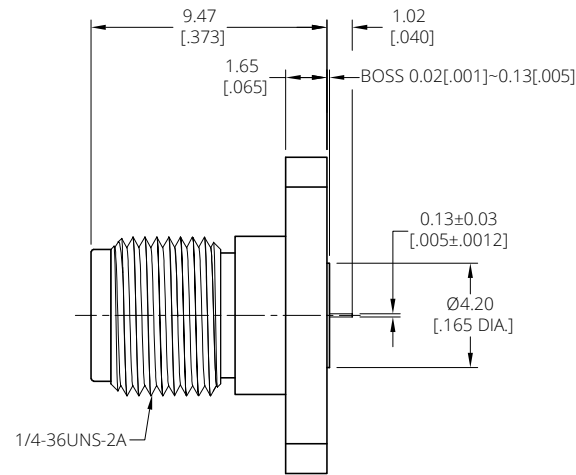
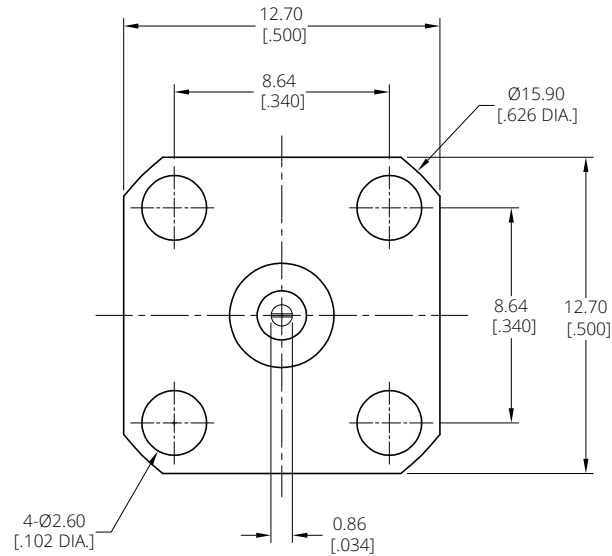
**ENVIRONMENTAL DATA:**

- 1 TEMPERATURE RANGE: -55°C~+125°C
- 2 2011/65/EU(RoHS) AND 2015/863/(RoHS): COMPLIANT
- 3 1907/2006/EC(REACH): COMPLIANT

**ELECTRICAL DATA:**

- 1 IMPEDANCE: 50 Ω
- 2 FREQUENCY RANGE: DC~27 GHz
- 3 VSWR: 1.20 MAX.
- 4 INSERTION LOSS: -0.20 dB MIN.
- 5 CONTACT TORQUE: 4.0 INCH-OUNCES MIN.
- 6 CONTACT RADIAL TORQUE: 6 lb. MIN.

REVISIONS			
REV.	DESCRIPTION	DATE	APPROVED
A	INITIAL RELEASE	01/30/24	J. Q



DRAWN	X. Y	DATE	01/30/24
CHECKED	W. Y	DATE	01/30/24
APPROVED	J. Q	DATE	01/30/24

UNLESS OTHERWISE SPECIFIED DIMENSIONS ARE IN MILLIMETERS, DIMENSIONS IN [ ] ARE IN INCHES FOR CUSTOMER REFERENCE ONLY UNLESS OTHERWISE SPECIFIED TOLERANCE ARE:

XX	±0.13 [0.005"]
X	±0.20 [0.008"]
X	±0.50 [0.019"]
X°	±1°
X°	±2°

THESE DRAWINGS AND SPECIFICATIONS ARE THE PROPERTY OF ANOISON ELECTRONICS LTD AND SHOULD NOT BE USED WITHOUT WRITTEN PERMISSION COPYRIGHT © 2024 ANOISON ELECTRONICS LTD



TITLE  
2.92MM STRAIGHT FEMALE, 4-HOLE FLANGE MOUNT RECEPTACLE .500 SQ.

VIEW	PART NO. ANO 2912-3200		
	SIZE A3	SCALE 5:1	SHEET 1/1
			REV. A

4 3 2 1