

MATERIAL & FINISH:

- 1 BODY: STAINLESS STEEL, PASSIVATED
- 2 CENTER CONTACT: BERYLLIUM COPPER, GOLD PLATED
- 3 INSULATOR: PEI

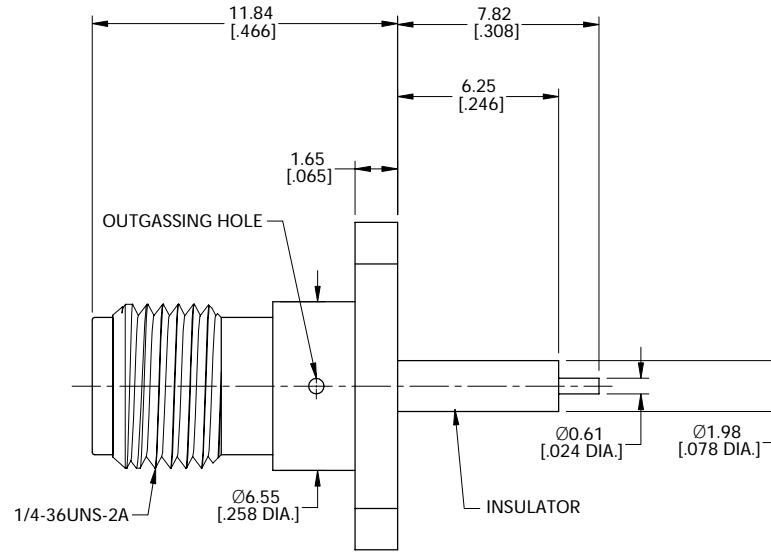
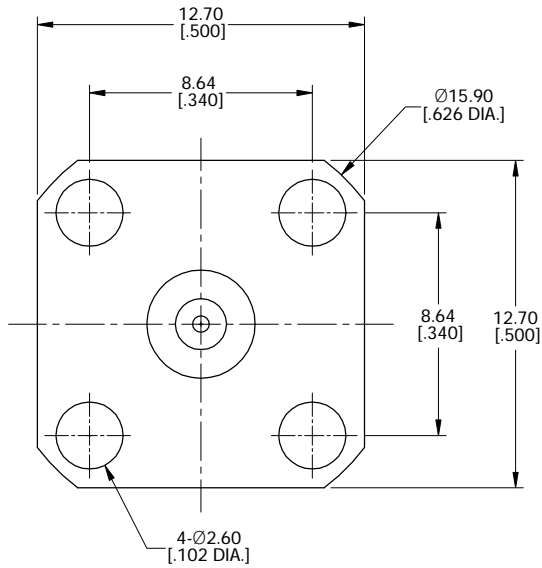
ENVIRONMENTAL DATA:

- 1 TEMPERATURE RANGE: -55°C ~ +125°C
- 2 2011/65/EU(RoHS) AND 2015/863/(RoHS): COMPLIANT
- 3 1907/2006/EC(REACH): COMPLIANT

ELECTRICAL DATA:

- 1 IMPEDANCE: 50 Ω
- 2 FREQUENCY RANGE: DC~40 GHz
- 3 VSWR: 1.25 MAX.
- 4 INSERTION LOSS: 0.06 X √F(GHz) dB MAX.
- 5 RF LEAKAGE: -60 + F(GHz) dB MAX.

REVISIONS			
REV.	DESCRIPTION	DATE	APPROVED
A	INITIAL RELEASE	01/24/24	J. Q
B	INSERTION LOSS AND RF LEAKAGE ADDED	01/30/24	J. Q



DRAWN	X. Y	DATE	01/30/24
CHECKED	W. Y	DATE	01/30/24
APPROVED	J. Q	DATE	01/30/24
UNLESS OTHERWISE SPECIFIED DIMENSIONS ARE IN MILLIMETERS, DIMENSIONS IN [] ARE IN INCHES FOR CUSTOMER REFERENCE ONLY UNLESS OTHERWISE SPECIFIED TOLERANCE ARE:		THESE DRAWINGS AND SPECIFICATIONS ARE THE PROPERTY OF ANOISON ELECTRONICS LTD AND SHOULD NOT BE USED WITHOUT WRITTEN PERMISSION COPYRIGHT © 2024 ANOISON ELECTRONICS LTD	
.XX	±0.13 [005"]		
.X	±0.20 [008"]		
X	±0.50 [019"]		
.X°	±1°		
X°	±2°		



TITLE
2.92MM STRAIGHT FEMALE, 4-HOLE FLANGE MOUNT RECEPTACLE
.500 SQ., EXTENDED DIELECTRIC, POST CONTACT

VIEW	PART NO. ANO 2912-3199		
	SIZE A3	SCALE 5:1	SHEET 1/1
		REV. B	