

4 3 2 1

1.0 MATERIAL & FINISH:

- 1.1 BODY: STAINLESS STEEL, PASSIVATED
- 1.2 CENTER CONTACT: BERYLLIUM COPPER ALLOY, GOLD PLATED
- 1.3 INSULATOR: PEI

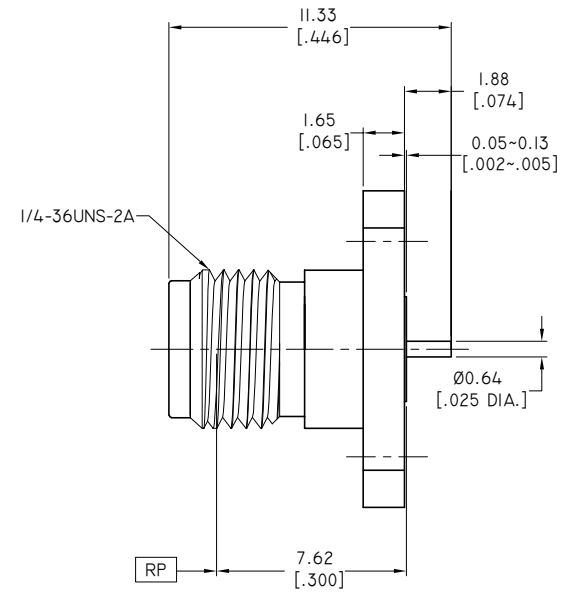
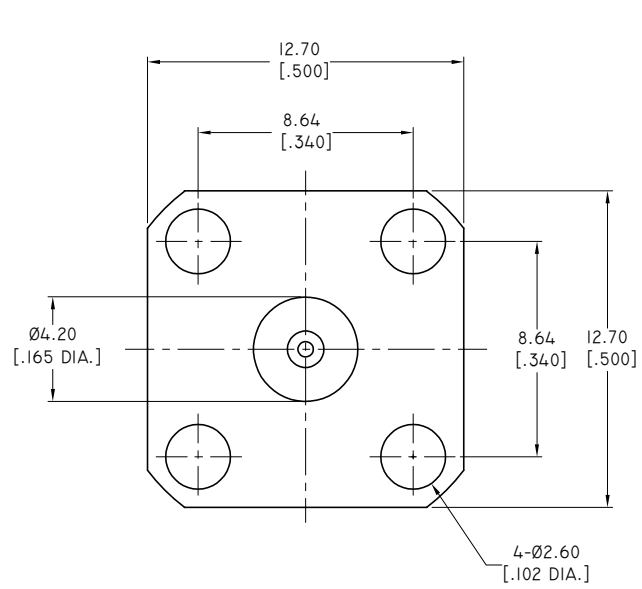
2.0 ENVIRONMENTAL DATA:

- 2.1 TEMPERATURE RANGE: -55°C~+125°C
- 2.2 2011/65/EU (RoHS): COMPLIANT

3.0 ELECTRICAL DATA:

- 3.1 IMPEDANCE: 50 Ω
- 3.2 FREQUENCY RANGE: DC~40 GHZ
- 3.3 VSWR: 1.10 MAX. AT DC~27 GHZ
1.15 MAX. AT 27~40 GHZ
- 3.4 INSERTION LOSS: 0.5 DB MAX.
- 3.5 RF LEAKAGE: ≤-100 DB

REVISIONS			
REV.	DESCRIPTION	DATE	APPROVED
A	INITIAL RELEASE	04/10/20	J. QU



DRAWN	L. YANG	DATE	04/10/20
CHECKED	W. YANG	DATE	04/10/20
APPROVED	J. QU	DATE	04/10/20
UNLESS OTHERWISE SPECIFIED DIMENSIONS ARE IN MILLIMETERS, DIMENSIONS IN [] ARE IN INCHES FOR CUSTOMER REFERENCE ONLY UNLESS OTHERWISE SPECIFIED TOLERANCE ARE:		THESE DRAWINGS AND SPECIFICATIONS ARE THE PROPERTY OF ANOISON ELECTRONICS LTD AND SHOULD NOT BE USED WITHOUT WRITTEN PERMISSION COPYRIGHT © 2020 ANOISON ELECTRONICS LTD	
.XX	±0.08 [1.003"]		
.X	±0.20 [1.008"]		
X	±0.50 [1.019"]		
.X°	±1°		
X°	±2°		

TITLE
2.92MM FEMALE, 4 HOLE FLANGE MOUNT POST CONTACT

PART NO.
ANO 2912-3142

VIEW		SIZE	SCALE	SHEET	REV.
		A3	5:1	1/1	A

D
C
B
A

D
C
B
A

4 3 2 1