

4

3

2

1

**MATERIAL & FINISH**

- 1 BODY: STAINLESS STEEL, PASSIVATED
- 2 CENTER CONTACT: BERYLLIUM COPPER ALLOY, GOLD PLATED
- 3 INSULATOR: PEI

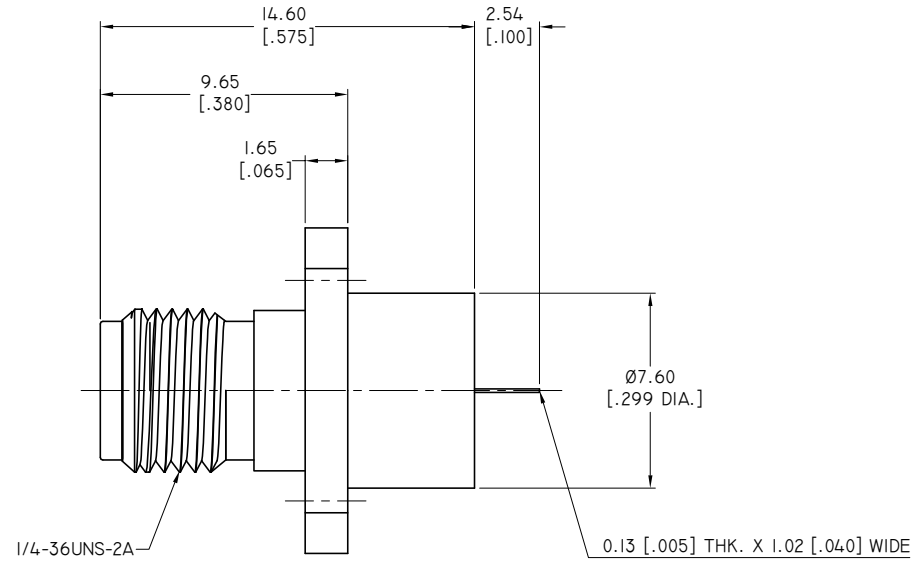
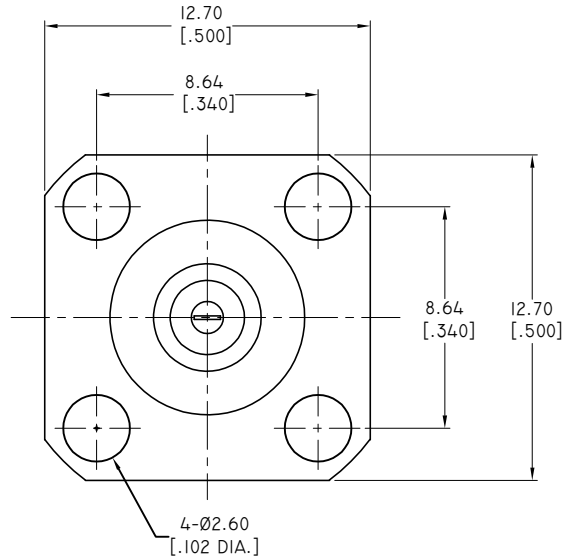
**ENVIRONMENTAL DATA:**

- 1 TEMPERATURE RANGE: -55°C~+125°C
- 2 2011/65/EU (RoHS): COMPLIANT

| REVISIONS |                 |          |          |
|-----------|-----------------|----------|----------|
| REV.      | DESCRIPTION     | DATE     | APPROVED |
| A         | INITIAL RELEASE | 07/15/16 | J. QU    |
|           |                 |          |          |

**ELECTRICAL DATA:**

- 1 IMPEDANCE: 50 OHMS
- 2 FREQUENCY RANGE: DC~40 GHZ



|   |                |  |          |
|---|----------------|--|----------|
| DRAWN   | X. B. YANG     | DATE   | 07/15/16 |
| CHECKED   | L. YANG        | DATE   | 07/15/16 |
| APPROVED  | J. QU          | DATE   | 07/15/16 |
| UNLESS OTHERWISE SPECIFIED DIMENSIONS ARE IN MILLIMETERS, DIMENSIONS IN [ ] ARE IN INCHES FOR CUSTOMER REFERENCE ONLY UNLESS OTHERWISE SPECIFIED TOLERANCE ARE: |                | THESE DRAWINGS AND SPECIFICATIONS ARE THE PROPERTY OF ANOISON ELECTRONICS LTD AND SHOULD NOT BE USED WITHOUT WRITTEN PERMISSION COPYRIGHT © 2016 ANOISON ELECTRONICS LTD |          |
| .XX   | ±0.13 [0.005"] |  |          |
| .X  | ±0.20 [0.008"] |  |          |
| X   | ±0.50 [0.019"] |  |          |
| .X°   | ±1°            |  |          |
| X°  | ±2°            |  |          |



TITLE  
2.92MM FEMALE, 4 HOLE FLANGE MOUNT  
TAB CONTACT

|      |                           |       |       |      |
|------|---------------------------|-------|-------|------|
| VIEW | PART NO.<br>ANO 2912-3075 |       |       |      |
|      | SIZE                      | SCALE | SHEET | REV. |
|      | A3                        | 5:1   | 1/1   | A    |

4

3

2

1

D

C

B

A

D

C

B

A