

1.0 MATERIAL & FINISH

- 1.1 BODY: STAINLESS STEEL, PASSIVATED
- 1.2 CENTER CONTACT: BERYLLIUM COPPER ALLOY, GOLD PLATING
- 1.3 INSULATOR: PEI & PTFE

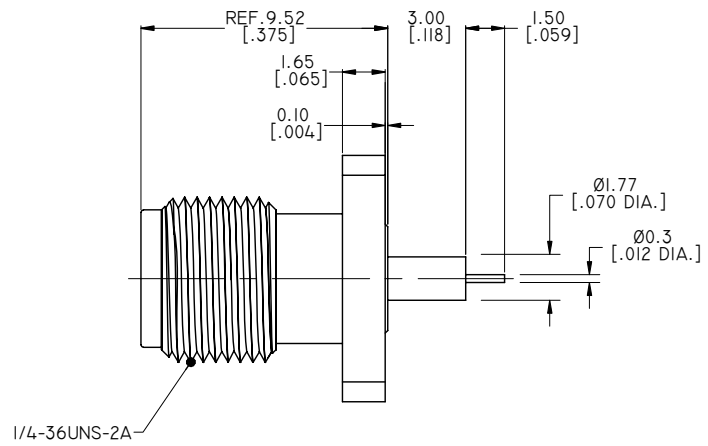
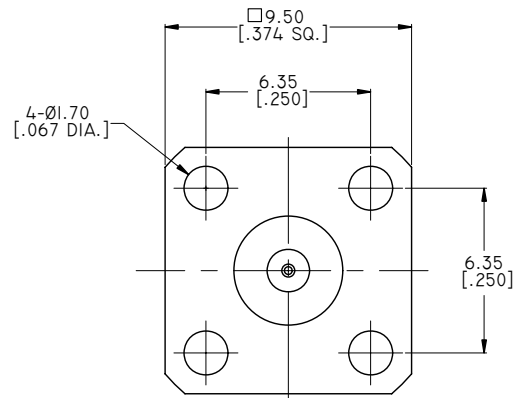
2.0 ENVIRONMENTAL DATA:

- 2.1 TEMPERATURE RANGE: -55°C~+125°C
- 2.2 2011/65/EU (RoHS): COMPLIANT

3.0 ELECTRICAL SPECIFICATIONS:

- 3.1 IMPEDANCE: 50 Ω
- 3.2 FREQUENCY RANGE: DC~40GHZ
- 3.3 VSWR: ≤1.15

REVISIONS			
REV.	DESCRIPTION	DATE	APPROVED
A	INITIAL RELEASE	06/10/15	J. QU
B	DRAWING FORMAT CHANGED	08/17/17	J. QU



DRAWN	P. CHAN	DATE	08/17/17
CHECKED	X. B. YANG	DATE	08/17/17
APPROVED	J. QU	DATE	08/17/17

UNLESS OTHERWISE SPECIFIED DIMENSIONS ARE IN MILLIMETERS, DIMENSIONS IN [] ARE IN INCHES FOR CUSTOMER REFERENCE ONLY UNLESS OTHERWISE SPECIFIED TOLERANCE ARE:

.XX	±0.13 [0.005"]
.X	±0.20 [0.008"]
X	±0.50 [0.019"]
.X°	±1°
X°	±2°

THESE DRAWINGS AND SPECIFICATIONS ARE THE PROPERTY OF ANOISON ELECTRONICS LTD AND SHOULD NOT BE USED WITHOUT WRITTEN PERMISSION COPYRIGHT © 2017 ANOISON ELECTRONICS LTD



TITLE
2.92MM STRAIGHT FEMALE, 4 HOLES FLANGE LAUNCHERS

VIEW	PART NO. ANO 2912-3063		
SIZE A3	SCALE 5:1	SHEET 1/1	REV. B