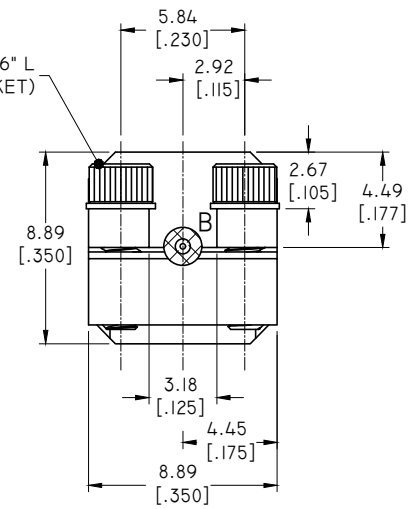
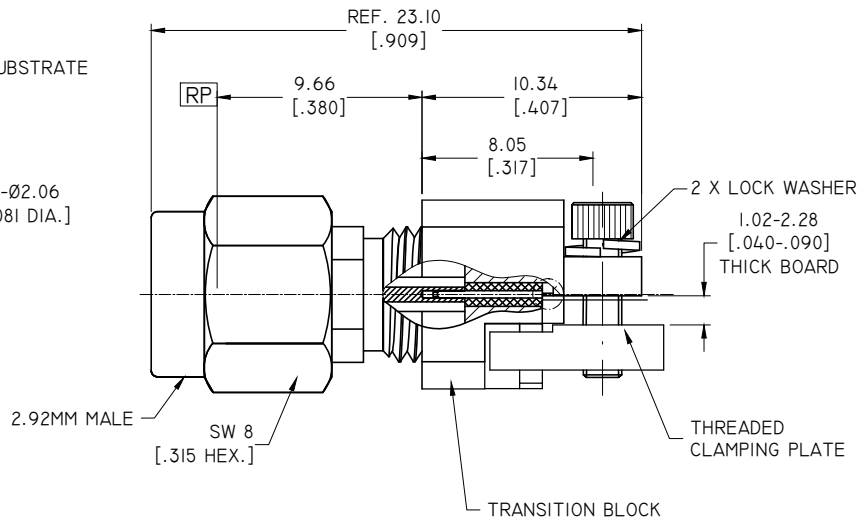
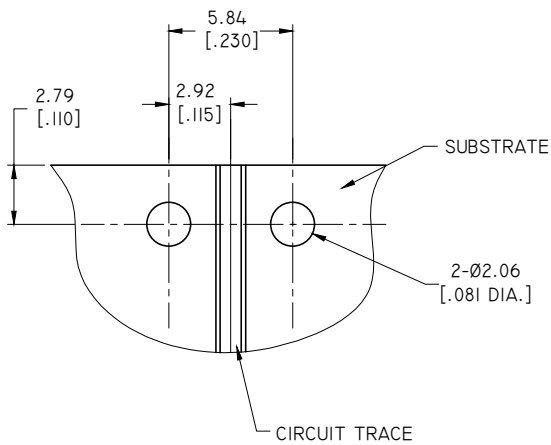


REVISIONS			
REV.	DESCRIPTION	DATE	APPROVED
A	INITIAL RELEASE	11/03/23	J. Q

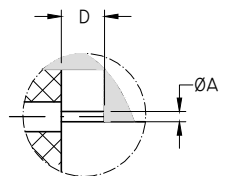


- 2.92MM CONNECTOR**
1. BODY: STAINLESS STEEL, PASSIVATED
 2. CENTER CONTACT: BERYLLIUM COPPER ALLOY, GOLD PLATED
 3. INSULATOR: PEI
 4. COUPLING NUT: STAINLESS STEEL, PASSIVATED
 5. RETAINING RING: BERYLLIUM COPPER ALLOY, NICKEL PLATED

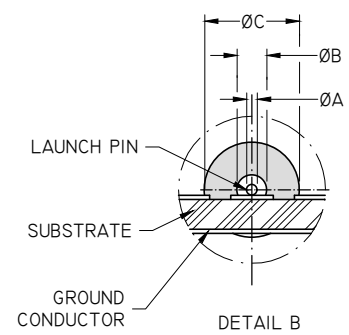
- TRANSITION BLOCK**
1. TRANSITION BLOCK: BRASS, NICKEL PLATED
 2. THREADED CLAMPING PLATE: BRASS, NICKEL PLATED
 3. LAUNCH PIN: BERYLLIUM COPPER ALLOY, GOLD PLATED
 4. TRANSITION BLOCK DIELECTRIC: PTFE

- ENVIRONMENTAL DATA:**
1. TEMPERATURE RANGE: -55°C~+125°C
 2. 2011/65/EU (RoHS): COMPLIANT

- ELECTRICAL SPECIFICATIONS:**
1. IMPEDANCE: 50 Ω
 2. FREQUENCY RANGE: DC~40 GHz



DETAIL A



DETAIL B

PART NO.	Ø A	Ø B	Ø C	D
ANO 291-D1	0.13 [.005]	0.23 [.009]	0.74 [.0290]	0.76 [.030]
ANO 291-D2	0.18 [.007]	0.31 [.012]	0.99 [.0390]	0.76 [.030]
ANO 291-D3	0.25 [.010]	0.51 [.020]	1.61 [.0635]	1.27 [.050]

DRAWN	L. Y	DATE	11/03/23
CHECKED	W. Y	DATE	11/03/23
APPROVED	J. Q	DATE	11/03/23
UNLESS OTHERWISE SPECIFIED DIMENSIONS ARE IN MILLIMETERS. DIMENSIONS IN [] ARE IN INCHES FOR CUSTOMER REFERENCE ONLY UNLESS OTHERWISE SPECIFIED TOLERANCE ARE:		THESE DRAWINGS AND SPECIFICATIONS ARE THE PROPERTY OF ANOISON ELECTRONICS LTD AND SHOULD NOT BE USED WITHOUT WRITTEN PERMISSION COPYRIGHT © 2023 ANOISON ELECTRONICS LTD	
	.XX	±0.13 [.005"]	
	.X	±0.20 [.008"]	
	X	±0.50 [.019"]	
	.X°	±1°	
	X°	±2°	



TITLE			
2.92MM MALE END LAUNCH CONNECTOR THD-IN SUPER SMALL			
VIEW		PART NO.	
		ANO 291-DX	
SIZE	SCALE	SHEET	REV.
A3	4:1	1/1	A