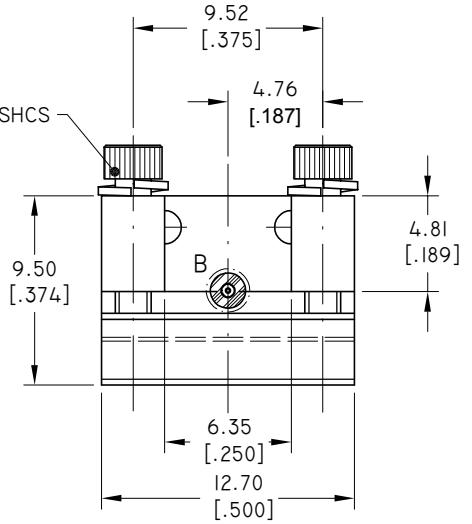
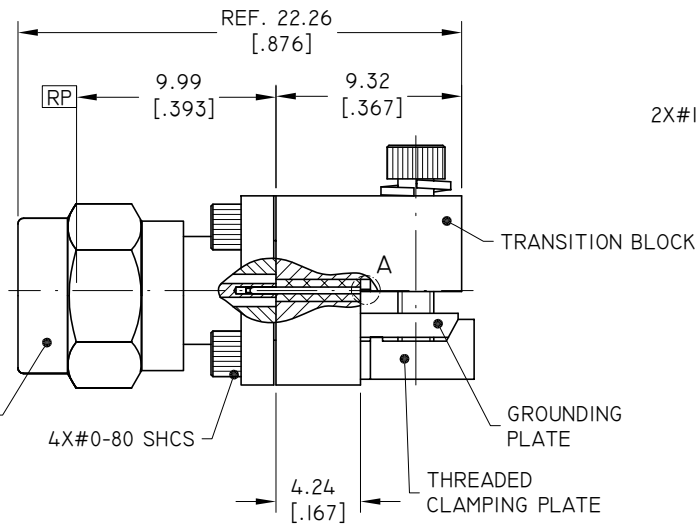
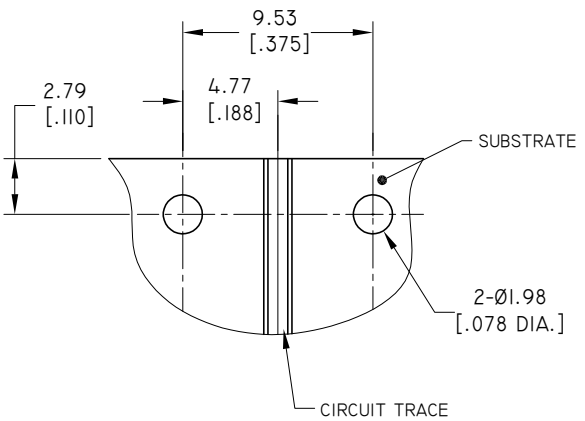


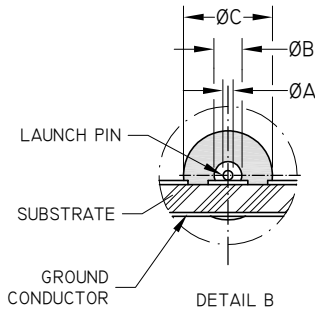
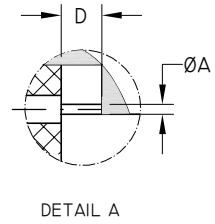
REVISIONS			
REV.	DESCRIPTION	DATE	APPROVED
A	INITIAL RELEASE	08/01/15	J. QU
B	DRAWING FORMAT CHANGED	08/16/17	J. QU
C	2.92 COUPLING NUT CHANGED	11/09/20	J. QU



- 2.92MM CONNECTOR**
1. BODY: STAINLESS STEEL, PASSIVATED
  2. CENTER CONTACT: BERYLLIUM COPPER ALLOY, GOLD PLATED
  3. INSULATOR: PEI
  4. COUPLING NUT: STAINLESS STEEL, PASSIVATED
- TRANSITION BLOCK**
1. TRANSITION BLOCK: BRASS, NICKEL PLATED
  2. GROUNDING PLATE: BRASS, NICKEL PLATED
  3. THREADED CLAMPING PLATE: BRASS, NICKEL PLATED
  4. LAUNCH PIN: BERYLLIUM COPPER ALLOY, GOLD PLATED
  5. TRANSITION BLOCK DIELECTRIC: PTFE

- ENVIRONMENTAL DATA:**
1. TEMPERATURE RANGE: -55°C~+125°C
  2. 2011/65/EU (RoHS): COMPLIANT

- ELECTRICAL SPECIFICATIONS:**
1. IMPEDANCE: 50 Ω
  2. FREQUENCY RANGE: DC~40 GHz



PART NO.	Ø A	Ø B	Ø C	D
ANO 291-A1-H	0.13 [.005]	0.23 [.009]	0.74 [.0290]	0.76 [.030]
ANO 291-A2-H	0.18 [.007]	0.31 [.012]	0.99 [.0390]	0.76 [.030]
ANO 291-A3-H	0.18 [.007]	0.38 [.015]	1.22 [.0480]	0.76 [.030]
ANO 291-A4-H	0.25 [.010]	0.51 [.020]	1.61 [.0635]	1.27 [.050]

DRAWN	W. YANG	DATE	11/09/20
CHECKED	X. B. YANG	DATE	11/09/20
APPROVED	J. QU	DATE	11/09/20
UNLESS OTHERWISE SPECIFIED DIMENSIONS ARE IN MILLIMETERS, DIMENSIONS IN [ ] ARE IN INCHES FOR CUSTOMER REFERENCE ONLY UNLESS OTHERWISE SPECIFIED TOLERANCE ARE:		THESE DRAWINGS AND SPECIFICATIONS ARE THE PROPERTY OF ANOISON ELECTRONICS LTD AND SHOULD NOT BE USED WITHOUT WRITTEN PERMISSION COPYRIGHT © 2020 ANOISON ELECTRONICS LTD	
.XX	±0.13 [.005"]		
.X	±0.20 [.008"]		
X	±0.50 [.019"]		
X°	±1°		
X°	±2°		

**ANOISON**

TITLE: 2.92MM MALE END LAUNCH CONNECTOR

VIEW:

PART NO. ANO 291-AX-H

SIZE	SCALE	SHEET	REV.
A3	4:1	1/1	C