

4

3

2

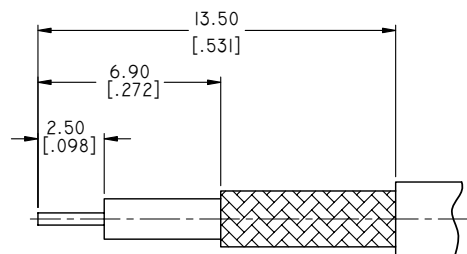
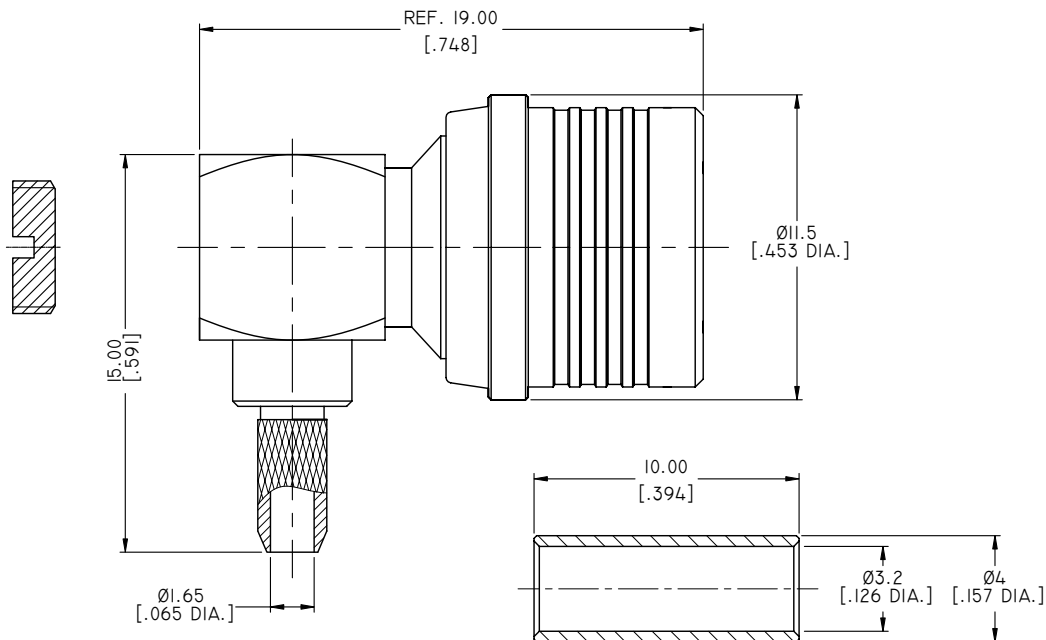
1

REVISIONS			
REV.	DESCRIPTION	DATE	APPROVED
F	TECHNICAL DATA ADDED	08/07/13	J. QU
G	DRAWING FORMAT CHANGED	08/28/17	J. QU

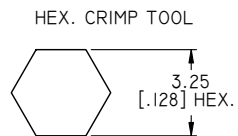
1.0 MATERIAL & FINISH  
 1.1 BODY: BRASS, ALBALOY  
 1.2 CENTER CONTACT: BRASS, GOLD PLATED  
 1.3 INSULATOR: PTFE  
 1.4 UNLOCK SEEVE: BRASS, NICKEL PLATED

2.0 ENVIRONMENTAL DATA:  
 2.1 TEMPERATURE RANGE: -55°C~+125°C  
 2.2 2011/65/EU (RoHS): COMPLIANT

3.0 ELECTRICAL SPECIFICATIONS:  
 3.1 IMPEDANCE: 50 Ω  
 3.2 FREQUENCY RANGE: DC~18GHZ  
 3.3 VSWR: ≤1.40 AT DC~6GHZ



CABLE STRIPPING DIMENSIONS



CRIMP WIDTH: 7.5 [.295]

DRAWN	L. YANG	DATE	08/28/17
CHECKED	X. B. YANG	DATE	08/28/17
APPROVED	J. QU	DATE	08/28/17
UNLESS OTHERWISE SPECIFIED DIMENSIONS ARE IN MILLIMETERS. DIMENSIONS IN [ ] ARE IN INCHES FOR CUSTOMER REFERENCE ONLY UNLESS OTHERWISE SPECIFIED TOLERANCE ARE:		THESE DRAWINGS AND SPECIFICATIONS ARE THE PROPERTY OF ANOISON ELECTRONICS LTD AND SHOULD NOT BE USED WITHOUT WRITTEN PERMISSION COPYRIGHT © 2017 ANOISON ELECTRONICS LTD	
.XX	±0.13 [.005"]		
.X	±0.20 [.008"]		
X	±0.50 [.019"]		
.X°	±1°		
X°	±2°		



TITLE  
 QMA RIGHT ANGLE MALE CRIMP FOR  
 RG316/RG174/LMR100

VIEW		PART NO. ANO 2621-2015			
SIZE	SCALE	SHEET	REV.		
A3	5:1	I/1	G		

4

3

2

1