

1.0 MATERIAL & FINISH:

- 1.1 BODY: BRASS, GOLD PLATED
- 1.2 CENTER CONTACT: BERYLLIUM COPPER ALLOY, GOLD PLATED
- 1.3 INSULATOR: PTFE

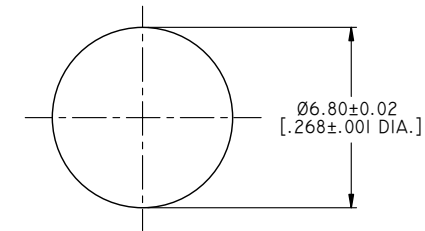
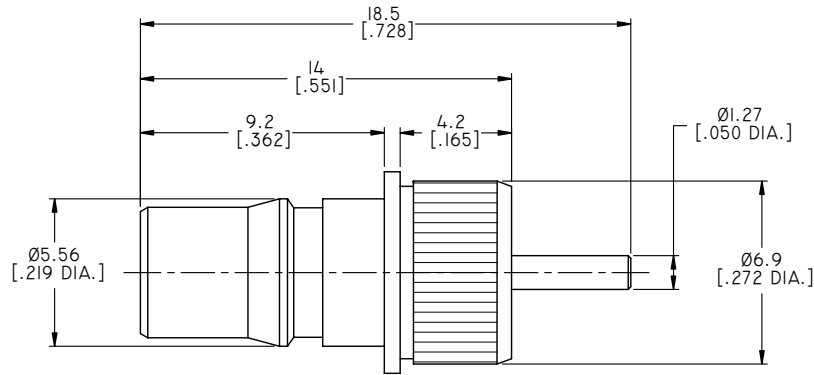
2.0 ELECTRICAL DATA:

- 2.1 IMPEDANCE: 50 Ω
- 2.2 FREQUENCY RANGE: DC~12.4GHZ
- 2.3 VSWR: ≤1.25

3.0 ENVIRONMENTAL DATA:

- 3.1 TEMPERATURE RANGE: -55°C~+155°C
- 3.2 2011/65/EU (RoHS): COMPLIANT

REVISIONS			
REV.	DESCRIPTION	DATE	APPROVED
B	Ø6.90 [.272 DIA.] WAS Ø6.80 [.268 DIA.]	03/20/15	J. QU
C	DRAWING FORMAT CHANGED	09/05/17	J. QU



RECOMMENDED MOUNTING HOLE

DRAWN	L. YANG	DATE	09/05/17
CHECKED	X. B. YANG	DATE	09/05/17
APPROVED	J. QU	DATE	09/05/17
UNLESS OTHERWISE SPECIFIED DIMENSIONS ARE IN MILLIMETERS, DIMENSIONS IN [] ARE IN INCHES FOR CUSTOMER REFERENCE ONLY UNLESS OTHERWISE SPECIFIED TOLERANCE ARE:		THESE DRAWINGS AND SPECIFICATIONS ARE THE PROPERTY OF ANOISON ELECTRONICS LTD AND SHOULD NOT BE USED WITHOUT WRITTEN PERMISSION COPYRIGHT © 2017 ANOISON ELECTRONICS LTD	
.XX	±0.13 [.005"]		
.X	±0.20 [.008"]		
X	±0.50 [.019"]		
.X°	±1°		
X°	±2°		



TITLE
QMA STRAIGHT FEMALE, PANEL MOUNT PRESS FIT

VIEW	PART NO. ANO 2612-6023		
	SIZE A3	SCALE 5:1	SHEET 1/1
	REV. C		