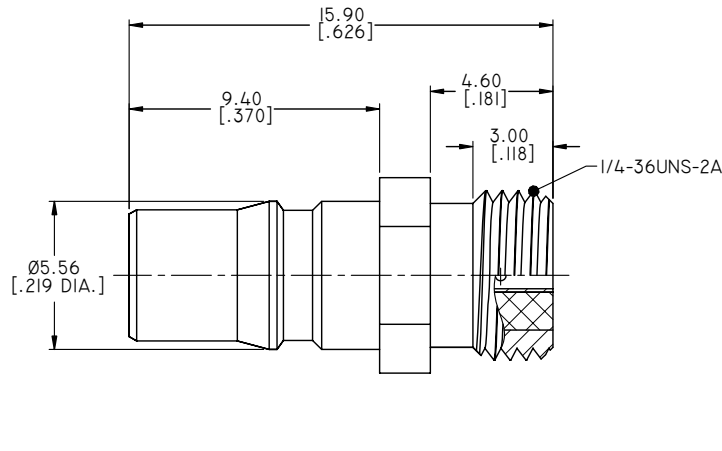


1.0 MATERIAL & FINISH:  
 1.1 BODY: BRASS, SEE TABLE  
 1.2 CENTER CONTACT: BERYLLIUM COPPER ALLOY, GOLD PLATED  
 1.3 INSULATOR: PTFE

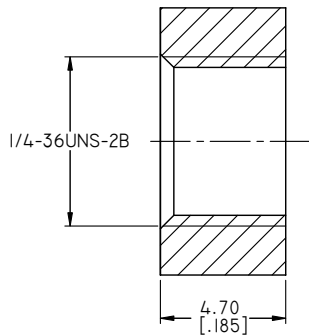
2.0 ELECTRICAL DATA:  
 2.1 IMPEDANCE: 50 Ω  
 2.2 FREQUENCY RANGE: DC-18GHZ

3.0 ENVIRONMENTAL DATA:  
 3.1 TEMPERATURE RANGE: -55°C~+155°C  
 3.2 2011/65/EU ( RoHS): COMPLIANT

REVISIONS			
REV.	DESCRIPTION	DATE	APPROVED
D	PAINT CHANGED	07/02/12	J. QU
E	DRAWING FORMAT CHANGED	08/28/17	J. QU



PART NUMBER	PART	FINISH
ANO 2612-5005		ALBALOY
ANO 2612-5005-1	BODY	GOLD





RECOMMENDED MOUNTING HOLE

DRAWN	L. YANG	DATE	08/28/17
CHECKED	X. B. YANG	DATE	08/28/17
APPROVED	J. QU	DATE	08/28/17
UNLESS OTHERWISE SPECIFIED DIMENSIONS ARE IN MILLIMETERS, DIMENSIONS IN [ ] ARE IN INCHES FOR CUSTOMER REFERENCE ONLY UNLESS OTHERWISE SPECIFIED TOLERANCE ARE:		THESE DRAWINGS AND SPECIFICATIONS ARE THE PROPERTY OF ANOISON ELECTRONICS LTD AND SHOULD NOT BE USED WITHOUT WRITTEN PERMISSION COPYRIGHT © 2017 ANOISON ELECTRONICS LTD	
.XX	±0.13 [.005"]		
.X	±0.20 [.008"]		
X	±0.50 [.019"]		
.X°	±1°		
X°	±2°		



TITLE  
**QMA STRAIGHT FEMALE SOLDERLESS PANEL MOUNT SCREW ON**

VIEW	PART NO. ANO 2612-5005			
 	SIZE A3	SCALE 5:1	SHEET 1/1	REV. E