

MATERIAL & FINISH

- 1 BODY: BRASS, SEE TABLE
- 2 CENTER CONTACT: BERYLLIUM COPPER ALLOY, GOLD PLATED
- 3 INSULATOR: PTFE
- 4 WASHER: PHOSPHOR BRONZE, SEE TABLE
- 5 FASTENING NUT: BRASS, SEE TABLE
- 6 O-RING: SILICONE RUBBER

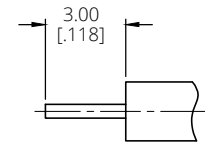
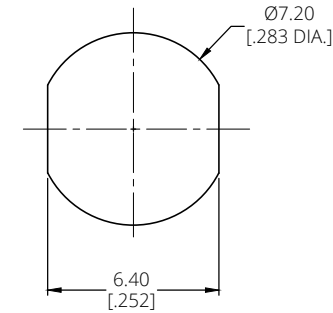
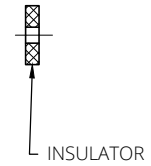
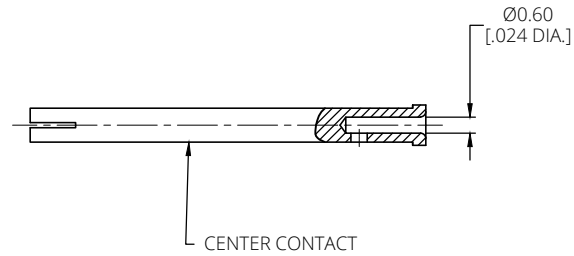
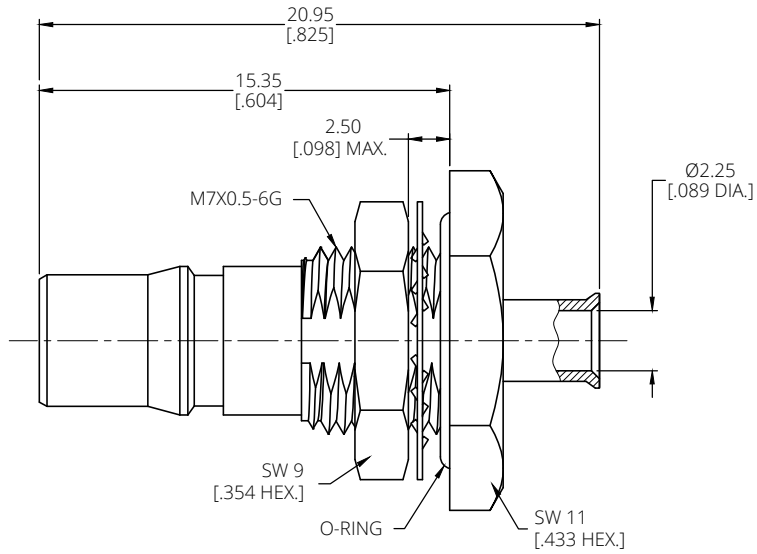
ELECTRICAL SPECIFICATIONS:

- 1 IMPEDANCE: 50 Ω
- 2 FREQUENCY RANGE: DC~18GHz
- 3 VSWR: 1.25 MAX. @ DC~6GHz

ENVIRONMENTAL DATA:

- 1 TEMPERATURE RANGE: -55°C~+125°C
- 2 2011/65/EU(RoHS) AND 2015/863/(RoHS): COMPLIANT
- 3 1907/2006/EC(REACH): COMPLIANT

REVISIONS			
REV.	DESCRIPTION	DATE	APPROVED
F	PART NO. CHANGED	10/07/14	J. Q
G	DRAWING FORMAT CHANGED	09/06/17	J. Q
H	ADD ANO 2612-1030-2	09/19/25	J. Q



TABLE

PART NO.	PART	FINISH	MATERIAL
ANO 2612-1030	WASHER	ALBALOY	PHOSPHOR BRONZE
	BODY/FASTENING NUT		BRASS
ANO 2612-1030-1	WASHER	GOLD	PHOSPHOR BRONZE
	BODY/FASTENING NUT		BRASS
ANO 2612-1030-2	WASHER	ALBALOY	PHOSPHOR BRONZE
	FASTENING NUT	PASSIVATED	STAINLESS STEEL
	BODY		

RECOMMENDED MOUNTING HOLE

CABLE STRIPPING DIMENSIONS

DRAWN	Y. H	DATE	09/19/25
CHECKED	L. Y	DATE	09/19/25
APPROVED	J. Q	DATE	09/19/25
UNLESS OTHERWISE SPECIFIED DIMENSIONS ARE IN MILLIMETERS, DIMENSIONS IN [] ARE IN INCHES FOR CUSTOMER REFERENCE ONLY UNLESS OTHERWISE SPECIFIED TOLERANCE ARE:		THESE DRAWINGS AND SPECIFICATIONS ARE THE PROPERTY OF ANOISON ELECTRONICS LTD AND SHOULD NOT BE USED WITHOUT WRITTEN PERMISSION COPYRIGHT © 2025 ANOISON ELECTRONICS LTD	
.XX	±0.13 [005"]		
.X	±0.20 [008"]		
X	±0.50 [019"]		
.X°	±1°		
X°	±2°		

TITLE
QMA STRAIGHT FEMALE BULKHEAD SOLDER FOR .086/RG405 CABLE

VIEW

PART NO.
ANO 2612-1030

SIZE A3	SCALE 5:1	SHEET 1/1	REV. H
------------	--------------	--------------	-----------