

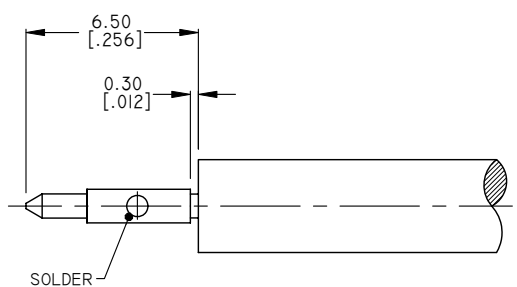
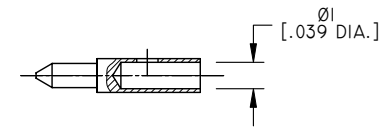
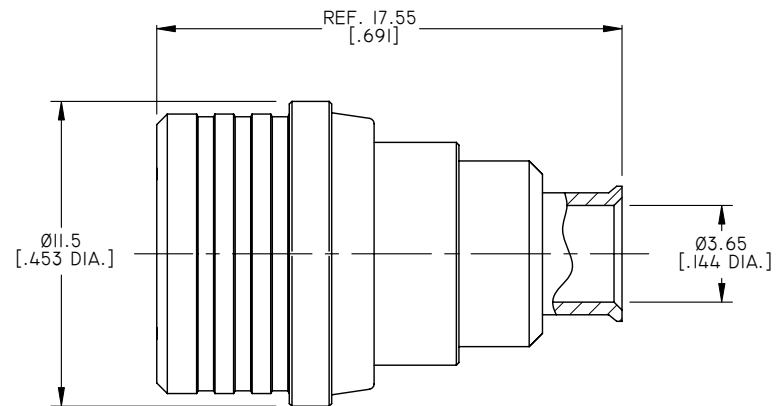
1.0 MATERIAL & FINISH:
 1.1 BODY: BRASS, ALBALOY PLATED
 1.2 CENTER CONTACT: BRASS, GOLD PLATED
 1.3 UNLOCK SLEEVE: BRASS, ALBALOY PLATED
 1.4 INSULATOR: PTFE

2.0 ENVIRONMENTAL DATA:
 2.1 TEMPERATURE RANGE: -55°C~+125°C
 2.2 2011/65/EU (RoHS): COMPLIANT

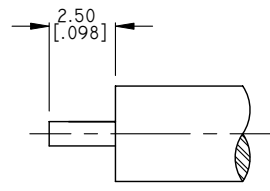
3.0 ELECTRICAL DATA:
 3.1 IMPEDANCE: 50 Ω
 3.2 FREQUENCY RANGE: DC~18 GHz
 3.3 VSWR: 1.25 MAX. @ DC~6GHz

4.0 MECHANICAL DATA:
 4.1 IP RATING: IP68 (INTERFACE MATED)

REVISIONS			
REV.	DESCRIPTION	DATE	APPROVED
A	INITIAL RELEASE	03/12/16	J. QU



CABLE ASSEMBLY DIMENSIONS



CABLE STRIPPING DIMENSIONS

DRAWN	L. YANG	DATE	03/12/16
CHECKED	X. B. YANG	DATE	03/12/16
APPROVED	J. QU	DATE	03/12/16
UNLESS OTHERWISE SPECIFIED DIMENSIONS ARE IN MILLINMETERS. DIMENSIONS IN [] ARE IN INCHES FOR CUSTOMER REFERENCE ONLY UNLESS OTHERWISE SPECIFIED TOLERANCE ARE:		THESE DRAWINGS AND SPECIFICATIONS ARE THE PROPERTY OF ANOISON ELECTRONICS LTD AND SHOULD NOT BE USED WITHOUT WRITTEN PERMISSION COPYRIGHT © 2016 ANOISON ELECTRONICS LTD	
.XX	±0.13 [.005"]		
.X	±0.20 [.008"]		
X	±0.50 [.019"]		
.X°	±1°		
X°	±2°		



TITLE			
QMA STRAIGHT MALE SOLDER FOR .141 CABLE			
VIEW		PART NO.	
		ANO 2611-2102	
SIZE	SCALE	SHEET	REV.
A3	5:1	1/1	A