

1.0 MATERIAL & FINISH:

- 1.1 BODY: BRASS, ALBALOY PLATED
- 1.2 CENTER CONTACT: BRASS, GOLD PLATED
- 1.3 INSULATOR: PTFE
- 1.4 UNLOCK SEEVE: BRASS, ALBALOY PLATED

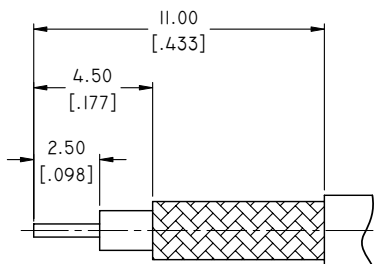
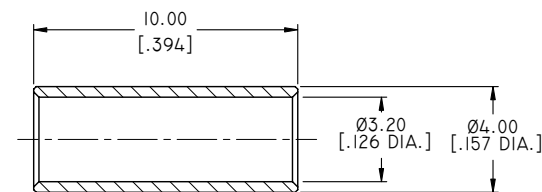
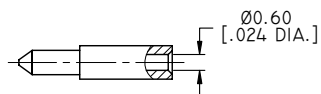
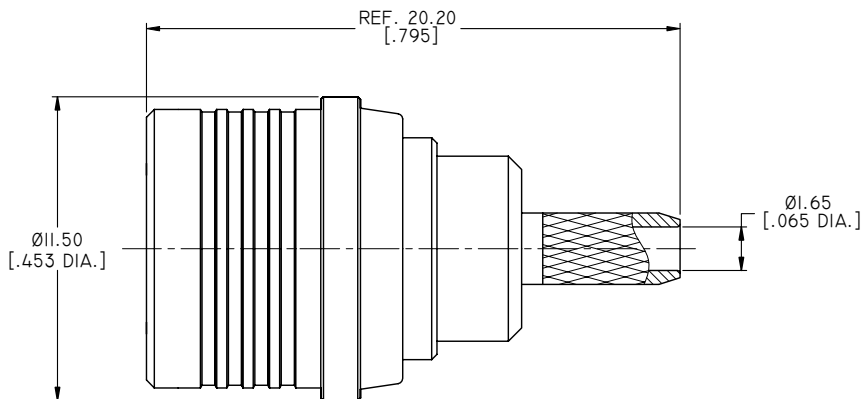
2.0 ELECTRICAL DATA:

- 2.1 IMPEDANCE: 50 Ω
- 2.2 FREQUENCY RANGE: DC~6GHZ

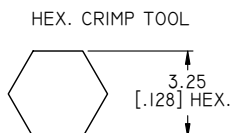
3.0 ENVIRONMENTAL DATA:

- 3.1 TEMPERATURE RANGE: -55°C~+155°C
- 3.2 2011/65/EU (RoHS): COMPLIANT

REVISIONS			
REV.	DESCRIPTION	DATE	APPROVED
D	STRUCTURE CHANGED	08/07/13	J. QU
E	DRAWING FORMAT CHANGED	08/10/17	J. QU



CABLE STRIPPING DIMENSIONS



CRIMP WIDTH:7.5 [.295]

DRAWN	L. YANG	DATE	08/10/17
CHECKED	X. B. YANG	DATE	08/10/17
APPROVED	J. QU	DATE	08/10/17
UNLESS OTHERWISE SPECIFIED DIMENSIONS ARE IN MILLIMETERS, DIMENSIONS IN [] ARE IN INCHES FOR CUSTOMER REFERENCE ONLY UNLESS OTHERWISE SPECIFIED TOLERANCE ARE:		THESE DRAWINGS AND SPECIFICATIONS ARE THE PROPERTY OF ANOISON ELECTRONICS LTD AND SHOULD NOT BE USED WITHOUT WRITTEN PERMISSION COPYRIGHT © 2017 ANOISON ELECTRONICS LTD	
.XX	±0.13 [.005"]		
.X	±0.20 [.008"]		
X	±0.50 [.019"]		
.X°	±1°		
X°	±2°		



TITLE
QMA STRAIGHT MALE CRIMP FOR RG316/RG174/LMRI00

VIEW	PART NO. ANO 2611-2002			
	SIZE A3	SCALE 5:1	SHEET 1/1	REV. E