

4

3

2

1

MATERIAL & FINISH

- 1. BODY: BRASS, ALBALOY PLATED
- 2. CENTER CONTACT: BERYLLIUM COPPER ALLOY, GOLD PLATED
- 3. INSULATOR: PTFE
- 4. UNLOCK SEEVE: BRASS, NICKEL PLATED

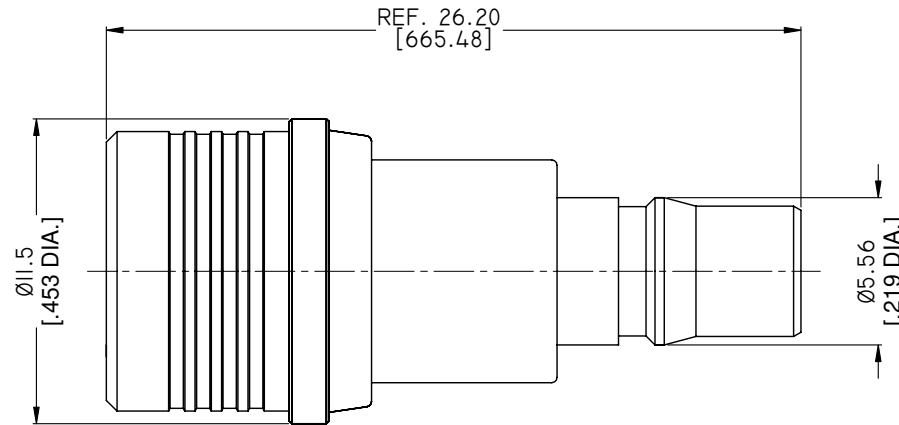
ENVIRONMENTAL DATA:

- 1. TEMPERATURE RANGE: -55°C~+125°C
- 2. 2011/65/EU (RoHS): COMPLIANT

ELECTRICAL SPECIFICATIONS:

- 1. IMPEDANCE: 50 Ω
- 2. FREQUENCY RANGE: DC~18GHZ
- 3. VSWR: ≤1.15 AT DC~6GHZ

REVISIONS			
REV.	DESCRIPTION	DATE	APPROVED
A	INITIAL RELEASE	07/24/12	J. QU



DRAWN	X. B. YANG	DATE	07/24/12
CHECKED	L. YANG	DATE	07/24/12
APPROVED	J. QU	DATE	07/24/12
UNLESS OTHERWISE SPECIFIED DIMENSIONS ARE IN MILLINMETERS, DIMENSIONS IN [] ARE IN INCHES FOR CUSTOMER REFERENCE ONLY UNLESS OTHERWISE SPECIFIED TOLERANCE ARE:		THESE DRAWINGS AND SPECIFICATIONS ARE THE PROPERTY OF ANOISON ELECTRONICS LTD AND SHOULD NOT BE USED WITHOUT WRITTEN PERMISSION COPYRIGHT © 2015 ANOISON ELECTRONICS LTD	
.XX	±0.13 [.005"]		
.X	±0.20 [.008"]		
X	±0.50 [.019"]		
.X°	±1°		
X°	±2°		



TITLE			
ADAPTER, QMA MALE TO QMA FEMALE			
VIEW	PART NO.		
	ANO 261-262-1028		
SIZE	SCALE	SHEET	REV.
A3	5:1	1/1	A

4

3

2

1