

4

3

2

1

MATERIAL & FINISH

- 1. BODY: BRASS, SEE SCHEDULE
- 2. CENTER CONTACT: BRASS, GOLD PLATED
- 3. INSULATOR: PTFE
- 4. UNLOCK SEEVE: BRASS, ALBALOY PLATED

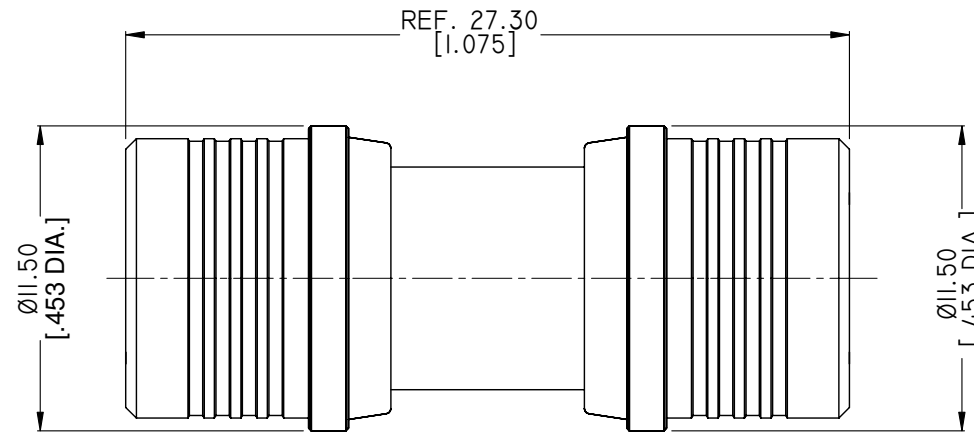
ENVIRONMENTAL DATA:

- 1. TEMPERATURE RANGE: -55°C~+125°C
- 2. 2011/65/EU (RoHS): COMPLIANT

ELECTRICAL SPECIFICATIONS:

- 1. IMPEDANCE: 50 Ω
- 2. FREQUENCY RANGE: DC~18GHZ
- 3. VSWR: ≤1.20 AT DC~6GHZ

REVISIONS			
REV.	DESCRIPTION	DATE	APPROVED
A	INITIAL RELEASE	07/24/12	J. QU
B	PART NO. CHANGED	03/20/15	J. QU



PART NO.	PART	FINISH
ANO 261-261-I026	BODY	ALBALOY
ANO 261-261-I026-I		GOLD

DRAWN	X. B. YANG	DATE	03/20/15
CHECKED	L. YANG	DATE	03/20/15
APPROVED	J. QU	DATE	03/20/15
UNLESS OTHERWISE SPECIFIED DIMENSIONS ARE IN MILLINMETERS. DIMENSIONS IN [] ARE IN INCHES FOR CUSTOMER REFERENCE ONLY UNLESS OTHERWISE SPECIFIED TOLERANCE ARE:		THESE DRAWINGS AND SPECIFICATIONS ARE THE PROPERTY OF ANOISON ELECTRONICS LTD AND SHOULD NOT BE USED WITHOUT WRITTEN PERMISSION COPYRIGHT © 2015 ANOISON ELECTRONICS LTD	
.XX	±0.13 [.005"]		
.X	±0.20 [.008"]		
X	±0.50 [.019"]		
.X°	±1°		
X°	±2°		



TITLE			
ADAPTER, QMA MALE TO QMA MALE			
VIEW	PART NO. ANO 261-261-I026		
	SIZE A3	SCALE 5:1	SHEET 1/1
			REV. B

4

3

2

1