

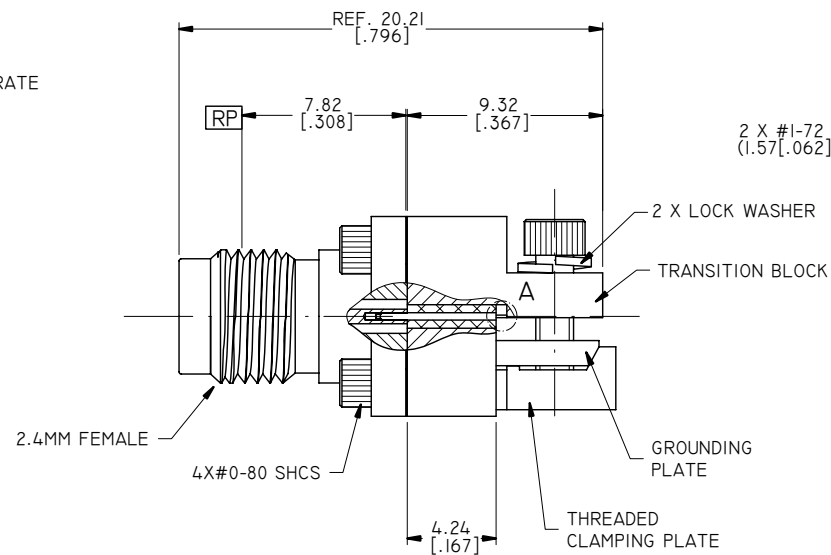
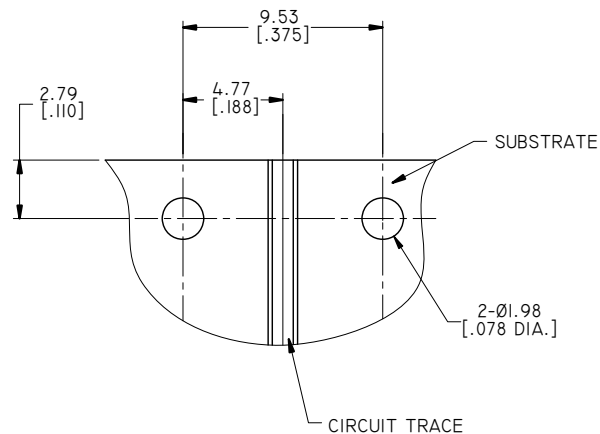
4

3

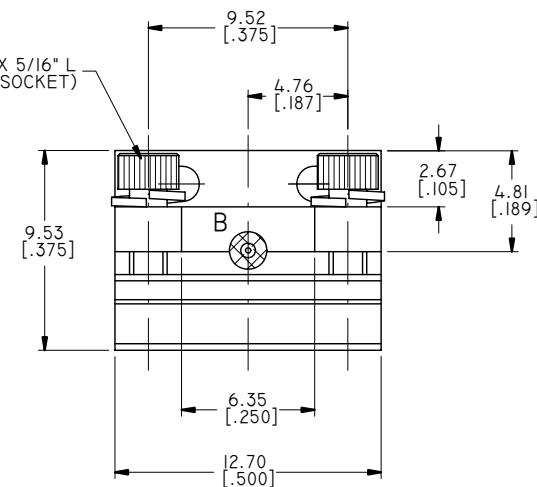
2

1

REVISIONS			
REV.	DESCRIPTION	DATE	APPROVED
A	INITIAL RELEASE	09/09/16	J. QU



2 X #1-72 SHCS X 5/16" L
(1.57 [.062] HEX. SOCKET)



2.4MM CONNECTOR

1. BODY: STAINLESS STEEL, PASSIVATED
2. CENTER CONTACT: BERYLLIUM COPPER ALLOY, GOLD PLATED
3. INSULATOR: PEI

TRANSITION BLOCK

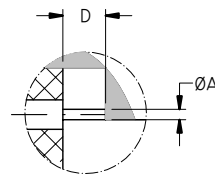
1. TRANSITION BLOCK: BRASS, NICKEL PLATED
2. GROUNDING PLATE: BRASS, NICKEL PLATED
3. THREADED CLAMPING PLATE: BRASS, NICKEL PLATED
4. LAUNCH PIN: BERYLLIUM COPPER ALLOY, GOLD PLATED
5. TRANSITION BLOCK DIELECTRIC: PTFE

ENVIRONMENTAL DATA:

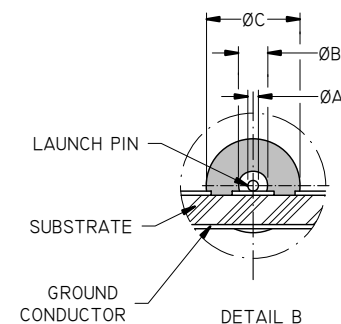
1. TEMPERATURE RANGE: -55°C~+125°C
2. 2011/65/EU (RoHS): COMPLIANT

ELECTRICAL SPECIFICATIONS:

1. IMPEDANCE: 50 Ω
2. FREQUENCY RANGE: DC~50 GHZ



DETAIL A



DETAIL B

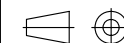
PART NO.	Ø A	Ø B	Ø C	D
ANO 222-A1-L	0.13 [.005]	0.23 [.009]	0.74 [.0290]	0.76 [.030]
ANO 222-A2-L	0.18 [.007]	0.31 [.012]	0.99 [.0390]	0.76 [.030]
ANO 222-A3-L	0.18 [.007]	0.38 [.015]	1.22 [.0480]	0.76 [.030]
ANO 222-A4-L	0.25 [.010]	0.51 [.020]	1.61 [.0635]	1.27 [.050]

DRAWN	L. YANG	DATE	09/09/16
CHECKED	X. B. YANG	DATE	09/09/16
APPROVED	J. QU	DATE	09/09/16
UNLESS OTHERWISE SPECIFIED DIMENSIONS ARE IN MILLINETERS, DIMENSIONS IN [] ARE IN INCHES FOR CUSTOMER REFERENCE ONLY UNLESS OTHERWISE SPECIFIED TOLERANCE ARE:		THESE DRAWINGS AND SPECIFICATIONS ARE THE PROPERTY OF ANOISON ELECTRONICS LTD AND SHOULD NOT BE USED WITHOUT WRITTEN PERMISSION COPYRIGHT © 2016 ANOISON ELECTRONICS LTD	
.XX	±0.13 [.005"]		
.X	±0.20 [.008"]		
X	±0.50 [.019"]		
.X°	±1°		
X°	±2°		

ANOISON
...we create connection for technologies

TITLE
2.4MM FEMALE END LAUNCH CONNECTOR
LOW PROFILE

VIEW



PART NO.

ANO 222-AX-L

SIZE

A3

SCALE

4:1

SHEET

1/1

REV.

A

4

3

2

1