

MATERIAL & FINISH:

- 1 BODY: BRASS, NICKEL PLATE
- 2 CENTER CONTACT: BERYLLIUM COPPER ALLOY, GOLD PLATED
- 3 INSULATOR: PTFE & PEI
- 4 SPRING WASHER: STAINLESS STEEL
- 5 SCREW: STEEL

ENVIRONMENTAL DATA:

- 1 TEMPERATURE RANGE: -55°C~+125°C
- 2 2011/65/EU(RoHS) AND 2015/863/(RoHS): COMPLIANT
- 3 1999/2006/EC(REACH): COMPLIANT

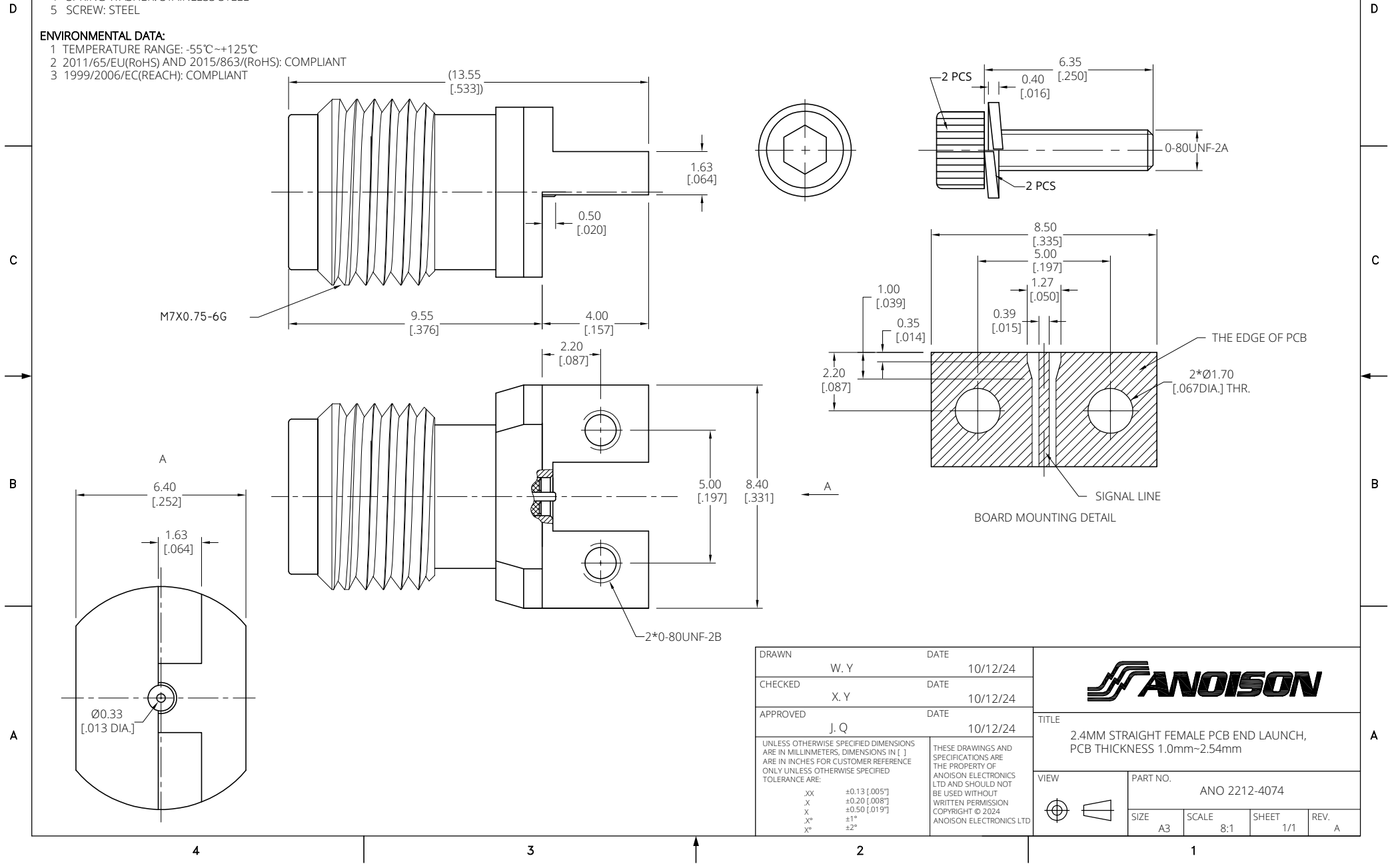
ELECTRICAL DATA:

- 1 IMPEDANCE: 50 Ω
- 2 FREQUENCY RANGE: DC~40 GHz
- 3 VSWR: 1.30 MAX.

NOTES:

- 1 0-80UNF-2A SCREW TIGHTENING TORQUE IS 0.09N.M
- 2 RECOMMENDED PCB THICKNESS IS 1.0MM~2.54MM

REVISIONS			
REV.	DESCRIPTION	DATE	APPROVED
A	INITIAL RELEASE	10/12/24	J. Q



DRAWN	W. Y	DATE	10/12/24
CHECKED	X. Y	DATE	10/12/24
APPROVED	J. Q	DATE	10/12/24
UNLESS OTHERWISE SPECIFIED DIMENSIONS ARE IN MILLIMETERS, DIMENSIONS IN [] ARE IN INCHES FOR CUSTOMER REFERENCE ONLY UNLESS OTHERWISE SPECIFIED TOLERANCE ARE:		THESE DRAWINGS AND SPECIFICATIONS ARE THE PROPERTY OF ANOISON ELECTRONICS LTD AND SHOULD NOT BE USED WITHOUT WRITTEN PERMISSION COPYRIGHT © 2024 ANOISON ELECTRONICS LTD	
XX	±0.13 [005"]		
X	±0.20 [008"]		
X*	±0.50 [019"]		
X**	±1"		
X***	±2"		

ANOISON

TITLE
2.4MM STRAIGHT FEMALE PCB END LAUNCH,
PCB THICKNESS 1.0mm~2.54mm

VIEW

PART NO.
ANO 2212-4074

SIZE A3	SCALE 8:1	SHEET 1/1	REV. A
-------------------	---------------------	---------------------	------------------