

MATERIAL & FINISH:

- 1 BODY: STAINLESS STEEL, PASSIVATEDL
- 2 CENTER CONTACT: BERYLLIUM COPPER ALLOY, GOLD PLATED
- 3 INSULATOR: PEI

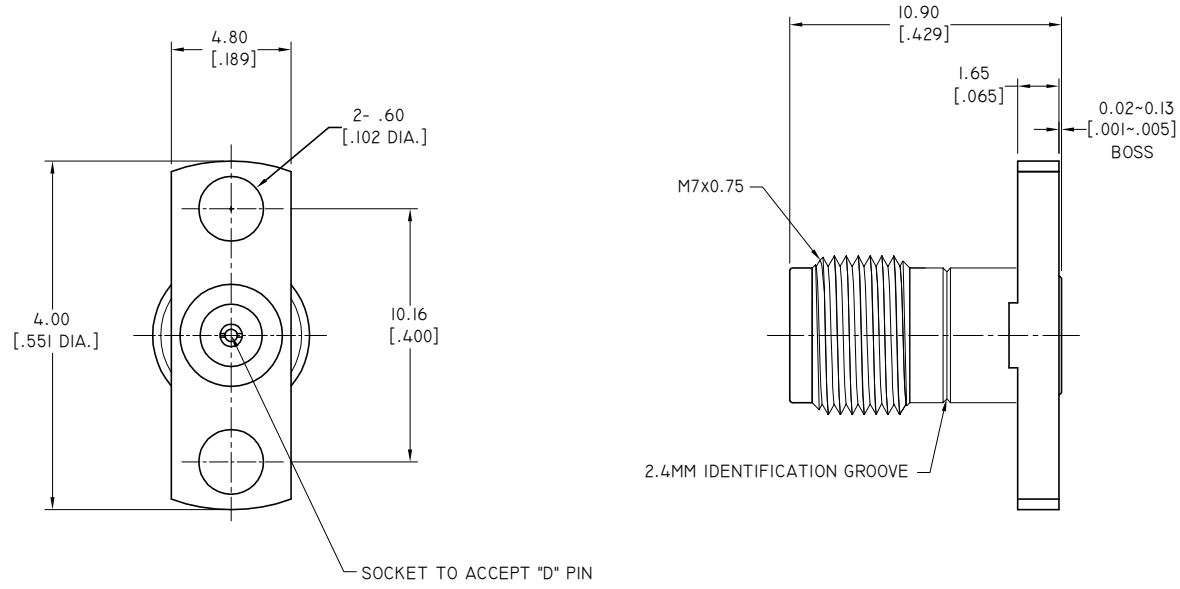
ENVIRONMENTAL DATA:

- 1 TEMPERATURE RANGE: -55 °C~+125 °C
- 2 2011/65/EU (RoHS): COMPLIANT

ELECTRICAL DATA:

- 1 IMPEDANCE: 50 Ω
- 2 FREQUENCY RANGE: DC-50 GHZ
- 3 VSWR: 1.10 MAX. AT DC-18 GHZ
1.15 MAX. AT 18-40 GHZ
1.18 MAX. AT 40-50 GHZ

REVISIONS			
REV.	DESCRIPTION	DATE	APPROVED
A	INITIAL RELEASE	07/29/14	J. QU
B	2.4MM IDENTIFICATION GROOVE AND PART NO. ADDED	04/25/16	J. QU
C	CHANGED THE APPEARANCE	05/09/20	J. QU



PART NO.	D	PIN DEPTH MAX.
ANO 2212-3006-1	.23 [.009 DIA.]	1.65 [.065]
ANO 2212-3006-2	.30 [.012 DIA.]	2.16 [.085]
ANO 2212-3006-3	.51 [.020 DIA.]	1.65 [.065]
ANO 2212-3006-4	.38 [.015 DIA.]	2.00 [.079]
ANO 2212-3006-5	.46 [.018 DIA.]	2.00 [.079]

DRAWN	L. YANG	DATE	05/09/20	
CHECKED	X. B. YANG	DATE	05/09/20	
APPROVED	J. QU	DATE	05/09/20	
UNLESS OTHERWISE SPECIFIED DIMENSIONS ARE IN MILLIMETERS, DIMENSIONS IN [] ARE IN INCHES FOR CUSTOMER REFERENCE ONLY UNLESS OTHERWISE SPECIFIED TOLERANCE ARE:		THESE DRAWINGS AND SPECIFICATIONS ARE THE PROPERTY OF ANOISON ELECTRONICS LTD AND SHOULD NOT BE USED WITHOUT WRITTEN PERMISSION COPYRIGHT © 2020 ANOISON ELECTRONICS LTD		TITLE
.XX .13 [.005"] .X .20 [.008"] X .50 [.019"] .X X				2.4MM FEMALE, 2 HOLE FLANGE, FIELD REPLACEABLE
				VIEW
				PART NO.
				ANO 2212-3006
		SIZE	SCALE	SHEET
		A3	5:1	1/1
				REV.
				C