

MATERIAL & FINISH

- 1 BODY: BRASS, PLATED SEE TABLE
- 2 CENTER CONTACT: BRASS, GOLD PLATED
- 3 FASTENING NUT: BRASS, PLATED SEE TABLE
- 4 INSULATOR: PTFE
- 5 LOCK WASHER: PHOSPHOR BRONZE, PLATED SEE TABLE

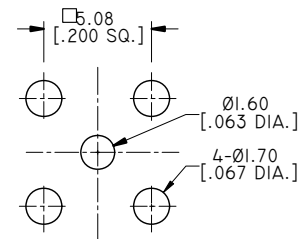
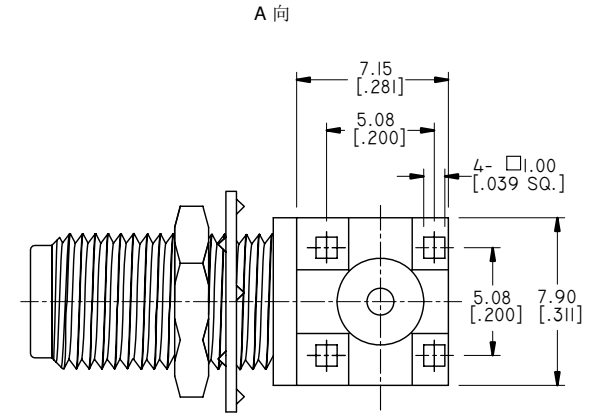
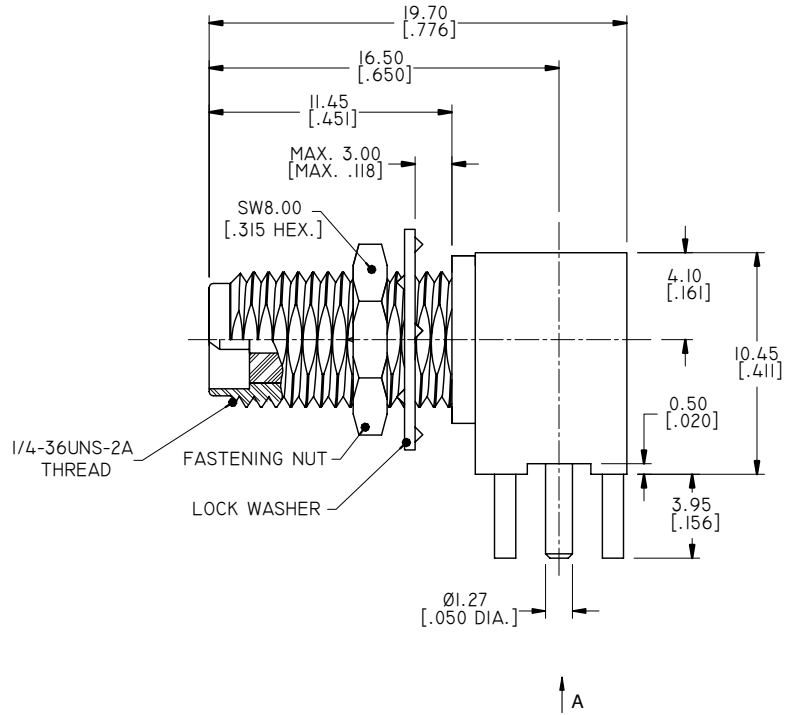
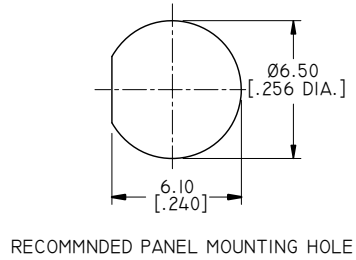
ELECTRICAL DATA:

- 1 IMPEDANCE: 50 OHMS
- 2 FREQUENCY RANGE: DC~6 GHZ

ENVIRONMENTAL DATA:

- 1 TEMPERATURE RANGE: -55°C~+125°C
- 2 2011/65/EU (RoHS): COMPLIANT

REVISIONS			
REV.	DESCRIPTION	DATE	APPROVED
E	PART NUMBER CHANGED	04/02/15	J. QU
F	ADDED TABLE	07/21/17	J. QU



PART NO.	PART	FINISH
ANO 2124-4075		GOLD
ANO 2124-4075-1	BODY/FASTENING NUT/ LOCK WASHER	NICKEL
ANO 2124-4075-2		ALBALOY

DRAWN	P. CHEN	DATE	07/21/17
CHECKED	L. YANG	DATE	07/21/17
APPROVED	J. QU	DATE	07/21/17
UNLESS OTHERWISE SPECIFIED DIMENSIONS ARE IN MILLIMETERS, DIMENSIONS IN [] ARE IN INCHES FOR CUSTOMER REFERENCE ONLY UNLESS OTHERWISE SPECIFIED TOLERANCE ARE:		THESE DRAWINGS AND SPECIFICATIONS ARE THE PROPERTY OF ANOISON ELECTRONICS LTD AND SHOULD NOT BE USED WITHOUT WRITTEN PERMISSION COPYRIGHT © 2017 ANOISON ELECTRONICS LTD	
.XX	±0.13 [0.005"]		
.X	±0.20 [0.008"]		
X	±0.50 [0.019"]		
.X°	±1°		
X°	±2°		

ANOISON
...we create connection for technologies

TITLE: RP SMA RIGHT ANGLE FEMALE BULKHEAD PCB RECEPTACLE

VIEW	PART NO. ANO 2124-4075		
SIZE	SCALE	SHEET	REV.
A3	4:1	1/1	F