

MATERIAL & FINISH:

- 1 BODY: STAINLESS STEEL, PASSIVATED
- 2 CENTER CONTACT: BERYLLIUM COPPER ALLOY, GOLD PLATED
- 3 INSULATOR: PTFE
- 4 PRESS RING: STAINLESS STEEL, PASSIVATED

ENVIRONMENTAL DATA:

- 1 TEMPERATURE RANGE: -65°C~+165°C
- 2 2011/65/EU(RoHS) AND 2015/863/(RoHS): COMPLIANT
- 3 1999/45/EC(REACH): COMPLIANT

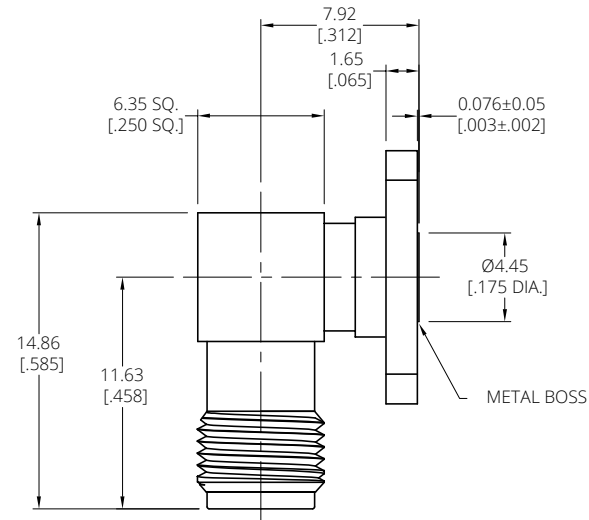
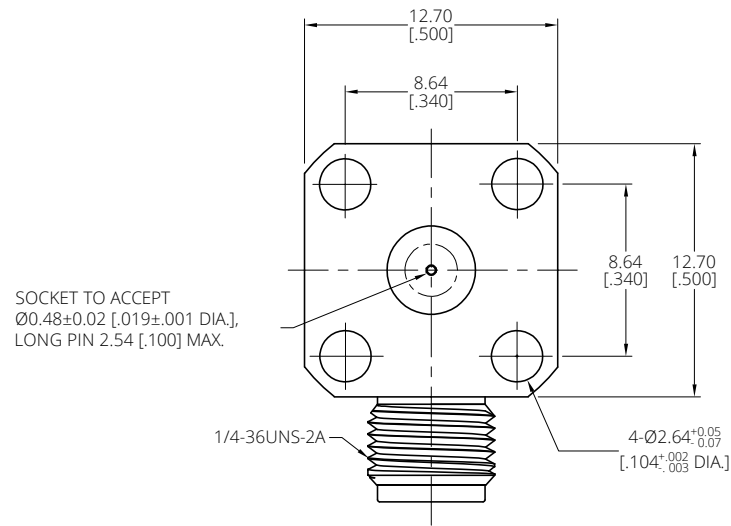
ELECTRICAL DATA:

- 1 IMPEDANCE: 50 Ω
- 2 FREQUENCY RANGE: DC~22 GHz
- 3 VSWR: 1.07+.010 x F GHz
- 4 INSERTION LOSS: 0.04 x √F(GHz) dB MAX
- 5 DIELECTRIC WITHSTANDING VOLTAGE: 750 VRMS MAX.
- 6 INSULATION RESISTANCE: 10000 MΩ MIN.
- 7 CONTACT RESISTANCE:
 CENTER CONTACT: 6 mΩ MAX.
 OUTER CONTACT: 2 mΩ MAX.

MECHANICAL DATA:

- 1 CONNECTOR DURABILITY: 500 MIN. CYCLES

REVISIONS			
REV.	DESCRIPTION	DATE	APPROVED
A	INITIAL RELEASE	06/07/24	J. Q



DRAWN	Y. H	DATE	06/07/24
CHECKED	X. Y	DATE	06/07/24
APPROVED	J. Q	DATE	06/07/24
UNLESS OTHERWISE SPECIFIED DIMENSIONS ARE IN MILLIMETERS, DIMENSIONS IN [] ARE IN INCHES FOR CUSTOMER REFERENCE ONLY UNLESS OTHERWISE SPECIFIED TOLERANCE ARE:		THESE DRAWINGS AND SPECIFICATIONS ARE THE PROPERTY OF ANOISON ELECTRONICS LTD AND SHOULD NOT BE USED WITHOUT WRITTEN PERMISSION COPYRIGHT © 2024 ANOISON ELECTRONICS LTD	
XX	±0.13 [.005"]		
X	±0.20 [.008"]		
X*	±0.50 [.019"]		
X**	±1°		
X***	±2°		

TITLE
 SMA R/A FEMALE, 4 HOLE .50 FLANGE MOUNT PANEL RECEPTACLE .019 DIA.

VIEW

PART NO.
 ANO 2122-3695

SIZE A4	SCALE 4:1	SHEET 1/1	REV. A
------------	--------------	--------------	-----------