

MATERIAL & FINISH:

- 1 BODY: STAINLESS STEEL, PASSIVATED
- 2 CENTER CONTACT: BERYLLIUM COPPER ALLOY, GOLD PLATED
- 3 INSULATOR: PTFE

ENVIRONMENTAL DATA:

- 1 TEMPERATURE RANGE: -55°C~+165°C
- 2 2011/65/EU (RoHS): COMPLIANT

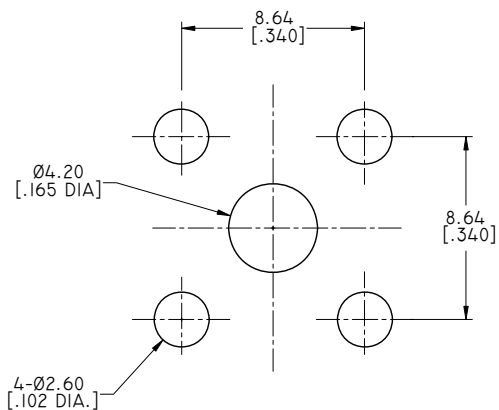
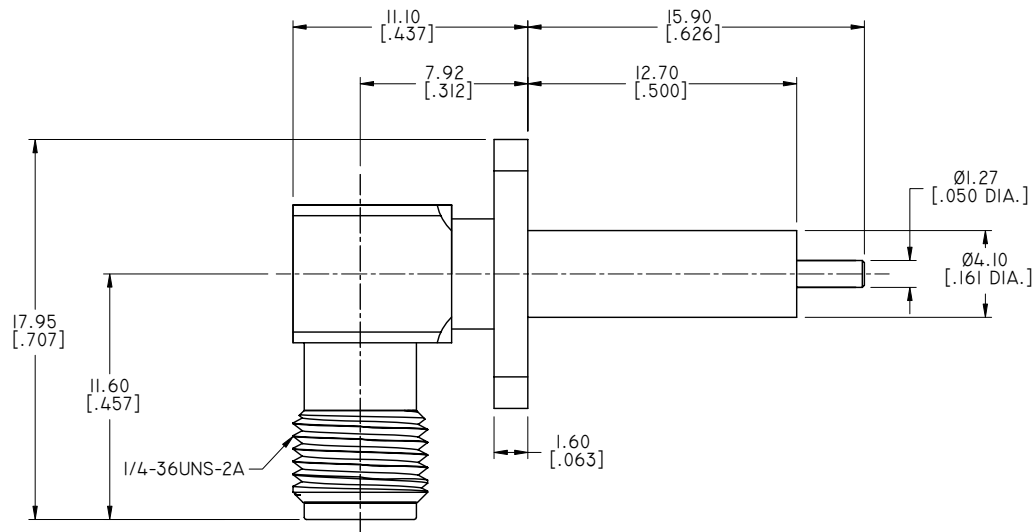
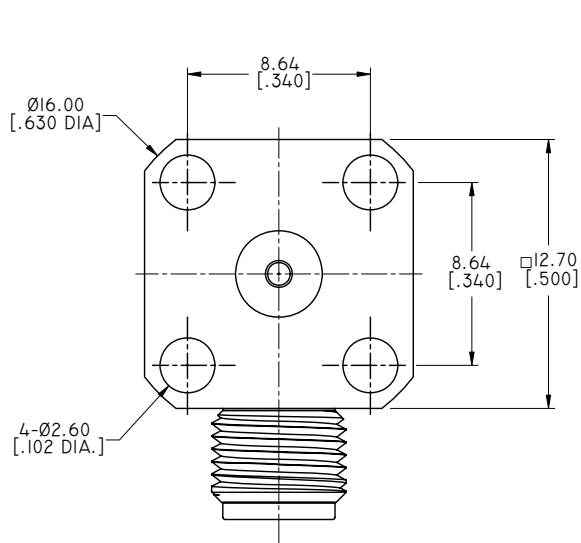
MECHANICAL DATA:

DURABILITY (MATINGS): > 500

ELECTRICAL SPECIFICATIONS:

- 1 IMPEDANCE: 50 Ω
- 2 FREQUENCY RANGE: DC~18GHZ
- 3 DIELECTRIC WITHSTANDING VOLTAGE: 1000 V MIN.
- 4 INSULATION RESISTANCE: 5000 M OHMS MIN.

REVISIONS			
REV.	DESCRIPTION	DATE	APPROVED
A	INITIAL RELEASE	09/13/17	J. QU



RECOMMENDED MOUNTING HOLE

DRAWN	P. CHEN	DATE	09/13/17
CHECKED	X. B. YANG	DATE	09/13/17
APPROVED	J. QU	DATE	09/13/17
UNLESS OTHERWISE SPECIFIED DIMENSIONS ARE IN MILLIMETERS. DIMENSIONS IN [] ARE IN INCHES FOR CUSTOMER REFERENCE ONLY UNLESS OTHERWISE SPECIFIED TOLERANCE ARE:		THESE DRAWINGS AND SPECIFICATIONS ARE THE PROPERTY OF ANOISON ELECTRONICS LTD AND SHOULD NOT BE USED WITHOUT WRITTEN PERMISSION COPYRIGHT © 2017 ANOISON ELECTRONICS LTD	
.XX	±0.13 [.005"]		
.X	±0.20 [.008"]		
X	±0.50 [.019"]		
.X°	±1°		
X°	±2°		



TITLE			
SMA R/A FEMALE, 4 HOLE .500 SQ. FLANGE MOUNT RECEPTACLE			
VIEW		PART NO.	
		ANO 2122-34.74	
SIZE	SCALE	SHEET	REV.
A3	4:1	1/1	A