

MATERIAL & FINISH

1. BODY: BRASS, SEE TABLE
2. CENTER CONTACT: BRASS, GOLD PLATED
3. INSULATOR: PTFE
4. COUPLING NUT: BRASS, SEE TABLE
5. GASKET: SILICONE RUBBER

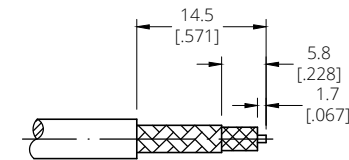
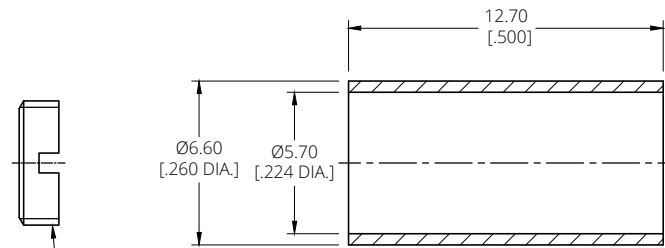
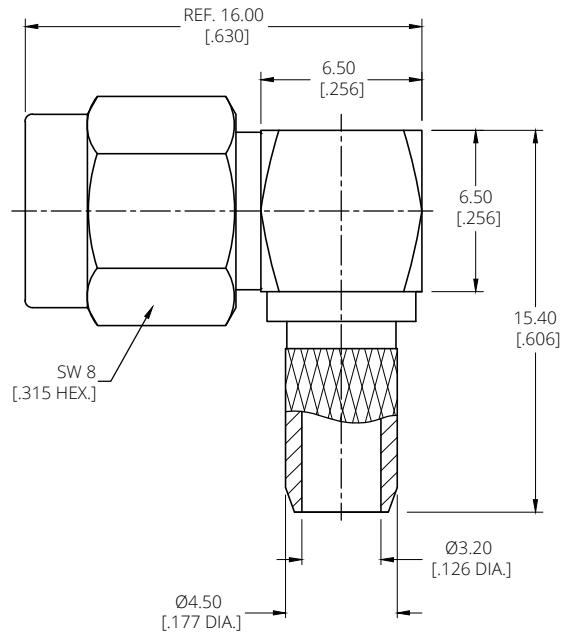
ELECTRICAL DATA:

1. IMPEDANCE: 50 Ω
2. FREQUENCY RANGE: DC~12.4 GHz

ENVIRONMENTAL DATA:

1. TEMPERATURE RANGE: -55°C~+125°C
2. 2011/65/EU (RoHS): COMPLIANT
3. 1907/2006/EC(REACH): COMPLIANT

REVISIONS			
REV.	DESCRIPTION	DATE	APPROVED
A	INITIAL RELEASE	08/18/10	J. Q
C	FINISH CHANGED	02/09/18	J. Q
D	ADD FINISH	01/17/25	J. Q



CABLE STRIPPING DIMENSIONS

PART	MATERIAL	FINISH	PART NUMBER
BODY	BRASS	NICKEL	ANO 2121-2157
COUPLING NUT	BRASS	NICKEL	
BODY	BRASS	GOLD	ANO 2121-2157-1
COUPLING NUT	BRASS	GOLD	

DRAWN	Y. H	DATE	01/17/25
CHECKED	L. Y	DATE	01/17/25
APPROVED	J. Q	DATE	01/17/25
UNLESS OTHERWISE SPECIFIED DIMENSIONS ARE IN MILLIMETERS, DIMENSIONS IN [] ARE IN INCHES FOR CUSTOMER REFERENCE ONLY UNLESS OTHERWISE SPECIFIED TOLERANCE ARE:		THESE DRAWINGS AND SPECIFICATIONS ARE THE PROPERTY OF ANOISON ELECTRONICS LTD AND SHOULD NOT BE USED WITHOUT WRITTEN PERMISSION COPYRIGHT © 2025 ANOISON ELECTRONICS LTD	
XX	±0.13 [.005"]		
X	±0.20 [.008"]		
X	±0.50 [.019"]		
X°	±1°		
X°	±2°		



TITLE			
SMA RIGHT ANGLE MALE CRIMP FOR RG142 CABLE			
VIEW		PART NO.	
		ANO 2121-2157	
SIZE	SCALE	SHEET	REV.
A3	5:1	1/1	D