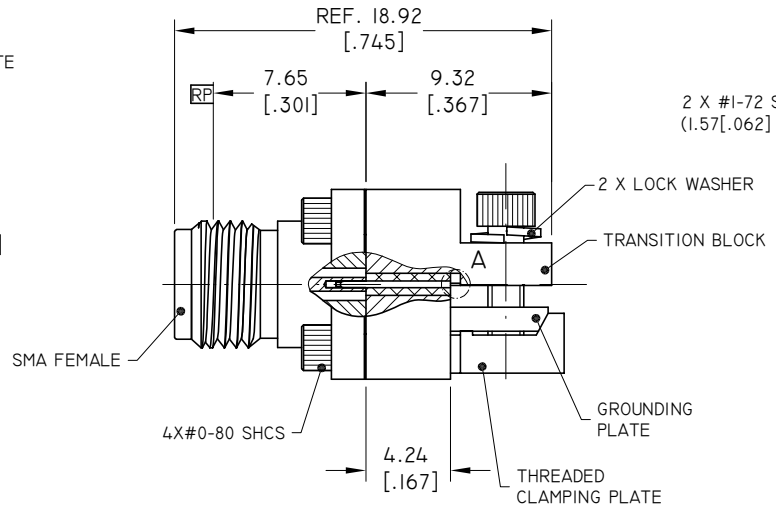
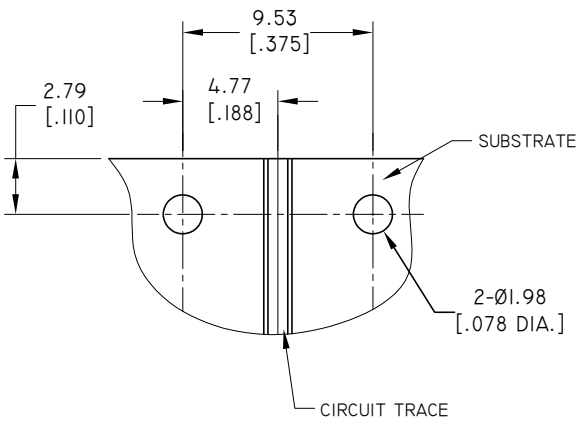
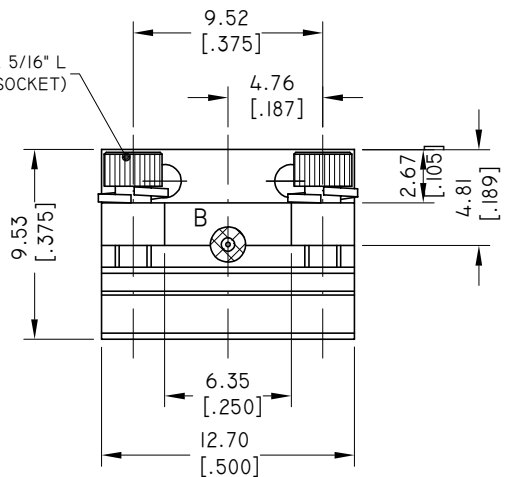


REVISIONS			
REV.	DESCRIPTION	DATE	APPROVED
A	INITIAL RELEASE	08/01/15	J. QU



2 X #1-72 SHCS X 5/16" L
(1.57 [.062] HEX. SOCKET)



1.0 SMA CONNECTOR

- 1.1 BODY: STAINLESS STEEL, PASSIVATED
- 1.2 CENTER CONTACT: BERYLLIUM COPPER ALLOY GOLD PLATED
- 1.3 INSULATOR: PTFE
- 1.4 CAPTURE BEAD: PEI

2.0 TRANSITION BLOCK

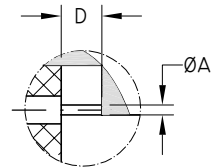
- 2.1 TRANSITION BLOCK: BRASS, NICKEL PLATED
- 2.2 GROUNDING PLATE: BRASS, NICKEL PLATED
- 2.3 THREADED CLAMPING PLATE: BRASS, NICKEL PLATED
- 2.4 LAUNCH PIN: BERYLLIUM COPPER ALLOY, GOLD PLATED
- 2.5 TRANSITION BLOCK DIELECTRIC: PTFE

3.0 ENVIRONMENTAL DATA:

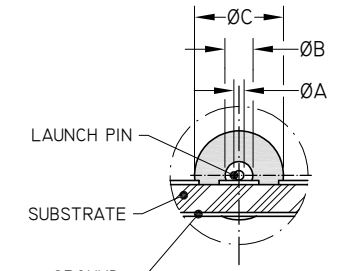
- 3.1 TEMPERATURE RANGE: -55°C~+125°C
- 3.2 2011/65/EU (RoHS): COMPLIANT

4.0 ELECTRICAL SPECIFICATIONS:

- 4.1 IMPEDANCE: 50 Ω
- 4.2 FREQUENCY RANGE: DC~26.5 GHz



DETAIL A



DETAIL B

PART NO.	Ø A	Ø B	Ø C	D
ANO 212-A1-L	0.13 [.005]	0.23 [.009]	0.74 [.0290]	0.76 [.030]
ANO 212-A2-L	0.18 [.007]	0.31 [.012]	0.99 [.0390]	0.76 [.030]
ANO 212-A3-L	0.18 [.007]	0.38 [.015]	1.22 [.0480]	0.76 [.030]
ANO 212-A4-L	0.25 [.010]	0.51 [.020]	1.61 [.0635]	1.27 [.050]

DRAWN	L. YANG	DATE	08/01/15
CHECKED	X. B. YANG	DATE	08/01/15
APPROVED	J. QU	DATE	08/01/15
UNLESS OTHERWISE SPECIFIED DIMENSIONS ARE IN MILLIMETERS, DIMENSIONS IN [] ARE IN INCHES FOR CUSTOMER REFERENCE ONLY UNLESS OTHERWISE SPECIFIED TOLERANCE ARE:		THESE DRAWINGS AND SPECIFICATIONS ARE THE PROPERTY OF ANOISON ELECTRONICS LTD AND SHOULD NOT BE USED WITHOUT WRITTEN PERMISSION COPYRIGHT © 2015 ANOISON ELECTRONICS LTD	
.XX	±0.13 [.005"]		
.X	±0.20 [.008"]		
X	±0.50 [.019"]		
X°	±1°		
X°	±2°		



TITLE
SMA FEMALE END LAUNCH CONNECTOR
LOW PROFILE

VIEW	PART NO. ANO 212-AX-L			
	SIZE A3	SCALE 4:1	SHEET 1/1	REV. A