

4

3

2

1

MATERIAL & FINISH:

- 1 BODY: SEE TABLE
- 2 CENTER CONTACT: BERYLLIUM COPPER ALLOY, GOLD PLATED
- 3 INSULATOR: PTFE

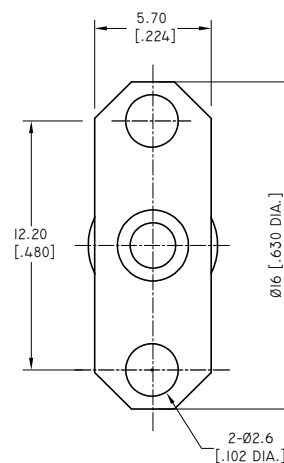
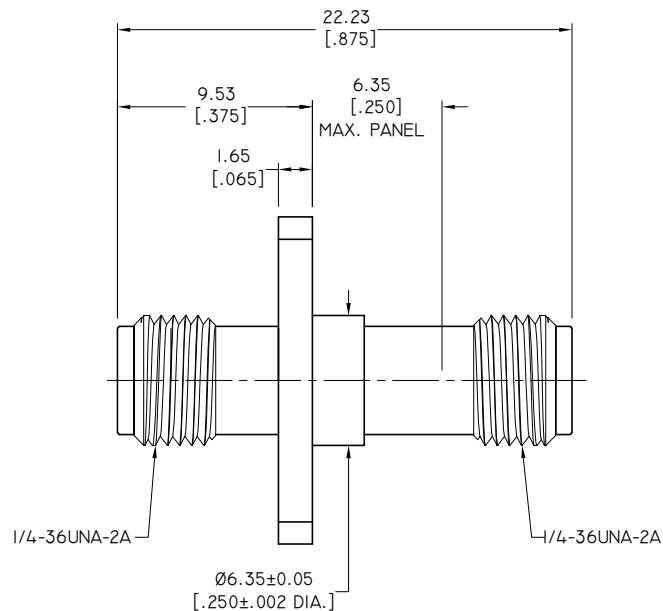
ENVIRONMENTAL DATA:

- 1 TEMPERATURE RANGE: -65°C~+165°C
- 2 2011/65/EU (RoHS): COMPLIANT

ELECTRICAL SPECIFICATIONS:

- 1 IMPEDANCE: 50 Ω
- 2 FREQUENCY RANGE: DC-18GHZ
- 3 VSWR: 1.25 MAX.
- 4 D.W.V.: 1000 VRMS MIN. AT 5MHZ
- 5 I.R.: 5000 MEGOHMS MIN.

REVISIONS			
REV.	DESCRIPTION	DATE	APPROVED
A	INITIAL RELEASE	05/15/20	J. QU



TABLE

PART NO.	PART	MATERIAL	FINISH
ANO 212-212-1537	BODY	BRASS	GOLD
ANO 212-212-1537-1		STAINLESS STEEL	PASSIVATED

DRAWN	W. YANG	DATE	05/15/20
CHECKED	P. CHEN	DATE	05/15/20
APPROVED	J. QU	DATE	05/15/20

UNLESS OTHERWISE SPECIFIED DIMENSIONS ARE IN MILLIMETERS, DIMENSIONS IN [] ARE IN INCHES FOR CUSTOMER REFERENCE ONLY UNLESS OTHERWISE SPECIFIED TOLERANCE ARE:

.XX	±0.13 [0.005"]
.X	±0.20 [0.008"]
X	±0.50 [0.019"]
.X°	±1°
X°	±2°

THESE DRAWINGS AND SPECIFICATIONS ARE THE PROPERTY OF ANOISON ELECTRONICS LTD AND SHOULD NOT BE USED WITHOUT WRITTEN PERMISSION
COPYRIGHT © 2020 ANOISON ELECTRONICS LTD



TITLE

ADAPTER, SMA FEMALE TO SMA FEMALE, 2 HOLE FLANGE

VIEW



PART NO.

ANO 212-212-1537

SIZE
A3SCALE
4:1SHEET
1/1REV.
A

4

3

2

1