

MATERIAL & FINISH:

- 1 BODY: STAINLESS STEEL, GOLD PLATED
- 2 CENTER CONTACT: BERYLLIUM COPPER ALLOY, GOLD PLATED
- 3 FASTENING NUT: STAINLESS STEEL, GOLD PLATED
- 4 LOCK WASHER: STAINLESS STEEL, GOLD PLATED
- 5 INSULATOR 1: PTFE
- 6 INSULATOR 2: GLASS
- 7 O-RING: BLACK SILICONE RUBBER

MECHANICAL DATA:

- 1 HERMETICITY: 1×10^{-7} CC/SEC AT ONT ATMOSPHERE
- 2 WEATHERPROOF: 30 PSI MAX.
- 3 RECOMMENDED MATING TORQUE: 7 TO 10 IN-LBS
- 4 MATING CHARACTERISTICS:
 INSERTION: 3.0 LBS MAX.
 WITHDRASAL: 1.0 MIN. OZ
- 5 FORCE TO ENGAGE AND DISENGAGE: 2.0 MIN. IN-LBS
- 6 CENTER CONTACT CAPTIVATION
 AXIAL: 6.0 LBS
 RADIAL: N/A IN-OZ

ELECTRICAL DATA:

- 1 IMPEDANCE: 50 Ω
- 2 FREQUENCY RANGE: DC~18 GHZ
- 3 VSWR: $1.10 + 0.01 F(\text{GHZ})$
- 4 INSERTION: $0.15 \sqrt{F(\text{GHZ})}$
- 5 VOLT RATING: 335 MAX. VRMS AT SEA LEVEL
- 6 DIELECTRIC WITHSTANDING VOLTAGE: 1000 VRMS MIN. AT SEA LEVEL
- 7 CONTACT RESISTANCE
 CENTER CONTACT: 12.0 MIL.LIOHMS MAX.
 OUTER CONTACT: 4.0 MILLIOHMS MAX.

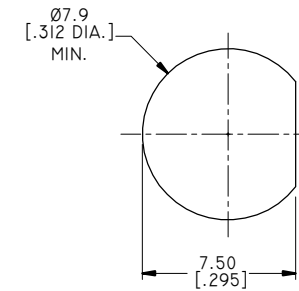
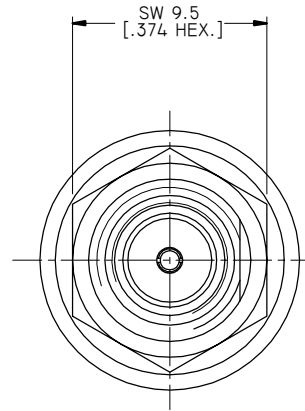
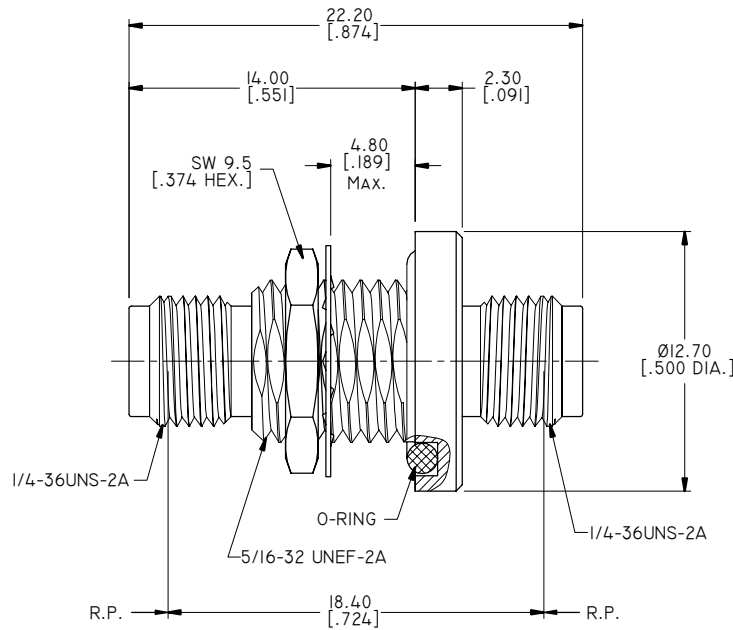
ENVIRONMENTAL DATA:

- 1 TEMPERATURE RANGE: -65°C~+165°C
- 2 2011/65/EU (RoHS): COMPLIANT

APPLICABLE STANDARDS:

- 1 INTERFACE ACCORDING TO: MIL-STD-348

REVISIONS			
REV.	DESCRIPTION	DATE	APPROVED
A	INITIAL RELEASE	06/08/16	J. Q
B	FINISH CHANGED	03/09/18	J. Q
C	BODY, FASTENING NUT AND LOCK WASHER FINISH CHANGED TO PASSIVATED	09/23/21	J. Q
D	BODY, FASTENING NUT AND LOCK WASHER FINISH CHANGED TO GOLD	04/18/23	J. Q
E	O-RING CHANGED TO BLACK SILICONE RUBBER	11/13/23	J. Q



RECOMMENDED MOUNTING HOLE

DRAWN	X. Y	DATE	11/13/23
CHECKED	W. Y	DATE	11/13/23
APPROVED	J. Q	DATE	11/13/23
UNLESS OTHERWISE SPECIFIED DIMENSIONS ARE IN MILLIMETERS, DIMENSIONS IN [] ARE IN INCHES FOR CUSTOMER REFERENCE ONLY UNLESS OTHERWISE SPECIFIED TOLERANCE ARE:		THESE DRAWINGS AND SPECIFICATIONS ARE THE PROPERTY OF ANOISON ELECTRONICS LTD AND SHOULD NOT BE USED WITHOUT WRITTEN PERMISSION COPYRIGHT © 2023 ANOISON ELECTRONICS LTD	
.XX	±0.13 [.005"]		
.X	±0.20 [.008"]		
X	±0.50 [.019"]		
.X°	±1°		
X°	±2°		



TITLE
ADAPTER, SMA BULKHEAD WATERPROOF FEMALE TO SMA FEMALE, HERMETIC SEAL

VIEW	PART NO. ANO 212-212-1370		
	SIZE A3	SCALE 4:1	SHEET 1/1
	REV. E		