

4

3

2

1

MATERIAL & FINISH:

- 1. BODY: BRASS, GOLD PLATED
- 2. CENTER CONTACT: BRASS, GOLD PLATED
- 3. CRIMP FERRULE: COPPER, NICKEL PLATED
- 4. INSULATOR: PTFE

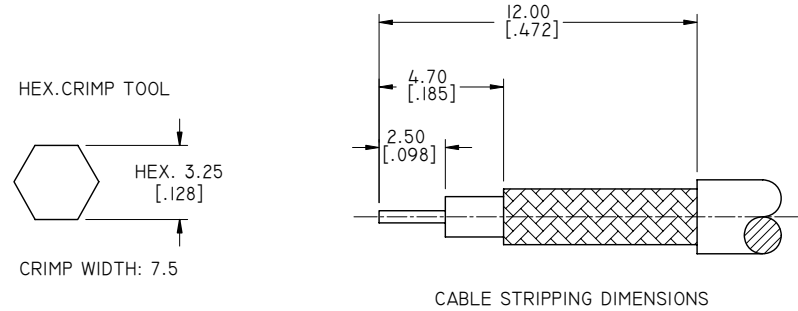
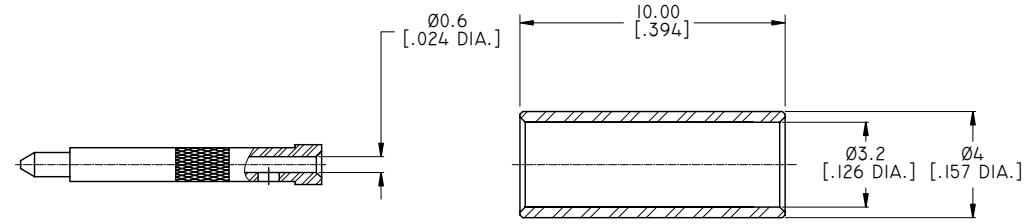
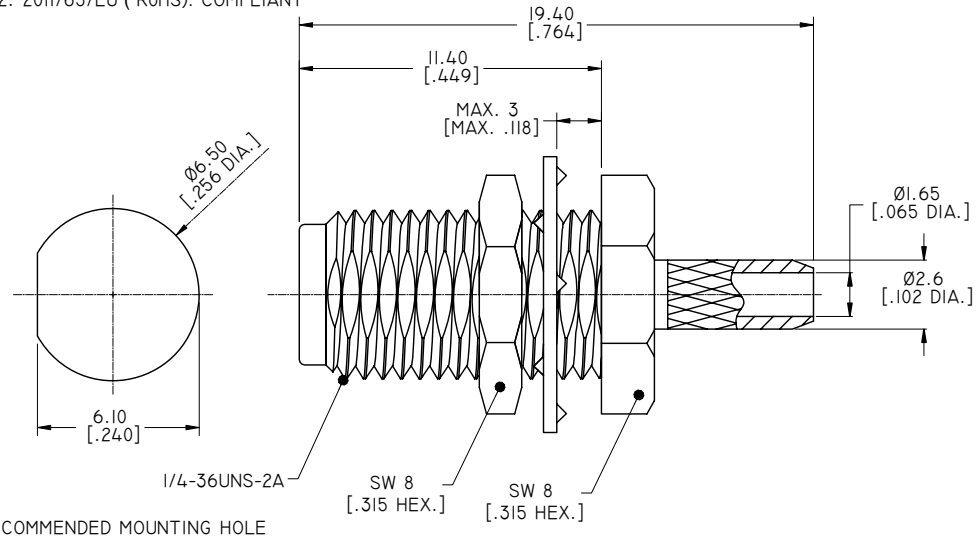
ELECTRICAL DATA:

- 1. IMPEDANCE: 50 Ω
- 2. FREQUENCY RANGE: DC~3GHZ


ENVIRONMENTAL DATA:

- 1. TEMPERATURE RANGE: -40°C~+125°C
- 2. 2011/65/EU (RoHS): COMPLIANT

REVISIONS			
REV.	DESCRIPTION	DATE	APPROVED
B	MODIFY TOLERANCE	12/15/08	J. QU
C	PART NO. CHANGED	08/16/10	J. QU
D	DRAWING FORMAT CHANGED	07/11/17	J. QU

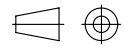


DRAWN	P. CHEN	DATE	07/11/17
CHECKED	L. YANG	DATE	07/11/17
APPROVED	J. QU	DATE	07/11/17
UNLESS OTHERWISE SPECIFIED DIMENSIONS ARE IN MILLIMETERS. DIMENSIONS IN [] ARE IN INCHES FOR CUSTOMER REFERENCE ONLY UNLESS OTHERWISE SPECIFIED TOLERANCE ARE:		THESE DRAWINGS AND SPECIFICATIONS ARE THE PROPERTY OF ANOISON ELECTRONICS LTD AND SHOULD NOT BE USED WITHOUT WRITTEN PERMISSION COPYRIGHT © 2017 ANOISON ELECTRONICS LTD	
.XX	±0.13 [.005"]		
.X	±0.20 [.008"]		
X	±0.50 [.019"]		
.X°	±1°		
X°	±2°		



ANOISON
...we create connection for technologies

TITLE
RP SMA STRAIGHT FEMALE CRIMP FOR LMRI00 /RG316/RG174 CABLE

VIEW


PART NO.
ANO 2114-1013

SIZE	SCALE	SHEET	REV.
A3	5:1	1/1	D

4

3

2

1