

1.0 MATERIAL & FINISH:

- 1.1 BODY: BRASS, NICKEL PLATED
- 1.2 COUPLING NUT: BRASS, NICKEL PLATED
- 1.3 CENTER CONTACT: BERYLLIUM COPPER ALLOY, GOLD PLATED
- 1.4 CRIMP FERRULE: COPPER, NICKEL PLATED
- 1.5 INSULATOR: PTFE

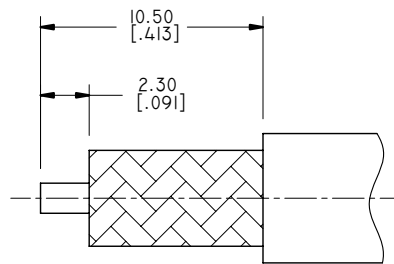
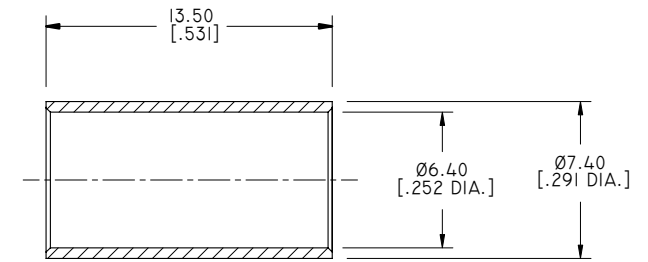
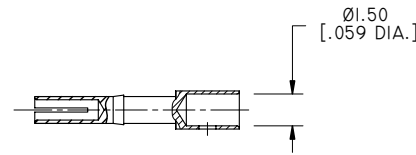
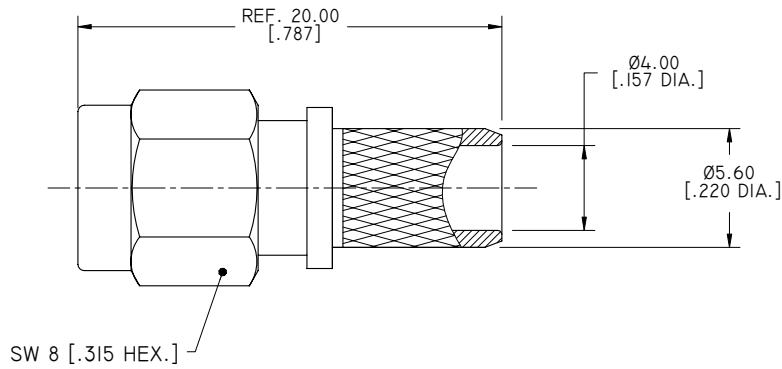
2.0 ENVIRONMENTAL DATA:

- 2.1 TEMPERATURE RANGE: -65°C~+165°C
- 2.2 2011/65/EU (RoHS): COMPLIANT

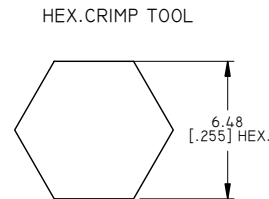
3.0 ELECTRICAL DATA:

- 3.1 IMPEDANCE: 50 Ω
- 3.2 FREQUENCY RANGE: DC~3 GHz
- 3.3 WITHSTANDING VOLTAGE: 1000V
- 3.4 VSWR: 1.30 MAX.

REVISIONS			
REV.	DESCRIPTION	DATE	APPROVED
A	INITIAL RELEASE	04/19/17	J. QU



CABLE STRIPPING DIMENSIONS



CRIMP WIDTH: 12.70 [.500]

DRAWN	L. YANG	DATE	04/19/17
CHECKED	W. YANG	DATE	04/19/17
APPROVED	J. QU	DATE	04/19/17
UNLESS OTHERWISE SPECIFIED DIMENSIONS ARE IN MILLIMETERS. DIMENSIONS IN [] ARE IN INCHES FOR CUSTOMER REFERENCE ONLY UNLESS OTHERWISE SPECIFIED TOLERANCE ARE:		THESE DRAWINGS AND SPECIFICATIONS ARE THE PROPERTY OF ANOISON ELECTRONICS LTD AND SHOULD NOT BE USED WITHOUT WRITTEN PERMISSION COPYRIGHT © 2017 ANOISON ELECTRONICS LTD	
.XX	±0.13 [.005"]		
.X	±0.20 [.008"]		
X	±0.50 [.019"]		
.X°	±1°		
X°	±2°		



TITLE
RP SMA STRAIGHT MALE CRIMP FOR LMR240 CABLE

VIEW	PART NO. ANO 2113-2445		
	SIZE A3	SCALE 4:1	SHEET 1/1
	REV. A		