

REVISIONS			
REV.	DESCRIPTION	DATE	APPROVED
A	INITIAL RELEASE	08/13/21	J. QU

MATERIAL & FINISH:

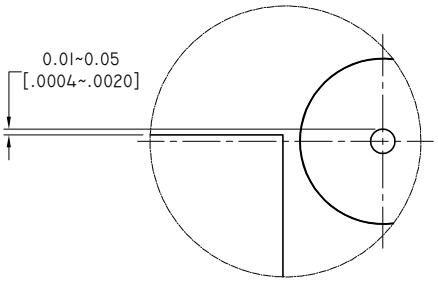
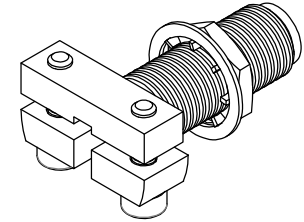
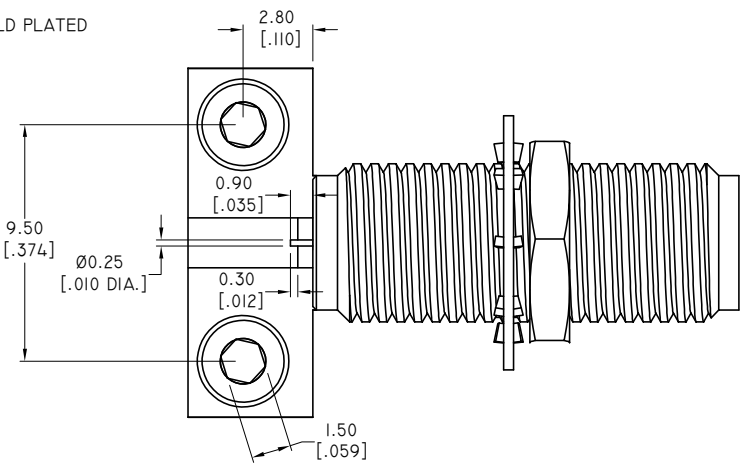
- 1 BODY: BRASS, GOLD PLATED
- 2 CENTER CONTACT: BERYLLIUM COPPER ALLOY, GOLD PLATED
- 3 INSULATOR: PTFE
- 4 SCREWS: STAINLESS STEEL, PASSIVATED
- 5 FASTENING NUT: BRASS, GOLD PLATED

ELECTRICAL DATA:

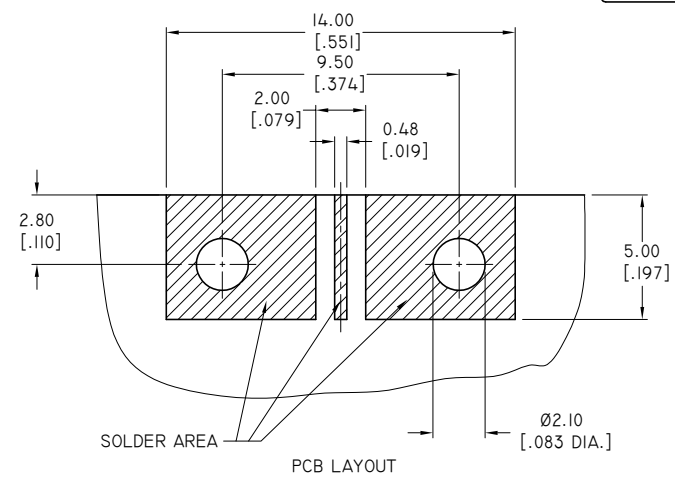
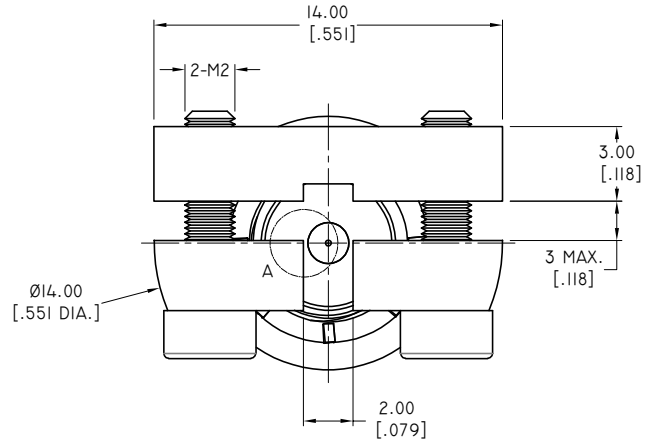
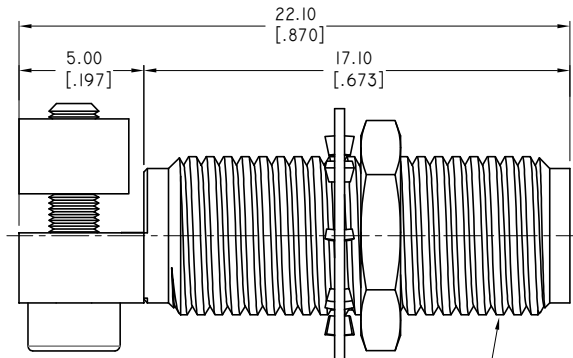
- 1 IMPEDANCE: 50 OHMS
- 2 FREQUENCY RANGE: DC~26.5 GHZ
- 3 VSWR: 1.10+0.02XF(GHZ)
- 4 INSERTION LOSS: 0.03 x SQRT(F [GHZ]) DB MAX.
- 5 CENTER CONTACT RESISTANCE: ≤3 MILLIOHMS
OUTER CONTACT RESISTANCE: ≤2 MILLIOHMS
- 6 WORKING VOLTAGE: 480 V RMS
- 7 TEST VOLTAGE: 1000 V RMS

ENVIRONMENTAL DATA:

- 1 OPERATING TEMPERATURE: -65°C~+165°C
- 2 2011/65/EU (RoHS): COMPLIANT



DETAIL A



PCB LAYOUT

DRAWN	W. YANG	DATE	08/13/21
CHECKED	X. B. YANG	DATE	08/13/21
APPROVED	J. QU	DATE	08/13/21
UNLESS OTHERWISE SPECIFIED DIMENSIONS ARE IN MILLIMETERS. DIMENSIONS IN [] ARE IN INCHES FOR CUSTOMER REFERENCE ONLY UNLESS OTHERWISE SPECIFIED TOLERANCE ARE:		THESE DRAWINGS AND SPECIFICATIONS ARE THE PROPERTY OF ANOISON ELECTRONICS LTD AND SHOULD NOT BE USED WITHOUT WRITTEN PERMISSION COPYRIGHT © 2021 ANOISON ELECTRONICS LTD	
.XX	±0.08 [.003"]		
.X	±0.20 [.008"]		
X	±0.50 [.019"]		
.X°	±1°		
X°	±2°		



TITLE				
SMA BULKHEAD FEMALE RIGTH ANGLE END LAUNCH				
VIEW		PART NO.		
		ANO 2112-4606		
SIZE	SCALE	SHEET	REV.	
A3	5:1	1/1	A	