

4 3 2 1

MATERIAL & FINISH:

- 1 BODY: BRASS, GOLD PLATED
- 2 CENTER CONTACT: BERYLLIUM COPPER ALLOY, GOLD PLATED
- 3 INSULATOR: PTFE

ELECTRICAL DATA:

- 1 IMPEDANCE: 50 OHMS
- 2 FREQUENCY RANGE: DC~18 GHZ
- 3 VSWR: 1.20 MAX.
- 4 INSERTION LOSS: 0.3 DB MAX.
- 5 RF LEAKAGE: -90 DB
- 6 INSULATION RESISTANCE: 5000 MΩ
- 7 DIELECTRIC WITHSTAND VOLTAGE: 1000 VRMS MAX.

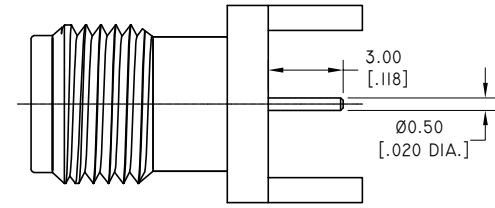
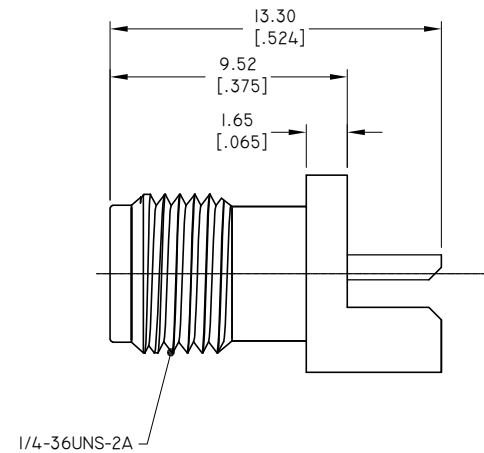
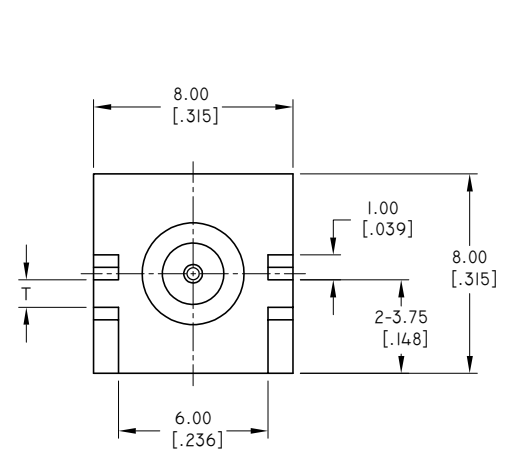
ENVIRONMENTAL DATA:

- 1 TEMPERATURE RANGE: -55°C~+125°C
- 2 2011/65/EU (RoHS): COMPLIANT

MECHANICAL DATA:

- 1 MATING CYCLE: 500
- 2 RECOMMENDED MATING TROUQUE: 0.9-1.13 NM
- 3 PROOF TORQUE: 1.7 NM
- 4 COUPLING NUT RETENTION FORCE: 270 N
- 5 CENTER CONTACT RETENTION FORCE: 2.6 POUND (AXIAL)

REVISIONS			
REV.	DESCRIPTION	DATE	APPROVED
A	INITIAL RELEASE	02/01/21	J. QU



PART NO.	T
ANO 2112-4579-00	0.60 [.024]
ANO 2112-4579-01	0.80 [.031]
ANO 2112-4579-02	1.00 [.039]
ANO 2112-4579-03	1.10 [.043]
ANO 2112-4579-04	1.20 [.047]
ANO 2112-4579-05	1.30 [.051]
ANO 2112-4579-06	1.50 [.059]
ANO 2112-4579-07	1.60 [.063]
ANO 2112-4579-08	1.73 [.068]
ANO 2112-4579-09	2.10 [.083]
ANO 2112-4579-10	2.25 [.089]

DRAWN	L. YANG	DATE	02/01/21
CHECKED	W. YANG	DATE	02/01/21
APPROVED	J. QU	DATE	02/01/21
UNLESS OTHERWISE SPECIFIED DIMENSIONS ARE IN MILLIMETERS, DIMENSIONS IN [] ARE IN INCHES FOR CUSTOMER REFERENCE ONLY UNLESS OTHERWISE SPECIFIED TOLERANCE ARE:		THESE DRAWINGS AND SPECIFICATIONS ARE THE PROPERTY OF ANOISON ELECTRONICS LTD AND SHOULD NOT BE USED WITHOUT WRITTEN PERMISSION COPYRIGHT © 2021 ANOISON ELECTRONICS LTD	
.XX	±0.13 [.005"]		
.X	±0.20 [.008"]		
X	±0.50 [.019"]		
.X°	±1°		
X°	±2°		

TITLE: SMA STRAIGHT FEMALE EDGE MOUNT BOARD THICKNESS PCB

VIEW:

PART NO. ANO 2112-4579

SIZE	SCALE	SHEET	REV.
A3	5:1	1/1	A

4 3 2 1