

4 3 2 1

MATERIAL & FINISH:

- 1 BODY: BRASS, GOLD PLATED
- 2 CENTER CONTACT: BERYLLIUM COPPER ALLOY, GOLD PLATED
- 3 LOCK WASHER: BRASS, GOLD PLATED
- 4 LOCK NUT: BERYLLIUM COPPER ALLOY, GOLD PLATED
- 5 INSULATOR: PTFE

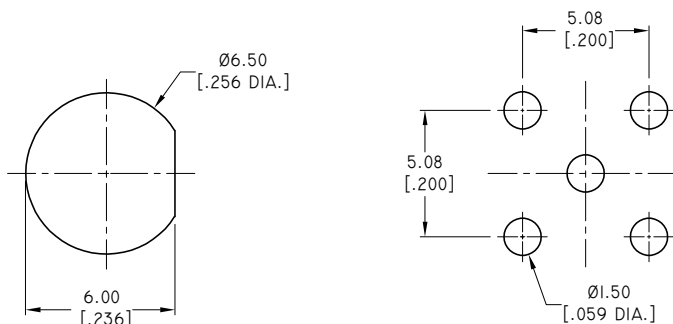
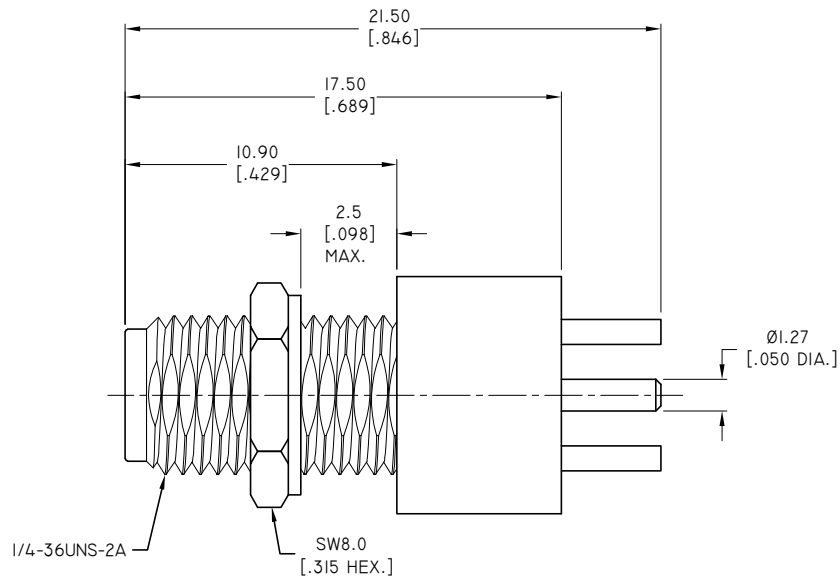
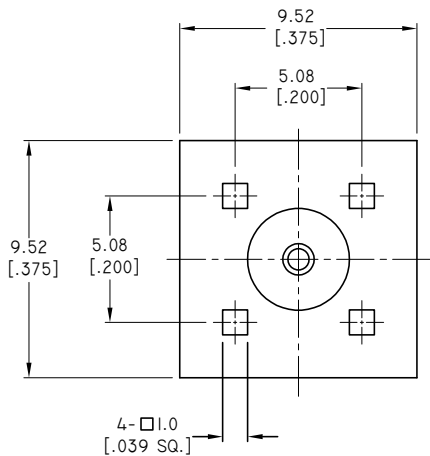
ELECTRICAL DATA:

- 1 IMPEDANCE: 50 Ω
- 2 FREQUENCY RANGE: DC~18 GHz

REVISIONS			
REV.	DESCRIPTION	DATE	APPROVED
A	INITIAL RELEASE	09/12/08	J. QU

ENVIRONMENTAL DATA:

- 1 TEMPERATURE RANGE: -55°C~+155°C
- 2 2011/65/EU (RoHS): COMPLIANT



RECOMMENDED MOUNTING HOLE

DRAWN	L. YANG	DATE	09/12/08
CHECKED	B. PAN	DATE	09/12/08
APPROVED	J. QU	DATE	09/12/08
UNLESS OTHERWISE SPECIFIED DIMENSIONS ARE IN MILLIMETERS, DIMENSIONS IN [] ARE IN INCHES FOR CUSTOMER REFERENCE ONLY UNLESS OTHERWISE SPECIFIED TOLERANCE ARE:		THESE DRAWINGS AND SPECIFICATIONS ARE THE PROPERTY OF ANOISON ELECTRONICS LTD AND SHOULD NOT BE USED WITHOUT WRITTEN PERMISSION COPYRIGHT © 2008 ANOISON ELECTRONICS LTD	
.XX	±0.13 [.005"]		
.X	±0.20 [.008"]		
X	±0.50 [.019"]		
.X°	±1°		
X°	±2°		



TITLE			
SMA STRAIGHT BULKHEAD FEMALE FOR PCB MOUNT			
VIEW		PART NO.	
		ANO 2112-4019	
SIZE	SCALE	SHEET	REV.
A3	5:1	1/1	A

4 3 2 1