

4 3 2 1

MATERIAL & FINISH:

- 1 BODY: BRASS, SEE TABLE
- 2 CENTER CONTACT: BERYLLIUM COPPER ALLOY, SEE TABLE
- 3 INSULATOR: PTFE

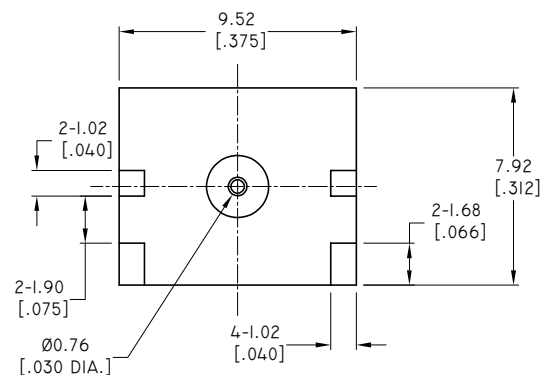
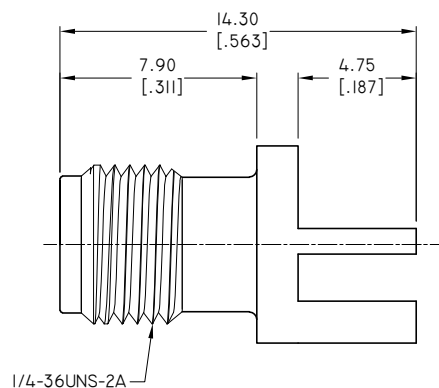
ELECTRICAL DATA:

- 1 IMPEDANCE: 50 Ω
- 2 FREQUENCY RANGE: DC~26.5 GHZ
- 3 VSWR: 1.05+.02F(GHZ) MAX. DC~18GHZ
TYPICALLY<1.50 @ 18~26.5GHZ

ENVIRONMENTAL DATA:

- 1 TEMPERATURE RANGE: -55°C~+125°C
- 2 2011/65/EU(ROHS) AND 2015/863/(ROHS): COMPLIANT
- 3 1907/2006/EC(REACH): COMPLIANT

| REVISIONS | | | |
|-----------|-------------------------|----------|----------|
| REV. | DESCRIPTION | DATE | APPROVED |
| D | STRUCTURE CHANGED | 11/25/10 | J. Q |
| E | DRAWING FORMART CHANGED | 02/01/20 | J. Q |
| F | ADDED P/N | 02/03/20 | J. Q |
| G | FREQUENCY CHANGED | 09/01/23 | J. Q |



| P/N | DESCRIBE | FINISH |
|-----------------|----------------|---------------|
| ANO 2112-4016-1 | BODY | GOLD |
| | CENTER CONTACT | |
| ANO 2112-4016-2 | BODY | GOLD 0.25 μ m |
| | CENTER CONTACT | GOLD 1.27 μ m |

| | | | |
|---|----------------|--|----------|
| DRAWN | W. Y | DATE | 09/01/23 |
| CHECKED | X. Y | DATE | 09/01/23 |
| APPROVED | J. Q | DATE | 09/01/23 |
| UNLESS OTHERWISE SPECIFIED DIMENSIONS ARE IN MILLIMETERS, DIMENSIONS IN [] ARE IN INCHES FOR CUSTOMER REFERENCE ONLY UNLESS OTHERWISE SPECIFIED TOLERANCE ARE: | | THESE DRAWINGS AND SPECIFICATIONS ARE THE PROPERTY OF ANOISON ELECTRONICS LTD AND SHOULD NOT BE USED WITHOUT WRITTEN PERMISSION COPYRIGHT © 2023 ANOISON ELECTRONICS LTD | |
| .XX | ±0.13 [0.005"] | | |
| .X | ±0.20 [0.008"] | | |
| X | ±0.50 [0.019"] | | |
| .X° | ±1° | | |
| X° | ±2° | | |

TITLE
SMA STRAIGHT FEMALE EDGE MOUNT FOR .069 BOARD THICKNESS PCB

VIEW

PART NO. ANO 2112-4016

| | | | |
|-------------------|---------------------|---------------------|------------------|
| SIZE A3 | SCALE 5:1 | SHEET 1/1 | REV. G |
|-------------------|---------------------|---------------------|------------------|

D
C
B
A

D
C
B
A

4 3 2 1