

4 3 2 1

MATERIAL & FINISH:

- 1 BODY: STAINLESS STEEL, PASSIVATED
- 2 CENTER CONTACT: BERYLLIUM COPPER ALLOY, GOLD PLATED
- 3 INSULATOR: PTFE

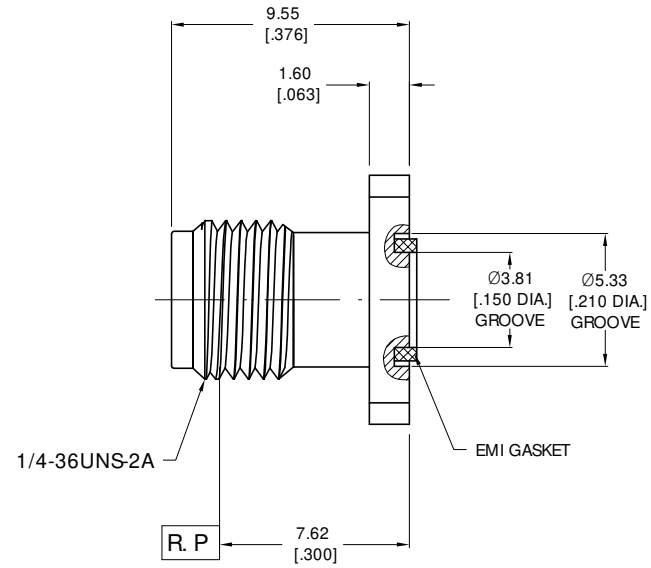
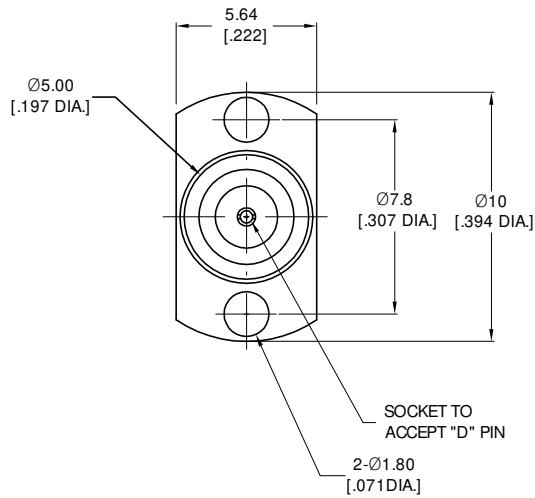
ELECTRICAL DATA:

- 1 IMPEDANCE: 50 Ω
- 2 FREQUENCY RANGE: DC-27 GHz
- 3 VSWR: ≤1.20

ENVIRONMENTAL DATA:


- 1 TEMPERATURE RANGE: -55 °C~+125 °C
- 2 2011/65/EU (RoHS) AND 2015/863/(RoHS): COMPLIANT
- 3 1907/2006/EC (REACH): COMPLIANT

REVISIONS			
REV.	DESCRIPTION	DATE	APPROVED
A	INITIAL RELEASE	02/22/22	J QU
B	ADDED EMI	02/23/22	J QU

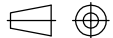


PART NO.	D	MAX. PIN DEPTH
ANO 2112-3620-1	Ø0.30 [.012 DIA.]	1.78 [.070]
ANO 2112-3620-2	Ø0.38 [.015 DIA.]	1.83 [.072]
ANO 2112-3620-3	Ø0.46 [.018 DIA.]	1.83 [.072]
ANO 2112-3620-4	Ø0.51 [.020 DIA.]	1.78 [.070]

DRAWN	P. CHEN	DATE	02/23/22
CHECKED	W. YANG	DATE	02/23/22
APPROVED	J QU	DATE	02/23/22
UNLESS OTHERWISE SPECIFIED DIMENSIONS ARE IN MILLIMETERS, DIMENSIONS IN [] ARE IN INCHES FOR CUSTOMER REFERENCE ONLY UNLESS OTHERWISE SPECIFIED TOLERANCE ARE:		THESE DRAWINGS AND SPECIFICATIONS ARE THE PROPERTY OF ANOISON ELECTRONICS LTD AND SHOULD NOT BE USED WITHOUT WRITTEN PERMISSION COPYRIGHT © 2022 ANOISON ELECTRONICS LTD	
XX	±0.13 [.005"]		
.X	±0.20 [.008"]		
X	±0.50 [.019"]		
.X°	±1°		
X°	±2°		



TITLE
SMA STRAIGHT FEMALE 2 HOLE FLANGE, .394" LONG, .307" HOLE SPACING, MOUNT RECEPTACLE, ACCEPT PIN

VIEW		PART NO. ANO 2112-3620
SIZE A3	SCALE 5:1	SHEET 1/1
REV. B		

D
C
B
A

D
C
B
A

4 3 2 1