

MATERIAL:

- 1 BODY: STAINLESS STEEL, PASSIVATED
- 2 CENTER CONTACT: BERYLLIUM COPPER ALLOY
- 3 INSULATOR: PTFE

FINISH:

- 1 BODY: PASSIVATED
- 2 CENTER CONTACT: GOLD PER MIL-G-45204, TYPE I,  
GRADE C, CLASS I: OVER NICKEO PER QQ-N-290, CLASS I.

ELECTRICAL DATA:

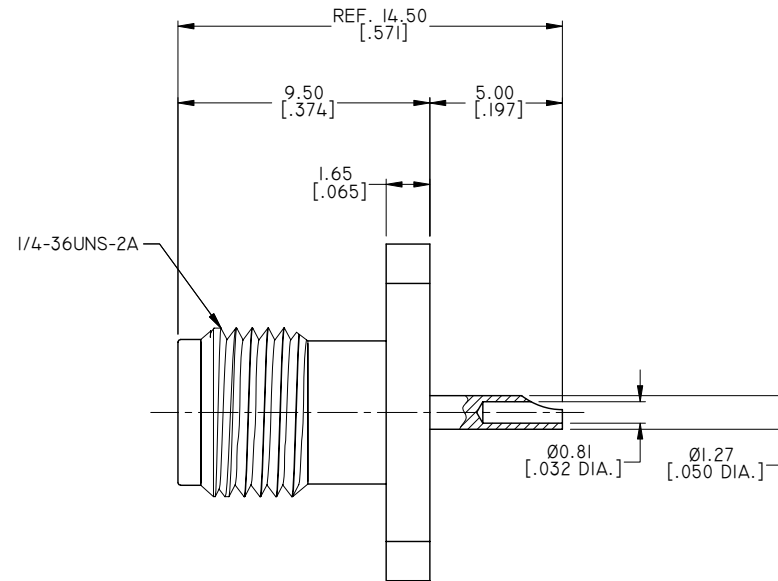
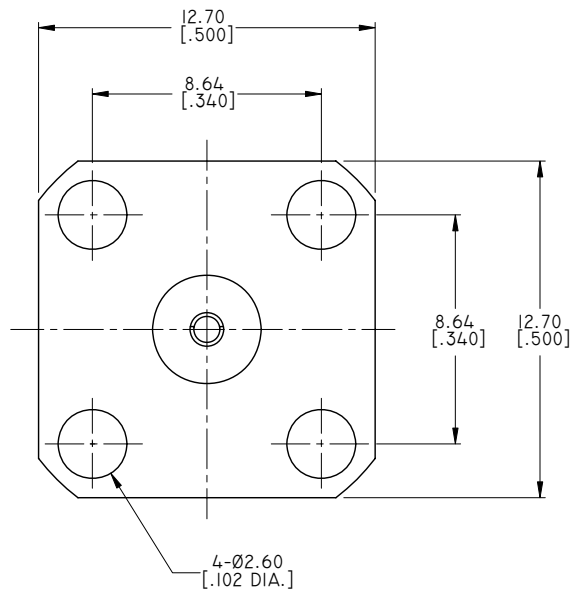
- 1 IMPEDANCE: 50 Ω
- 2 FREQUENCY RANGE: DC-18 GHZ
- 3 D.W.V.: 1000 VRMS
- 4 INSULATION RESISTANCE: 5000 MΩ MIN.

ENVIRONMENTAL DATA:

- 1 TEMPERATURE RANGE: -55°C~+125°C
- 2 2011/65/EU(RoHS) AND 2015/863/(RoHS): COMPLIANT
- 3 1907/2006/EC(REACH) AND 1999/45/EC(REACH): COMPLIANT

REVISIONS

REV.	DESCRIPTION	DATE	APPROVED
A	INITIAL RELEASE	05/05/19	J. QU



DRAWN	X. B. YANG	DATE	05/05/19
CHECKED	W. YANG	DATE	05/05/19
APPROVED	J. QU	DATE	05/05/19
UNLESS OTHERWISE SPECIFIED DIMENSIONS ARE IN MILLIMETERS, DIMENSIONS IN [ ] ARE IN INCHES FOR CUSTOMER REFERENCE ONLY UNLESS OTHERWISE SPECIFIED TOLERANCE ARE:		THESE DRAWINGS AND SPECIFICATIONS ARE THE PROPERTY OF ANOISON ELECTRONICS LTD AND SHOULD NOT BE USED WITHOUT WRITTEN PERMISSION COPYRIGHT © 2019 ANOISON ELECTRONICS LTD	
.XX	±0.13 [.005"]		
.X	±0.20 [.008"]		
X	±0.50 [.019"]		
.X°	±1°		
X°	±2°		



TITLE  
SMA STRAIGHT FEMALE, 4 HOLE .375 SQ. FLANGE MOUNT SOLDER CUP CONTACT

VIEW	PART NO. ANO 2112-3526						
SIZE	A3	SCALE	5:1	SHEET	1/1	REV.	A