

MATERIAL & FINISH:

- 1 BODY: STAINLESS STEEL, PASSIVATED
- 2 CENTER CONTACT: BERYLLIUM COPPER ALLOY, GOLD PLATED
- 3 INSULATOR: PTFE

ENVIRONMENTAL DATA:

- 1 TEMPERATURE RANGE: -55°C~+125°C
- 2 2011/65/EU(RoHS) AND 2015/863/(RoHS): COMPLIANT
- 3 1999/45/EC(REACH): COMPLIANT

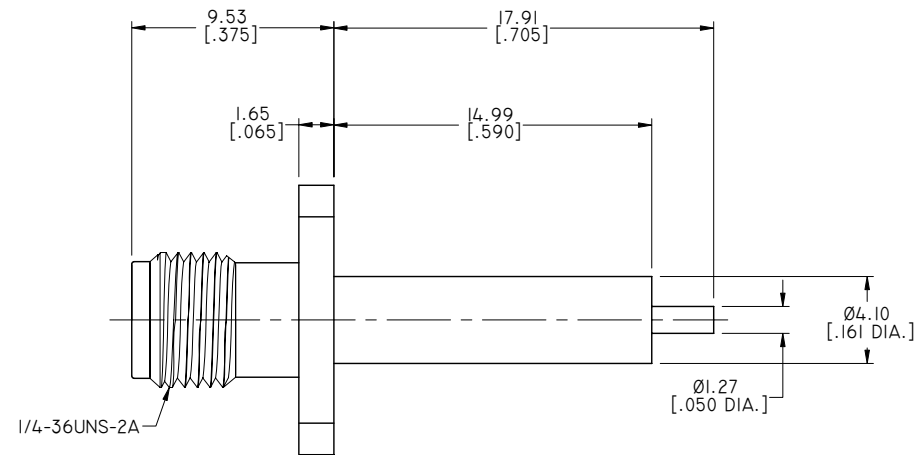
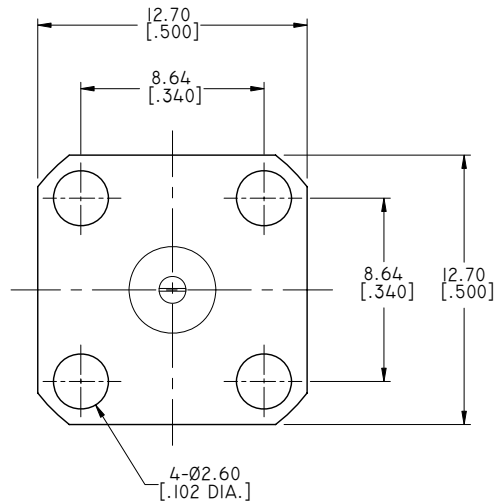
MECHANICAL DATA:

- 1 ENGAGE/DISENGAGE TORQUE: 2 INCH-POUNDS MAX.
- 2 MATING TORQUE: 7-10 INCH-POUNDS
- 3 CONTACT RETENTION: 6 LBS MIN. AXIAL FORCE
4 IN-OZ MIN. RADIAL TORQUE
- 4 DURABILITY: >500 CYCLES

ELECTRICAL DATA:

- 1 IMPEDANCE: 50 Ω
- 2 FREQUENCY RANGE: DC~18 GHZ
- 3 VSWR: 1.25 MAX.
- 4 INSERTION LOSS: 0.03XF(GHZ) DB MAX.
- 5 WITHSTANDING VOLTAGE: 1000 VRMS MIN.
- 6 VOLTAGE RATING (VRMS): 500V
- 7 INSULATION RESISTANCE: ≥5000MΩ
- 8 CONTACT RESTANCE:
CENTER CONTACT: 3.0 OHMS
OUTER CONDUCTOR: 2.0 OHMS

REVISIONS			
REV.	DESCRIPTION	DATE	APPROVED
A	INITIAL RELEASE	02/14/19	J. QU



DRAWN	X. B. YANG	DATE	02/14/19
CHECKED	W. YANG	DATE	02/14/19
APPROVED	J. QU	DATE	02/14/19
UNLESS OTHERWISE SPECIFIED DIMENSIONS ARE IN MILLIMETERS. DIMENSIONS IN [] ARE IN INCHES FOR CUSTOMER REFERENCE ONLY UNLESS OTHERWISE SPECIFIED TOLERANCE ARE:		THESE DRAWINGS AND SPECIFICATIONS ARE THE PROPERTY OF ANOISON ELECTRONICS LTD AND SHOULD NOT BE USED WITHOUT WRITTEN PERMISSION COPYRIGHT © 2019 ANOISON ELECTRONICS LTD	
.XX	±0.13 [.005"]		
.X	±0.20 [.008"]		
X	±0.50 [.019"]		
.X°	±1°		
X°	±2°		



TITLE			
SMA FEMALE, 4 HOLE .500 SQ. FLANGE MOUNT, POST CONTACT			
VIEW		PART NO.	
		ANO 2112-3519	
SIZE	SCALE	SHEET	REV.
A3	5:1	1/1	A