

1.0 MATERIAL & FINISH:

- 1.1 BODY: BRASS, GOLD PLATED
- 1.2 CENTER CONTACT: BERYLLIUM COPPER ALLOY, GOLD PLATED
- 1.3 INSULATOR: PTFE

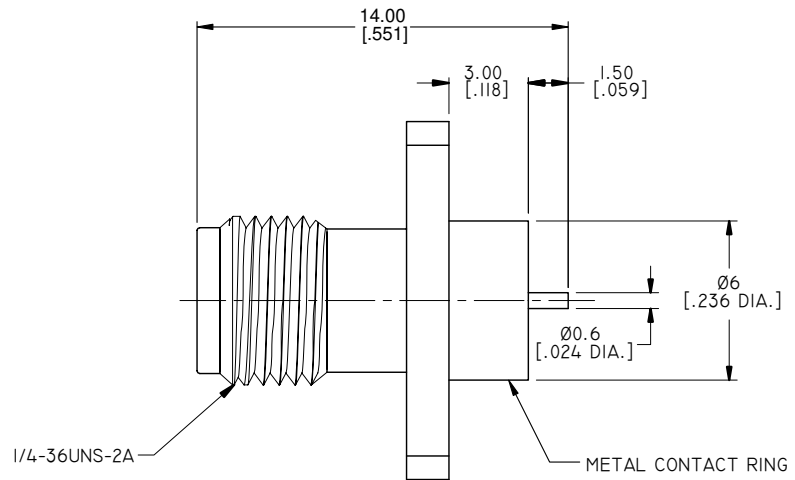
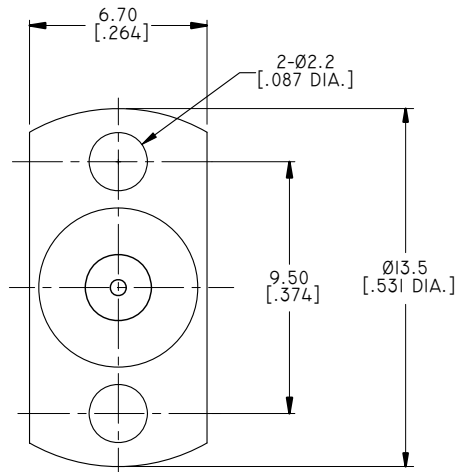
2.0 ENVIRONMENTAL DATA:

- 2.1 TEMPERATURE RANGE: -65°C~+165°C
- 2.2 2011/65/EU (RoHS): COMPLIANT

3.0 ELECTRICAL DATA:

- 3.1 IMPEDANCE: 50 Ω
- 3.2 FREQUENCY RANGE: DC~18 GHz
- 3.3 VSWR: 1.25 MAX.

REVISIONS			
REV.	DESCRIPTION	DATE	APPROVED
B	CHANGED MATERIAL & FINISH	04/21/17	J. QU
C	DRAWING FORMAT CHANGED	07/27/17	J. QU



DRAWN	P. CHEN	DATE	07/27/17
CHECKED	L. YANG	DATE	07/27/17
APPROVED	J. QU	DATE	07/27/17
UNLESS OTHERWISE SPECIFIED DIMENSIONS ARE IN MILLIMETERS. DIMENSIONS IN [] ARE IN INCHES FOR CUSTOMER REFERENCE ONLY UNLESS OTHERWISE SPECIFIED TOLERANCE ARE:		THESE DRAWINGS AND SPECIFICATIONS ARE THE PROPERTY OF ANOISON ELECTRONICS LTD AND SHOULD NOT BE USED WITHOUT WRITTEN PERMISSION COPYRIGHT © 2017 ANOISON ELECTRONICS LTD	
.XX	±0.13 [0.005"]		
.X	±0.20 [0.008"]		
X	±0.50 [0.019"]		
.X°	±1°		
X°	±2°		



TITLE			
SMA STRAIGHT FEMALE 2 HOLE FLANGE .531" LONG, EXTENDED POST			
VIEW		PART NO.	
		ANO 2112-3446	
SIZE	SCALE	SHEET	REV.
A3	5:1	1/1	C