

1.0 MATERIAL & FINISH

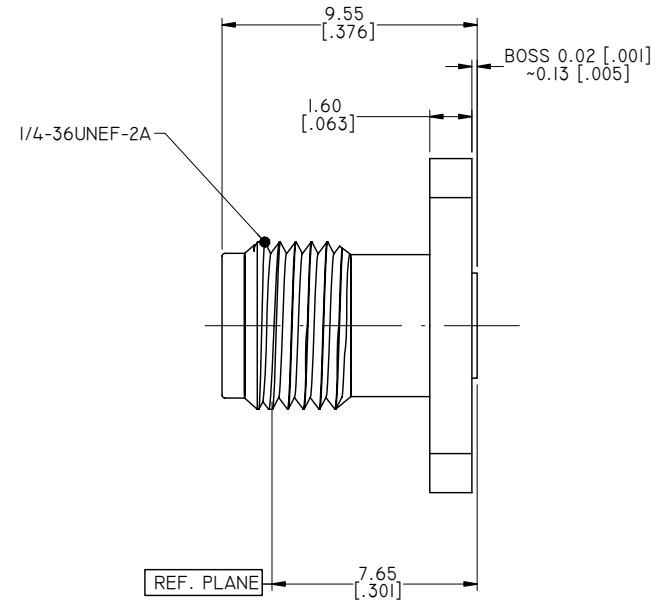
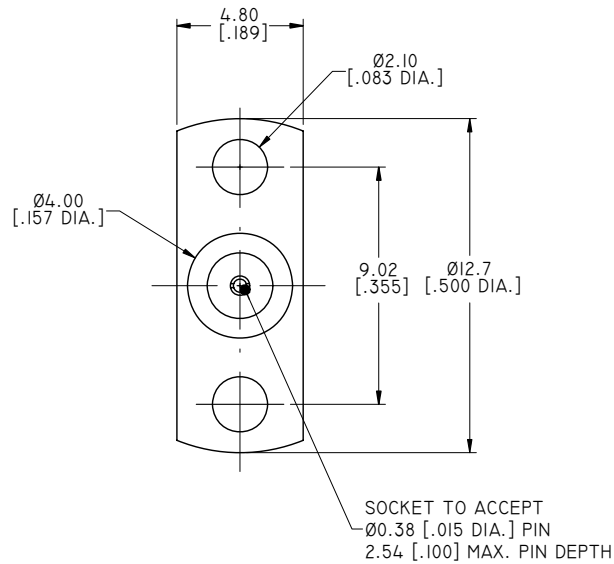
- 1.1 BODY: STAINLESS STEEL, PASSIVATED
- 1.2 CENTER CONTACT: BERYLLIUM COPPER ALLOY, GOLD PLATING
- 1.3 INSULATOR: PTFE
- 1.4 CAPTURE BEAD: PEI

2.0 ENVIRONMENTAL DATA:

- 2.1 TEMPERATURE RANGE: -55°C~+165°C
- 2.2 2011/65/EU (RoHS): COMPLIANT

3.0 ELECTRICAL SPECIFICATIONS:

- 3.1 IMPEDANCE: 50 Ω
- 3.2 FREQUENCY RANGE: DC~27GHZ
- 3.3 VSWR: ≤1.10 AT DC~18GHZ  
≤1.15 AT 18~27GHZ



REVISIONS			
REV.	DESCRIPTION	DATE	APPROVED
A	INITIAL RELEASE	11/30/15	J. QU
B	Ø2.10 WAS Ø2.0~Ø2.26	03/14/18	J. QU

DRAWN	P. CHEN	DATE	03/14/18
CHECKED	X. B. YANG	DATE	03/14/18
APPROVED	J. QU	DATE	03/14/18
UNLESS OTHERWISE SPECIFIED DIMENSIONS ARE IN MILLINETERS, DIMENSIONS IN [ ] ARE IN INCHES FOR CUSTOMER REFERENCE ONLY UNLESS OTHERWISE SPECIFIED TOLERANCE ARE:		THESE DRAWINGS AND SPECIFICATIONS ARE THE PROPERTY OF ANOISON ELECTRONICS LTD AND SHOULD NOT BE USED WITHOUT WRITTEN PERMISSION COPYRIGHT © 2018 ANOISON ELECTRONICS LTD	
.XX	±0.13 [.005"]		
.X	±0.20 [.008"]		
X	±0.50 [.019"]		
.X°	±1°		
X°	±2°		



TITLE  
SMA FEMALE 2 HOLE FLANGE, FIELD REPLACEABLE

VIEW	PART NO. ANO 2112-3367		
	SIZE A3	SCALE 5:1	SHEET 1/1
			REV. B