

1.0 MATERIAL & FINISH

1.1 BODY: STAINLESS STEEL, PASSIVATED

1.2 CENTER CONTACT: BERYLLIUM COPPER ALLOY, GOLD PLATING

1.3 INSULATOR: PTFE & PEI

2.0 ENVIRONMENTAL DATA:

2.1 TEMPERATURE RANGE: -55°C~+165°C

2.2 2011/65/EU (RoHS): COMPLIANT

3.0 ELECTRICAL SPECIFICATIONS:

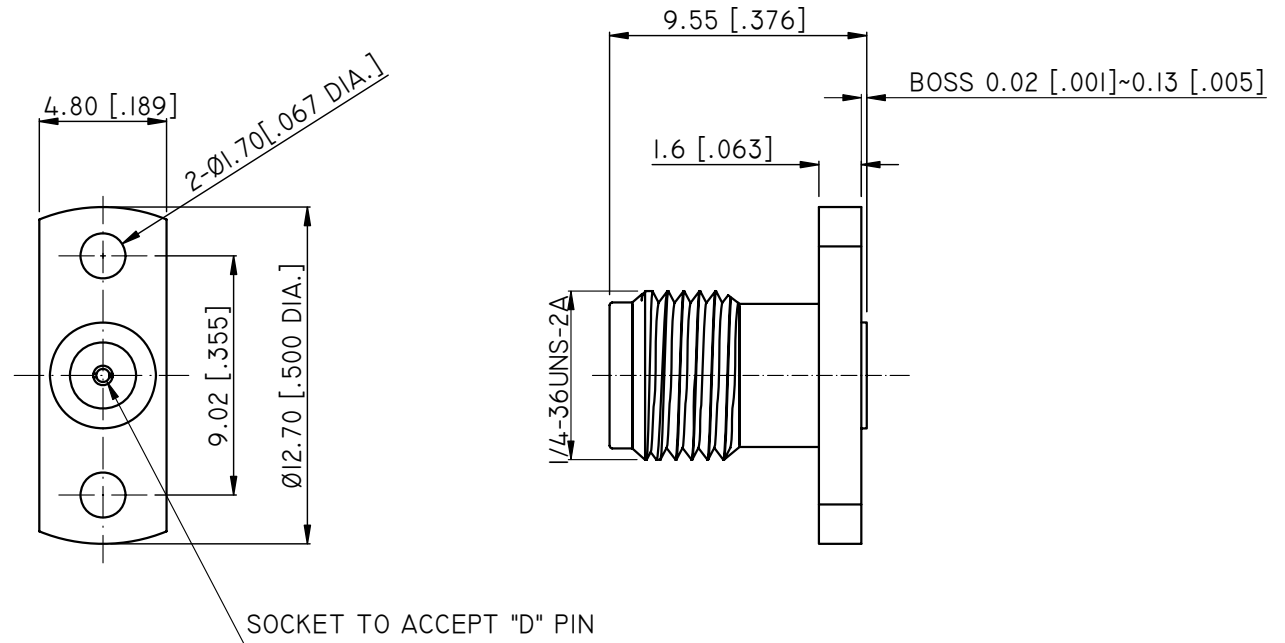
3.1 IMPEDANCE: 50 Ω

3.2 FREQUENCY RANGE: DC~27GHZ

3.3 VSWR: ≤1.10 AT DC~18GHZ

≤1.15 AT 18~27GHZ

REVISIONS			
REV.	DESCRIPTION	DATE	APPROVED
A	INITIAL RELEASE	01/20/15	J. QU
B	CHANGED BETWEEN HOLE	01/21/15	J. QU
C	CHANGED LENGTH .376 WAS .370	05/14/15	J. QU



PART NO.	D	MAX. PIN DEPTH
ANO 2112-3326-1	Ø0.23 [.009 DIA.]	1.65 [.065]
ANO 2112-3326-2	Ø0.30 [.012 DIA.]	1.91 [.075]
ANO 2112-3326-3	Ø0.38 [.015 DIA.]	2.54 [.100]
ANO 2112-3326-4	Ø0.46 [.018 DIA.]	2.54 [.100]
ANO 2112-3326-5	Ø0.51 [.020 DIA.]	2.54 [.100]

DRAWN L. YANG	DATE 05/14/15		
CHECKED X. B. YANG	DATE 05/14/15		
APPROVED J. QU	DATE 05/14/15	TITLE SMA STRAIGHT FEMALE, 2 HOLE FLANGE FIELD REPLACEABLE	
UNLESS OTHERWISE SPECIFIED DIMENSIONS ARE IN MILLIMETERS, DIMENSIONS IN [] ARE IN INCHES FOR CUSTOMER REFERENCE ONLY UNLESS OTHERWISE SPECIFIED TOLERANCE ARE: .XX ±0.13 [.005"] .X ±0.20 [.008"] X ±0.50 [.019"] .X° ±1° X° ±2°		THESE DRAWINGS AND SPECIFICATIONS ARE THE PROPERTY OF ANOISON ELECTRONICS LTD AND SHOULD NOT BE USED WITHOUT WRITTEN PERMISSION COPYRIGHT © 2015 ANOISON ELECTRONICS LTD	
VIEW		PART NO. ANO 2112-3326	REV. C
		SIZE A3	SCALE 5:1
		SHEET 1/1	