

**MATERIAL & FINISH:**

- 1 BODY: STAINLESS STEEL, PASSIVATED
- 2 CENTER CONTACT: BERYLLIUM COPPER ALLOY, GOLD PLATED
- 3 INSULATOR: PTFE & PEI

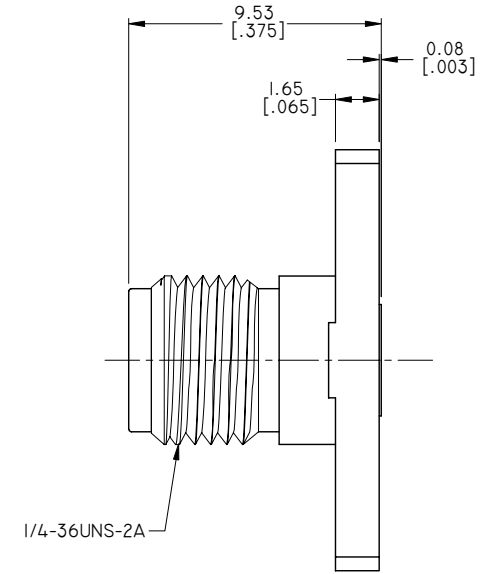
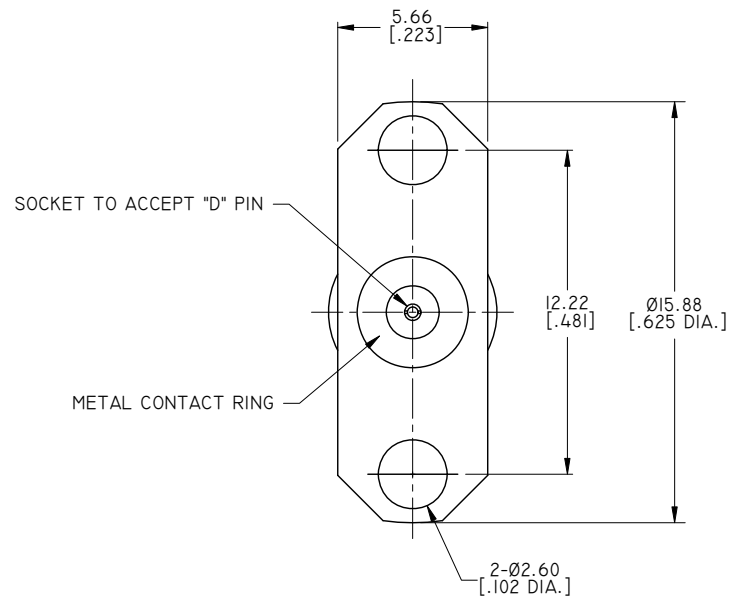
**ENVIRONMENTAL DATA:**

- 1 TEMPERATURE RANGE: -65°C~+165°C
- 2 2015/863/(ROHS): COMPLIANT
- 3 1907/2006/EC(REACH) AND 1999/45/EC(REACH): COMPLIANT

**ELECTRICAL DATA:**

- 1 IMPEDANCE: 50 Ω
- 2 FREQUENCY RANGE: DC~27 GHZ
- 3 VSWR: 1.10 MAX. AT DC~18 GHZ  
1.15 MAX. AT 18~27 GHZ
- 4 LOW INSERTION LOSS
- 5 RF LEAKAGE: < -100 DB

REVISIONS			
REV.	DESCRIPTION	DATE	APPROVED
B	PART NO. ANO 2112-3325-6 ADDED	04/23/15	J. QU
C	OVERALL LENGTH CHANGED	11/05/15	J. QU
D	FREQUENCY RANGE & VSWR CHANGED	05/30/19	J. QU



PART NO.	D	PIN DEPTH MAX.
ANO 2112-3325-1	Ø0.23 [0.009 DIA.]	1.65 [0.065]
ANO 2112-3325-2	Ø0.30 [0.012 DIA.]	1.91 [0.075]
ANO 2112-3325-3	Ø0.38 [0.015 DIA.]	2.54 [0.100]
ANO 2112-3325-4	Ø0.46 [0.018 DIA.]	2.54 [0.100]
ANO 2112-3325-5	Ø0.51 [0.020 DIA.]	2.54 [0.100]
ANO 2112-3325-6	Ø0.91 [0.036 DIA.]	2.54 [0.100]

DRAWN	X. B. YANG	DATE	05/30/19
CHECKED	W. YANG	DATE	05/30/19
APPROVED	J. QU	DATE	05/30/19
UNLESS OTHERWISE SPECIFIED DIMENSIONS ARE IN MILLIMETERS. DIMENSIONS IN [ ] ARE IN INCHES FOR CUSTOMER REFERENCE ONLY UNLESS OTHERWISE SPECIFIED TOLERANCE ARE:		THESE DRAWINGS AND SPECIFICATIONS ARE THE PROPERTY OF ANOISON ELECTRONICS LTD AND SHOULD NOT BE USED WITHOUT WRITTEN PERMISSION COPYRIGHT © 2019 ANOISON ELECTRONICS LTD	
.XX	±0.13 [0.005"]		
.X	±0.20 [0.008"]		
X	±0.50 [0.019"]		
.X°	±1°		
X°	±2°		



TITLE			
SMA STRAIGHT FEMALE 2 HOLE FLANGE .625 LONG, FIELD REPLACEABLE			
VIEW		PART NO.	
		ANO 2112-3325	
SIZE	SCALE	SHEET	REV.
A3	5:1	1/1	D