

MATERIAL & FINISH:

- 1 BODY: STAINLESS STEEL, SEE TABLE
- 2 CENTER CONTACT: BERYLLIUM COPPER ALLOY, GOLD PLATED
- 3 INSULATOR: PTFE & PEI

ENVIRONMENTAL DATA:

- 1 TEMPERATURE RANGE: -55°C~+125°C
- 2 2011/65/EU(RoHS) AND 2015/863/(RoHS): COMPLIANT
- 3 1907/2006/EC(REACH) AND 1999/45/EC(REACH): COMPLIANT

ELECTRICAL DATA:

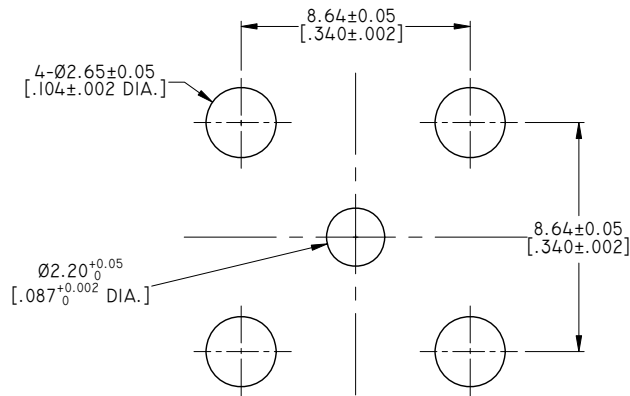
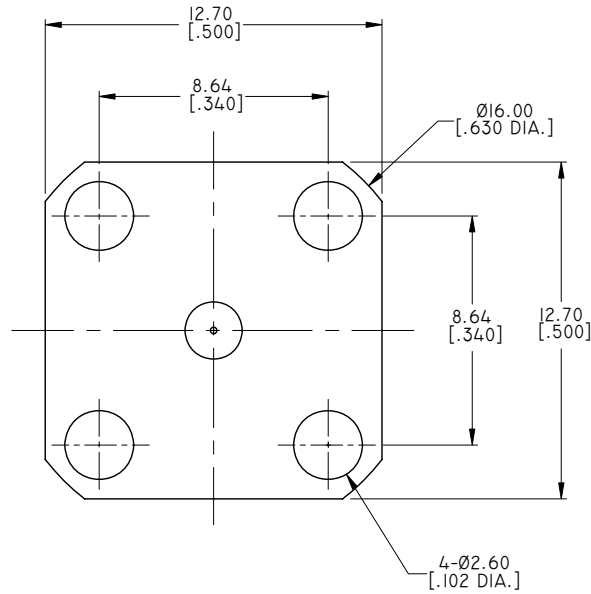
- 1 IMPEDANCE: 50 Ω
- 2 FREQUENCY RANGE: DC~18 GHz
- 3 VSWR: 1.20 MAX.
- 4 INSERTION LOSS: 0.30 DB MAX.

MECHANICAL DATA:

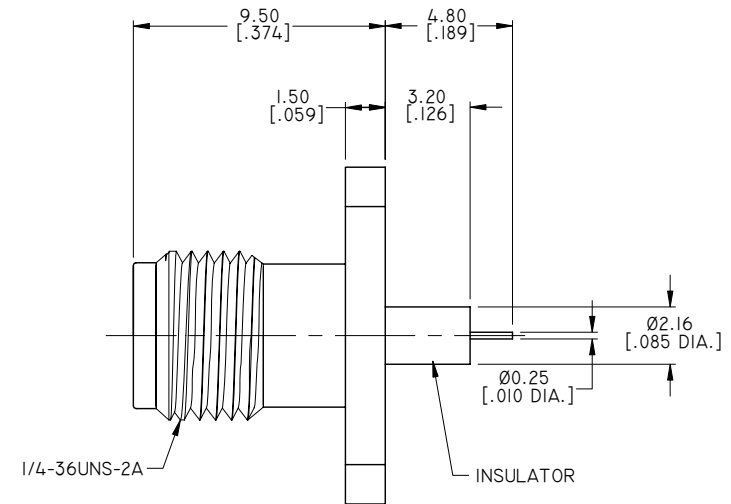
- 1 DURABILITY: 500 CYCLES MIN.

REVISIONS

| REV. | DESCRIPTION | DATE | APPROVED |
|------|--|----------|----------|
| A | INITIAL RELEASE | 08/18/14 | J. QU |
| B | ELECTRICAL AND MECHANICAL DATA CHANGED | 08/22/14 | J. QU |
| C | DRAWING FORMAT CHANGED | 06/27/19 | J. QU |
| D | ANO 2112-3318-1 ADDED | 08/22/19 | J. QU |



RECOMMENDED MOUNTING HOLE



TABLE

| PART NO. | BODY FINISH |
|-----------------|-------------|
| ANO 2112-3318 | GOLD |
| ANO 2112-3318-1 | PASSIVSTED |

| | | | |
|---|---------------|--|----------|
| DRAWN | X. B. YANG | DATE | 08/22/19 |
| CHECKED | W. YANG | DATE | 08/22/19 |
| APPROVED | J. QU | DATE | 08/22/19 |
| UNLESS OTHERWISE SPECIFIED DIMENSIONS ARE IN MILLIMETERS. DIMENSIONS IN [] ARE IN INCHES FOR CUSTOMER REFERENCE ONLY UNLESS OTHERWISE SPECIFIED TOLERANCE ARE: | | THESE DRAWINGS AND SPECIFICATIONS ARE THE PROPERTY OF ANOISON ELECTRONICS LTD AND SHOULD NOT BE USED WITHOUT WRITTEN PERMISSION COPYRIGHT © 2019 ANOISON ELECTRONICS LTD | |
| .XX | ±0.13 [.005"] | | |
| .X | ±0.20 [.008"] | | |
| X | ±0.50 [.019"] | | |
| .X° | ±1° | | |
| X° | ±2° | | |



TITLE
SMA FEMALE, 4 HOLE, .500 SQ. FLANGE MOUNT, POST CONTACT

| | | | | |
|------------|---------------------------|--------------|-----------|--|
| VIEW | PART NO. ANO 2112-3318 | | | |
| SIZE A3 | SCALE 5:1 | SHEET 1/1 | REV. D | |