

4

3

2

1

1.0 MATERIAL & FINISH

1.1 BODY: STAINLESS STEEL, PASSIVATED

1.2 CENTER CONTACT: BERYLLIUM COPPER ALLOY, GOLD PLATING

1.3 INSULATOR: PTFE

1.4 CAPTURE BEAD: PEI

2.0 ENVIRONMENTAL DATA:

2.1 TEMPERATURE RANGE: -55°C~+165°C

2.2 2011/65/EC (RoHS): COMPLIANT

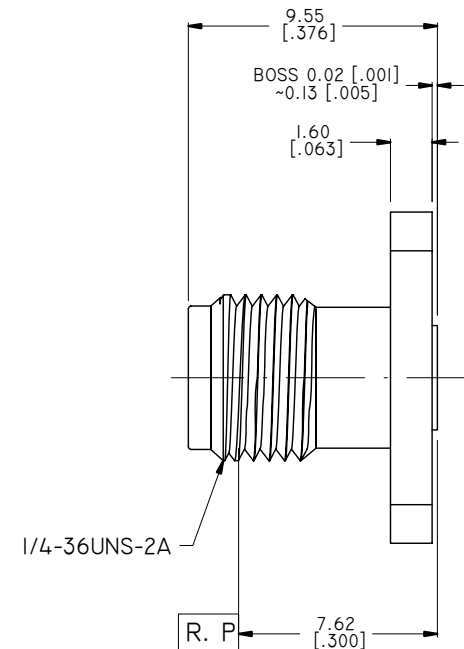
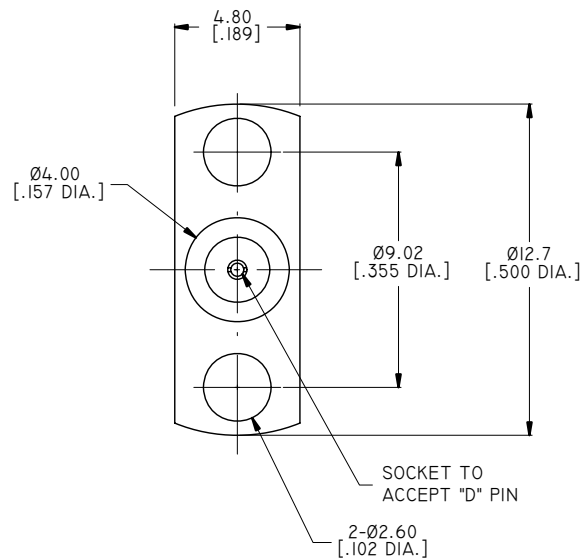
3.0 ELECTRICAL SPECIFICATIONS:

3.1 IMPEDANCE: 50 Ω

3.2 FREQUENCY RANGE: DC~27GHZ

3.3 VSWR: ≤1.10 AT DC~18GHZ

≤1.15 AT 18~27GHZ



PART NO.	D	MAX. PIN DEPTH
ANO 2112-3311-1	Ø0.23 [.009 DIA.]	1.65 [.065]
ANO 2112-3311-2	Ø0.30 [.012 DIA.]	1.91 [.075]
ANO 2112-3311-3	Ø0.38 [.015 DIA.]	2.54 [.100]
ANO 2112-3311-4	Ø0.46 [.018 DIA.]	2.54 [.100]
ANO 2112-3311-5	Ø0.51 [.020 DIA.]	2.54 [.100]

DRAWN	P. CHEN	DATE	07/26/17
CHECKED	L. YANG	DATE	07/26/17
APPROVED	J. QU	DATE	07/26/17

UNLESS OTHERWISE SPECIFIED DIMENSIONS ARE IN MILLIMETERS, DIMENSIONS IN [] ARE IN INCHES FOR CUSTOMER REFERENCE ONLY UNLESS OTHERWISE SPECIFIED TOLERANCE ARE:

.XX	±0.13 [.005"]
.X	±0.20 [.008"]
X	±0.50 [.019"]
.X°	±1°
X°	±2°

THESE DRAWINGS AND SPECIFICATIONS ARE THE PROPERTY OF ANOISON ELECTRONICS LTD AND SHOULD NOT BE USED WITHOUT WRITTEN PERMISSION
 COPYRIGHT © 2017
 ANOISON ELECTRONICS LTD

REVISIONS			
REV.	DESCRIPTION	DATE	APPROVED
D	CHANGED PIN DEPTH	10/18/14	J. QU
E	DRAWING FORMAT CHANGED	07/26/17	J. QU



TITLE
SMA FEMALE 2 HOLE FLANGE, FIELD REPLACEABLE

VIEW	PART NO. ANO 2112-3311			
SIZE A3	SCALE 5:1	SHEET 1/1	REV. E	