

MATERIAL & FINISH:

- 1 BODY: SEE TABLE
- 2 CENTER CONTACT: BERYLLIUM COPPER ALLOY, GOLD PLATED
- 3 INSULATOR: PTFE

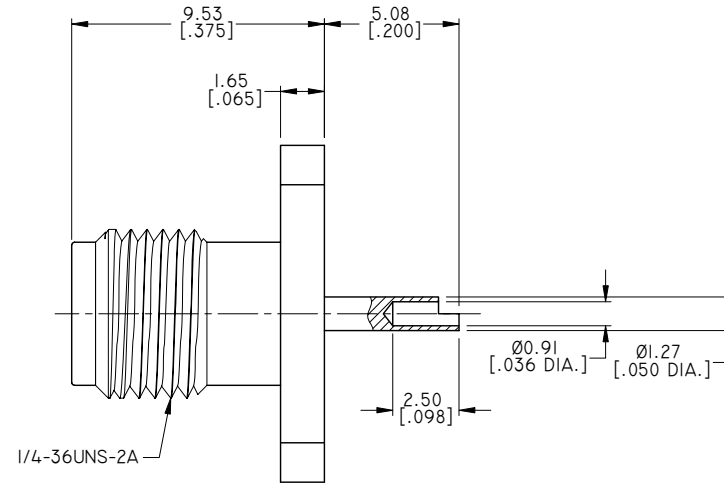
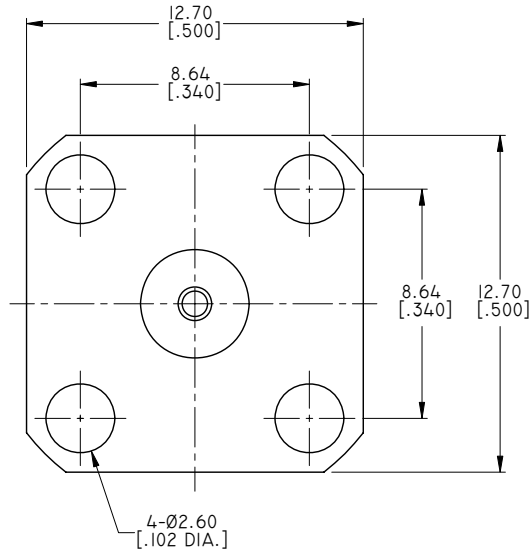
ELECTRICAL DATA:

- 1 IMPEDANCE: 50 Ω
- 2 FREQUENCY RANGE: DC~18 GHZ
- 3 VSWR: 1.25 MAX.

ENVIRONMENTAL DATA:

- 1 TEMPERATURE RANGE: -55°C~+125°C
- 2 2011/65/EU (RoHS): COMPLIANT

REVISIONS			
REV.	DESCRIPTION	DATE	APPROVED
A	INITIAL RELEASE	05/23/12	J. QU
B	DRAWING FORMAT CHANGED	01/29/18	J. QU



TABLE

PART NO.	PART	MATERIAL	FINISH
ANO 2112-3205	BODY	BRASS	GOLD
ANO 2112-3205-I		STAINLESS STEEL	PASSIVATED

DRAWN	X. B. YANG	DATE	01/29/18
CHECKED	W. YANG	DATE	01/29/18
APPROVED	J. QU	DATE	01/29/18
UNLESS OTHERWISE SPECIFIED DIMENSIONS ARE IN MILLIMETERS. DIMENSIONS IN [ ] ARE IN INCHES FOR CUSTOMER REFERENCE ONLY UNLESS OTHERWISE SPECIFIED TOLERANCE ARE:		THESE DRAWINGS AND SPECIFICATIONS ARE THE PROPERTY OF ANOISON ELECTRONICS LTD AND SHOULD NOT BE USED WITHOUT WRITTEN PERMISSION COPYRIGHT © 2018 ANOISON ELECTRONICS LTD	
.XX	±0.13 [.005"]		
.X	±0.20 [.008"]		
X	±0.50 [.019"]		
.X°	±1°		
X°	±2°		



TITLE			
SMA STRAIGHT FEMALE, 4 HOLE FLANGE RECEPTACLE WITH SOLDER POT CONTACT			
VIEW	PART NO.		
	ANO 2112-3205		
	SIZE	SCALE	SHEET
	A3	5:1	I/1
			REV. B