

MATERIAL & FINISH:

- 1 BODY: SEE SCHEDULE
- 2 CENTER CONTACT: BERYLLIUM COPPER ALLOY, GOLD PLATED
- 3 INSULATOR: PTFE

ENVIRONMENTAL DATA:

- 1 TEMPERATURE RANGE: -40°C~+85°C
- 2 2011/65/EU (RoHS): COMPLIANT

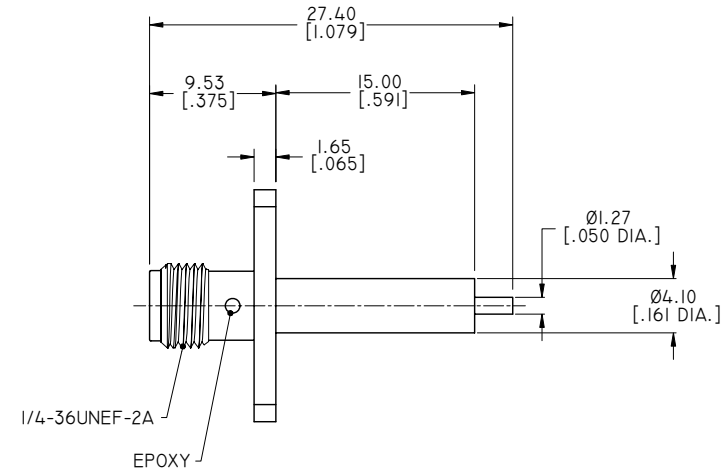
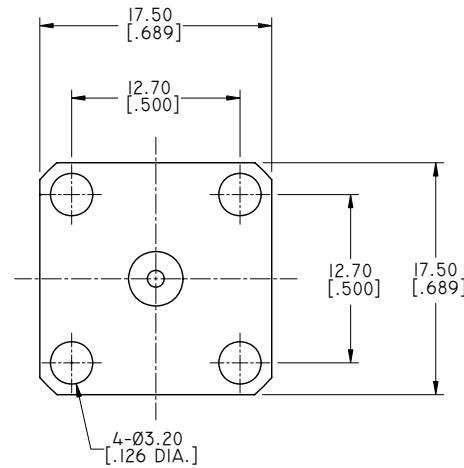
MECHANICAL DATA:

- 1 MATING LIFE: 500 CYCLES MIN.

ELECTRICAL DATA:

- 1 IMPEDANCE: 50 Ω
- 2 FREQUENCY RANGE: DC~18 GHZ
- 3 INSERTION LOSS: 0.05√F(GHZ) DB
- 4 VOLTAGE RATING: 500V MAX.
- 5 DIELECTRIC WITHSTANDING VOLTAGE: 700 V
- 6 RF LEAKAGE: -60 DBM MIN. AT 2~3 GHZ
- 7 INSULATION RESISTANCE: 5000 MΩ

REVISIONS			
REV.	DESCRIPTION	DATE	APPROVED
D	EPOXY ADDED	03/11/16	J. QU
E	ANO 2112-3035-I BODY FINISH NICKEL CHANGED TO ALBALOY	08/14/17	J. QU



PART NO.	BODY	
	MATERIAL	FINISH
ANO 2112-3035	BRASS	GOLD
ANO 2112-3035-1	BRASS	ALBALOY
ANO 2112-3035-2	STAINLESS STEEL	PASSIVATED
ANO 2112-3035-3	STAINLESS STEEL	GOLD

DRAWN	X. B. YANG	DATE	08/14/17
CHECKED	L. YANG	DATE	08/14/17
APPROVED	J. QU	DATE	08/14/17
UNLESS OTHERWISE SPECIFIED DIMENSIONS ARE IN MILLIMETERS. DIMENSIONS IN [] ARE IN INCHES FOR CUSTOMER REFERENCE ONLY UNLESS OTHERWISE SPECIFIED TOLERANCE ARE:		THESE DRAWINGS AND SPECIFICATIONS ARE THE PROPERTY OF ANOISON ELECTRONICS LTD AND SHOULD NOT BE USED WITHOUT WRITTEN PERMISSION COPYRIGHT © 2017 ANOISON ELECTRONICS LTD	
.XX	±0.13 [.005"]		
.X	±0.20 [.008"]		
X	±0.50 [.019"]		
.X°	±1°		
X°	±2°		



TITLE			
SMA STRAIGHT FEMALE SOLDER ATTACHMENT 4 HOLE FLANGE STUB TERMINAL, .500 INCH HOLE SPACING			
VIEW	PART NO.		
	ANO 2112-3035		
SIZE	SCALE	SHEET	REV.
A3	2.5:1	1/1	E