

REVISIONS			
REV.	DESCRIPTION	DATE	APPROVED
A	INITIAL RELEASE	04/27/17	J. Q
B	PART NO. ANO 2112-2451-2 ADDED	02/16/23	J. Q
C	CENTER CONTACT DIMENSIONS ADDED	02/28/25	J. Q

**MATERIAL & FINISH:**

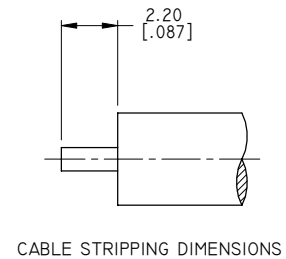
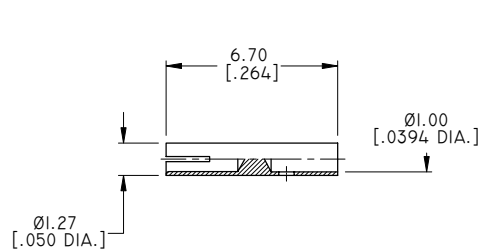
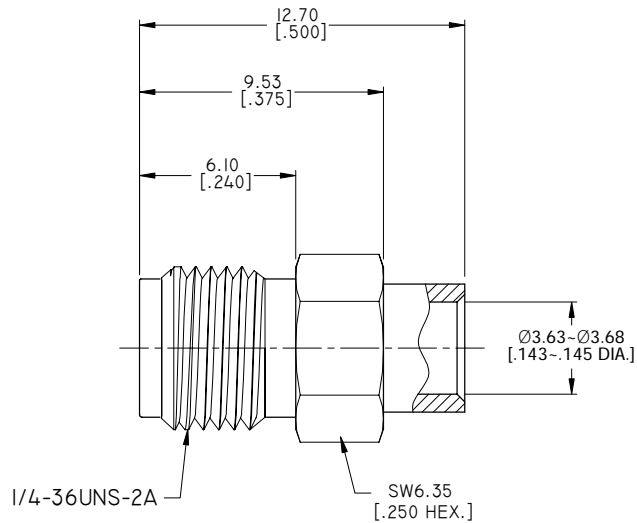
- 1 BODY: SEE TABLE
- 2 CENTER CONTACT: BERYLLIUM COPPER ALLOY, GOLD PLATED
- 3 INSULATOR: PTFE

**ENVIRONMENTAL DATA:**

- 1 TEMPERATURE RANGE: -55°C~+125°C
- 2 2011/65/EU (RoHS): COMPLIANT

**ELECTRICAL DATA:**

- 1 IMPEDANCE: 50 Ω
- 2 FREQUENCY RANGE: DC~18 GHz
- 3 VSWR: 1.05+.010 X F(GHZ) MAX.
- 4 D.W.V.: 1500 VRMS
- 5 INSUL. RES.: 5000 MEGOHMS MIN.



TABLE

PART NO.	PART	MATERIAL	FINISH
ANO 2112-2451	BODY	BRASS	GOLD
ANO 2112-2451-1		STAINLESS STEEL	GOLD
ANO 2112-2451-2		PHOSPHOR BRONZE	SILVER

DRAWN	X. Y	DATE	02/28/25
CHECKED	W. Y	DATE	02/28/25
APPROVED	J. Q	DATE	02/28/25
UNLESS OTHERWISE SPECIFIED DIMENSIONS ARE IN MILLIMETERS, DIMENSIONS IN [ ] ARE IN INCHES FOR CUSTOMER REFERENCE ONLY UNLESS OTHERWISE SPECIFIED TOLERANCE ARE:		THESE DRAWINGS AND SPECIFICATIONS ARE THE PROPERTY OF ANOISON ELECTRONICS LTD AND SHOULD NOT BE USED WITHOUT WRITTEN PERMISSION COPYRIGHT © 2025 ANOISON ELECTRONICS LTD	
.XX	±0.08 [0.003"]		
.X	±0.20 [0.008"]		
X	±0.50 [0.019"]		
.X°	±1°		
X°	±2°		



TITLE  
SMA STRAIGHT FEMALE, SOLDER FOR SRI41 CABLE

VIEW	PART NO. ANO 2112-2451		
	SIZE A3	SCALE 5:1	SHEET 1/1
		REV. C	