

MATERIAL & FINISH:

1. BODY: STAINLESS STEEL, PASSIVATED
2. CABLE SLEEVE: BRASS, GOLD PLATED
3. CENTER CONTACT: BERYLLIUM COPPER ALLOY, GOLD PLATED
4. INSULATOR: PTFE

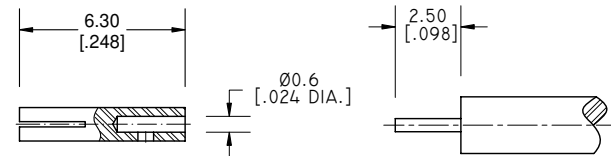
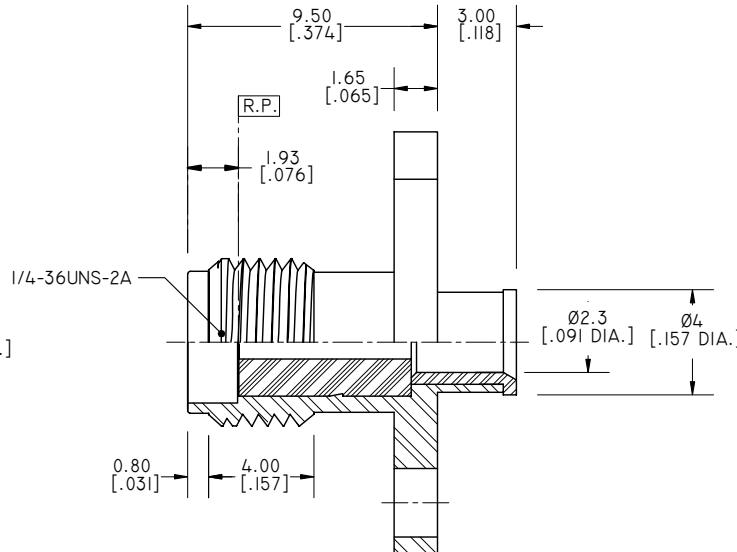
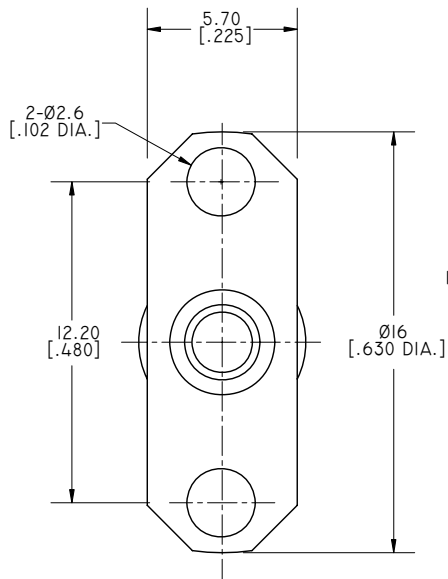
ELECTRICAL DATA:

1. IMPEDANCE: 50 Ω
2. FREQUENCY RANGE: DC~18GHZ
3. VSWR: 1.30 MAX.

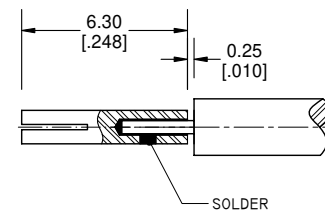
ENVIRONMENTAL DATA:

1. TEMPERATURE RANGE: -55°C~+125°C
2. 2011/65/EU(RoHS) AND 2015/863/(RoHS): COMPLIANT
3. 1999/45/EC(REACH): COMPLIANT

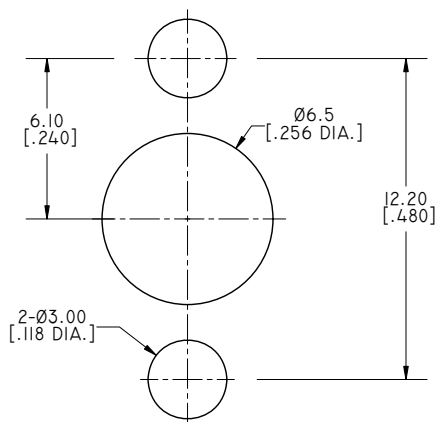
REVISIONS			
REV.	DESCRIPTION	DATE	APPROVED
A	INITIAL RELEASE	11/24/15	J. QU
B	CENTER CONTACT LENGTH 6.3 WAS 6.5	12/19/15	J. QU
C	CHANGED ELECTRICAL DATA	10/23/18	J. QU



CABLE STRIPPING DIMENSIONS



CABLE ASSEMBLY DIMENSIONS



RECOMMENDED MOUNTING HOLE

DRAWN	P. CHEN	DATE	10/23/18
CHECKED	L. YANG	DATE	10/23/18
APPROVED	J. QU	DATE	10/23/18

UNLESS OTHERWISE SPECIFIED DIMENSIONS ARE IN MILLIMETERS, DIMENSIONS IN [] ARE IN INCHES FOR CUSTOMER REFERENCE ONLY UNLESS OTHERWISE SPECIFIED TOLERANCE ARE:

.XX	±0.13 [.005"]
.X	±0.20 [.008"]
.X	±0.50 [.019"]
.X°	±1°
X°	±2°

THESE DRAWINGS AND SPECIFICATIONS ARE THE PROPERTY OF ANOISON ELECTRONICS LTD AND SHOULD NOT BE USED WITHOUT WRITTEN PERMISSION COPYRIGHT © 2018 ANOISON ELECTRONICS LTD



TITLE
SMA STRAIGHT FEMALE FLANG, 2 HOLE, FOR .086 CABLE

VIEW	PART NO. ANO 2112-2365			
SIZE	A3	SCALE	5:1	SHEET I/1
REV.	C			