

4

3

2

1

MATERIAL & FINISH:

- 1 BODY: SEE TABLE
- 2 CENTER CONTACT: BERYLLIUM COPPER ALLOY, GOLD PLATED
- 3 INSULATOR: PTFE

ELECTRICAL SPECIFICATIONS:

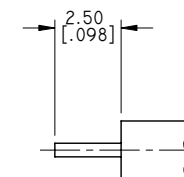
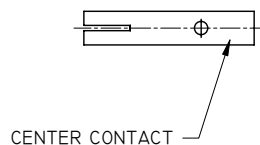
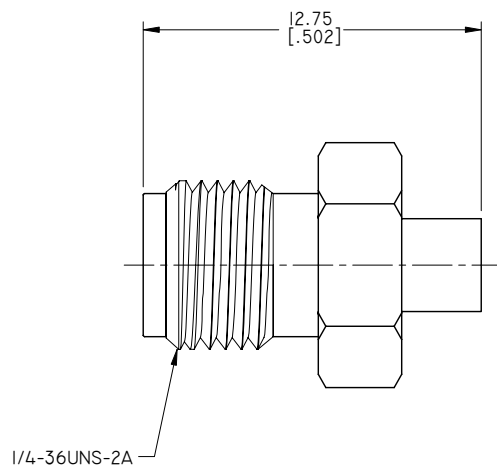
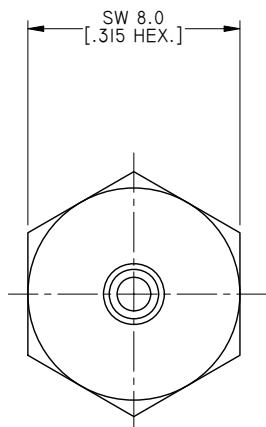
- 1 IMPEDANCE: 50 Ω
- 2 FREQUENCY RANGE: DC~18GHZ

ENVIRONMENTAL DATA:

- 1 TEMPERATURE RANGE: -65°C~+165°C
- 2 2011/65/EU (RoHS): COMPLIANT

REVISIONS

REV.	DESCRIPTION	DATE	APPROVED
A	INITIAL RELEASE	02/13/17	J. QU
B	CABLE STRIPPING DIMENSIONS 2.50 [.098] ADDED	02/14/17	J. QU



CABLE STRIPPING DIMENSIONS

TABLE

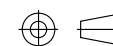
PART NO.	PART	MATERIAL	FINISH
ANO 2112-2269-1	BODY	BRASS	GOLD
ANO 2112-2269-2		STAINLESS STEEL	GOLD

DRAWN	X. B. YANG	DATE	02/14/17
CHECKED	P. CHEN	DATE	02/14/17
APPROVED	J. QU	DATE	02/14/17
UNLESS OTHERWISE SPECIFIED DIMENSIONS ARE IN MILLIMETERS, DIMENSIONS IN [] ARE IN INCHES FOR CUSTOMER REFERENCE ONLY UNLESS OTHERWISE SPECIFIED TOLERANCE ARE:		THESE DRAWINGS AND SPECIFICATIONS ARE THE PROPERTY OF ANOISON ELECTRONICS LTD AND SHOULD NOT BE USED WITHOUT WRITTEN PERMISSION COPYRIGHT © 2017 ANOISON ELECTRONICS LTD	
.XX	±0.13 [.005"]		
.X	±0.20 [.008"]		
X	±0.50 [.019"]		
.X°	±1°		
X°	±2°		



TITLE
SMA STRAIGHT FEMALE SOLER FOR .086 CABLE

VIEW



PART NO.

ANO 2112-2269

SIZE
A3SCALE
5:1SHEET
1/1REV.
B

4

3

2

1