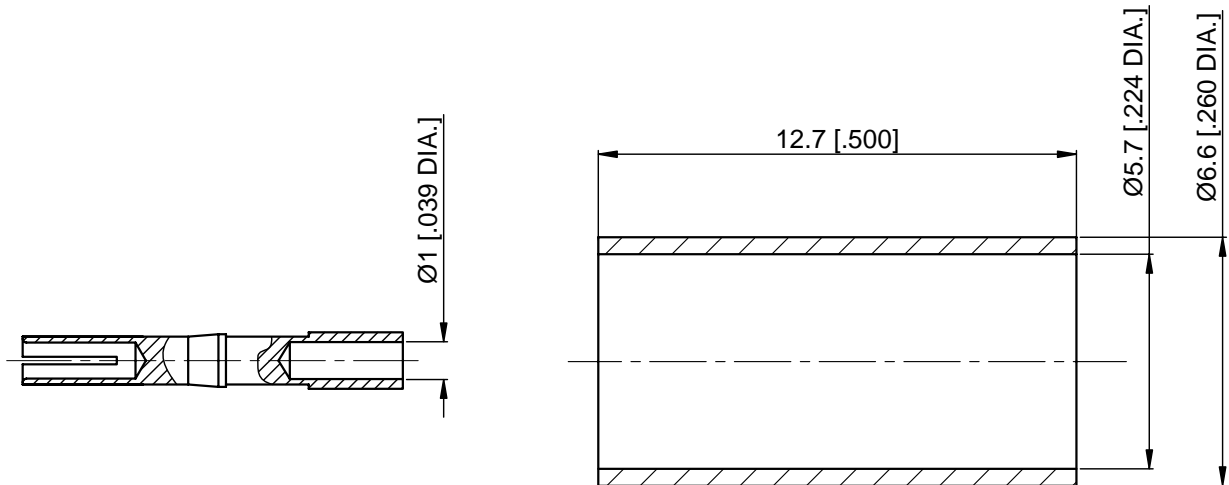
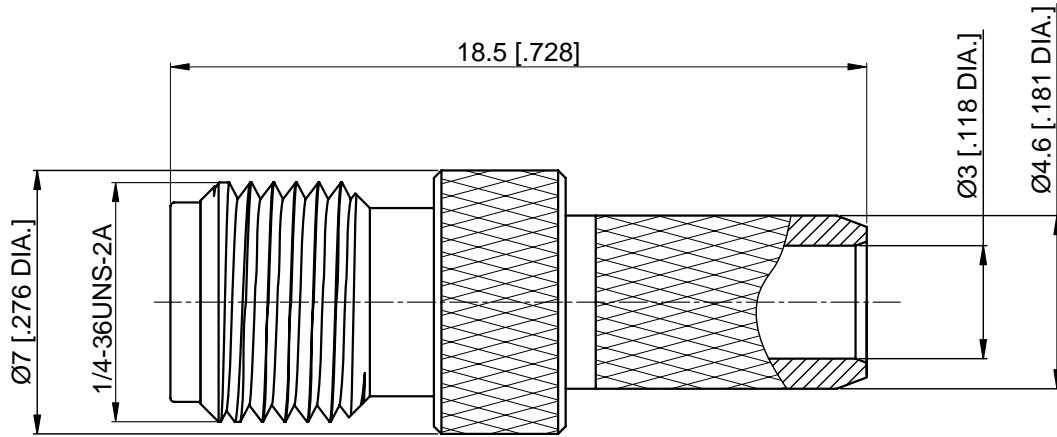
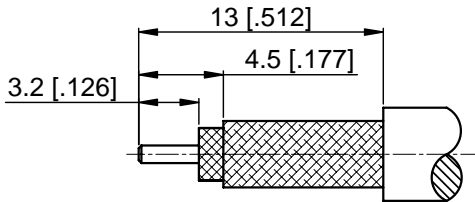


DESCRIPTION	MATERIAL	FINISH
Center Contact	Beryllium Copper Alloy	Gold
Body	Brass	Albaloy
Crimp Ferrule	Copper	Nickel
Insulator	PTFE	—



CRIMP SIZES REQUIRED
 FERRULE: 5 4 [.213]
 HEX. CRIMP TOOL



CABLE STRIPPING DIMENSIONS

NOTES:

1. ALL SPECIFICATIONS ARE SUBJECT TO CHANGE WITHOUT NOTICE AT ANY TIME
2. CUSTOMER OUTLINE DRAWING FOR REFERENCE ONLY

Finish Changed	—	07/11/12	B	Drawn: H. Zhang 07/11/12
Release to Mfg.	—	05/19/12	A	Checked: L. Yang 07/11/12
Description	Ecn.No	Date	Rev	Approved: J. Qu 07/11/12

Title:
**SMA Straight Female Crimp for
 RG142 Cable**



Unless otherwise specified dimensions are in millimeters, dimensions in [] are in inches for customer reference only.

Unless Otherwise Specified tolerance are:

.XX	±0.13 [.005"]
.X	±0.20 [.008"]
X	±0.50 [.019"]
.X°	±1°
X°	±2°

View:



Part No:

ANO 2112-2224

Size: A4	Scale: 5:1	Sheet: 1/1	Rev: B
-------------	---------------	---------------	-----------