

1.0 MATERIAL & FINISH:

- 1.1 BODY: SEE TABLE
- 1.2 CENTER CONTACT: BERYLLIUM COPPER ALLOY, GOLD PLATED
- 1.3 FASTENING NUT: SEE TABLE
- 1.4 INSULATOR: PTFE
- 1.5 O-RING: MVQ(SILICONE RUBBER)

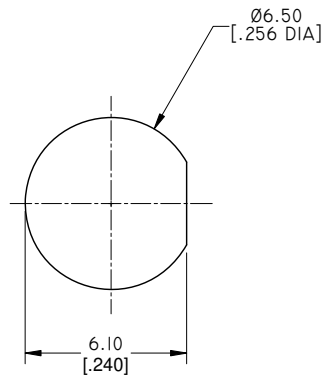
2.0 ENVIRONMENTAL DATA:

- 2.1 TEMPERATURE RANGE: -55°C~+125°C
- 2.2 2011/65/EU (RoHS): COMPLIANT

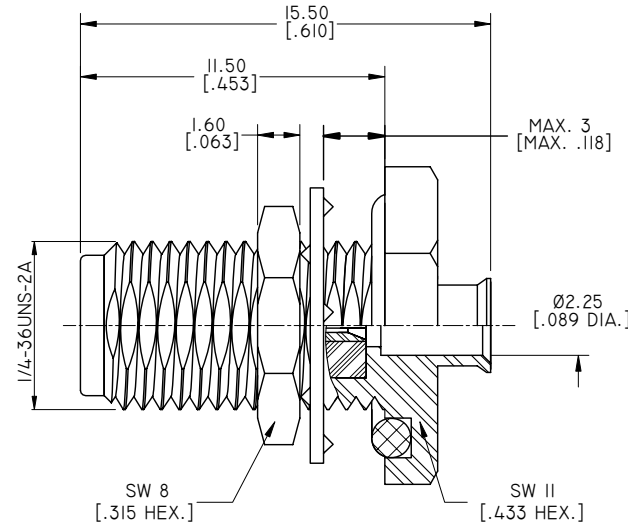
3.0 ELECTRICAL DATA:

- 3.1 IMPEDANCE: 50 Ω
- 3.2 FREQUENCY RANGE: DC~27 GHz

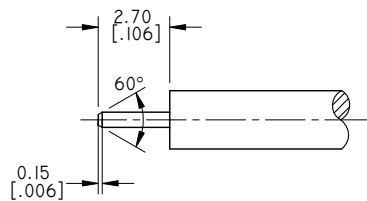
REVISIONS			
REV.	DESCRIPTION	DATE	APPROVED
A	INITIAL RELEASE	05/11/17	J. QU



RECOMMENDED MOUNTING HOLE



PART NO.	PART	MATERIAL	FINISH
ANO 2112-2216	BODY	BRASS	GOLD
	FASTENING NUT	BRASS	GOLD
ANO 2112-2216-1	BODY	STAINLESS STEEL	GOLD
	FASTENING NUT	STAINLESS STEEL	PASSIVATED



CABLE STRIPPING DIMENSIONS

DRAWN	L. YANG	DATE	05/11/17
CHECKED	W. YANG	DATE	05/11/17
APPROVED	J. QU	DATE	05/11/17
UNLESS OTHERWISE SPECIFIED DIMENSIONS ARE IN MILLIMETERS. DIMENSIONS IN [] ARE IN INCHES FOR CUSTOMER REFERENCE ONLY UNLESS OTHERWISE SPECIFIED TOLERANCE ARE:		THESE DRAWINGS AND SPECIFICATIONS ARE THE PROPERTY OF ANOISON ELECTRONICS LTD AND SHOULD NOT BE USED WITHOUT WRITTEN PERMISSION COPYRIGHT © 2017 ANOISON ELECTRONICS LTD	
.XX	±0.13 [0.005"]		
.X	±0.20 [0.008"]		
X	±0.50 [0.019"]		
.X°	±1°		
X°	±2°		



TITLE
SMA STRAIGHT BULKHEAD WATERPROOF FEMALE SOLDER FOR .086 CABLE, CAPTIVATED CONTACT

VIEW	PART NO. ANO 2112-2216		
	SIZE A3	SCALE 5:1	SHEET 1/1
	REV. A		