

MATERIAL & FINISH:

- 1. BODY: BRASS, NICKEL PLATED
- 2. CENTER CONTACT: BERYLLIUM COPPER ALLOY, GOLD PLATED
- 3. CRIMP FERRULE: COPPER, NICKEL PLATED
- 4. INSULATOR: PTFE

ELECTRICAL DATA:

- 1. IMPEDANCE: 50 Ω
- 2. FREQUENCY RANGE: DC~6GHZ
- 3. VSWR: 1.30 MAX.

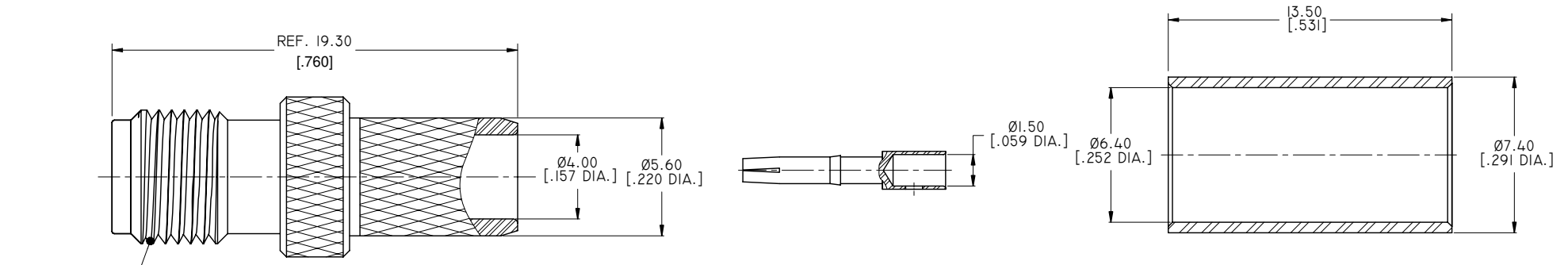
ENVIRONMENTAL DATA:

- 1. TEMPERATURE RANGE: -55°C~+165°C
- 2. 2011/65/EU (RoHS): COMPLIANT

MECHANICAL DATA

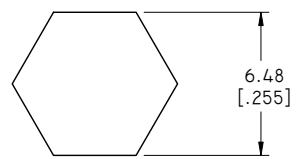
- 1. CABLE RETENTION: >40 POUNDS

REVISIONS			
REV.	DESCRIPTION	DATE	APPROVED
E	CHANGED THE CABLE STRIPPING DIMENSIONS	07/14/15	J. QU
F	DRAWING FORMAT CHANGED	07/25/17	J. QU

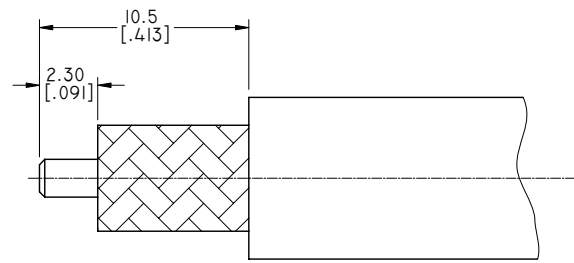


1/4-36UNS-2A

HEX. CRIMP TOOL



CRIMP WIDTH: 12.7 [.500]



CABLE STRIPPING DIMENSIONS

DRAWN	P. CHEN	DATE	07/25/17
CHECKED	L. YANG	DATE	07/25/17
APPROVED	J. QU	DATE	07/25/17
UNLESS OTHERWISE SPECIFIED DIMENSIONS ARE IN MILLINMETERS. DIMENSIONS IN [ ] ARE IN INCHES FOR CUSTOMER REFERENCE ONLY UNLESS OTHERWISE SPECIFIED TOLERANCE ARE:		THESE DRAWINGS AND SPECIFICATIONS ARE THE PROPERTY OF ANOISON ELECTRONICS LTD AND SHOULD NOT BE USED WITHOUT WRITTEN PERMISSION COPYRIGHT © 2017 ANOISON ELECTRONICS LTD	
.XX	±0.13 [.005"]		
.X	±0.20 [.008"]		
X	±0.50 [.019"]		
.X°	±1°		
X°	±2°		



TITLE			
SMA STRAIGHT FEMALE CRIMP FOR LMR240 CABLE			
VIEW		PART NO.	
		ANO 2112-2131	
SIZE	SCALE	SHEET	REV.
A3	5:1	1/1	F