

**MATERIAL & FINISH:**

1. BODY: SEE TABLE
2. CENTER CONTACT: SEE TABLE
3. CRIMP FERRULE: COPPER, NICKEL PLATED
4. WASHER: SEE TABLE
5. FASTENING NUT: SEE TABLE
6. INSULATOR: PTFE

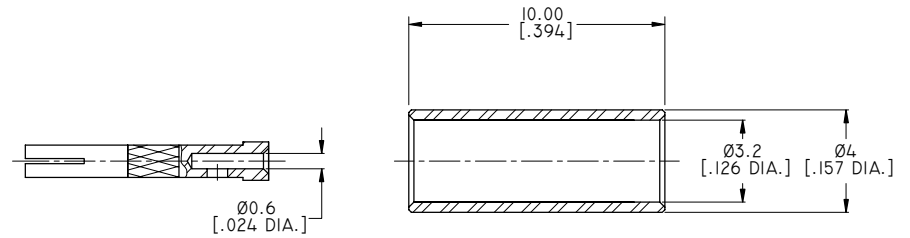
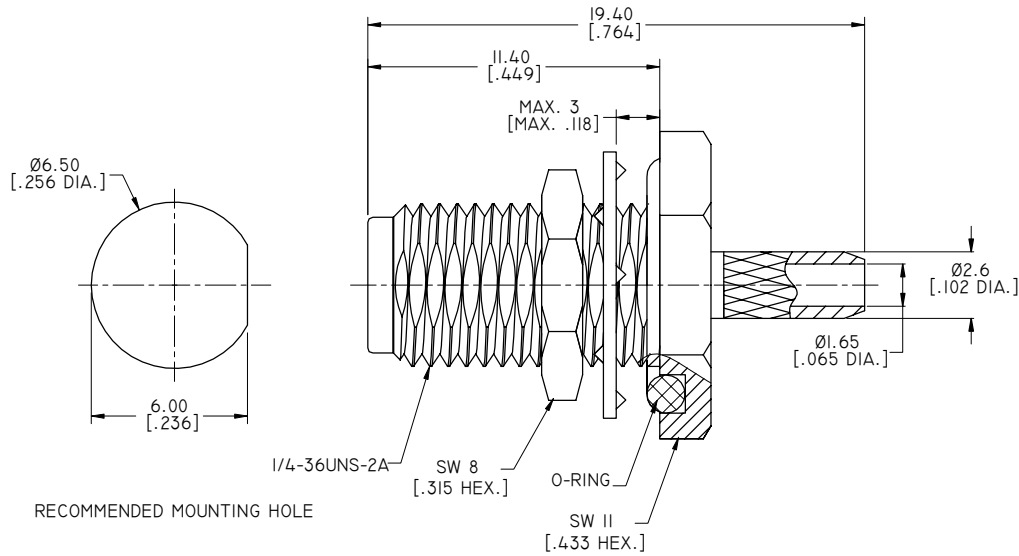
**ELECTRICAL DATA:**

1. IMPEDANCE: 50 Ω
2. FREQUENCY RANGE: DC~6GHZ
3. VSWR: 1.30 MAX.

**ENVIRONMENTAL SPECIFICATIONS :**

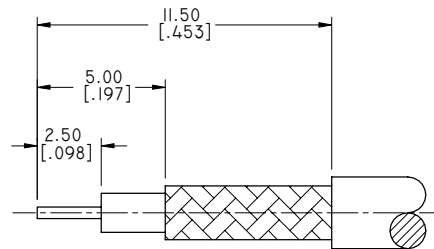
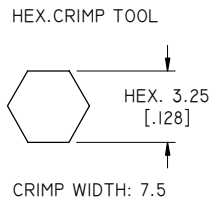
1. TEMPERATURE RANGE: -55°C~+125°C
2. 2011/65/EU ( RoHS) AND 2015/863/(RoHS): COMPLIANT
3. 1999/45/EC(REACH): COMPLIANT

REVISIONS			
REV.	DESCRIPTION	DATE	APPROVED
A	INITIAL RELEASE	02/07/18	J. Q
B	PART NO. ANO 2112-1488-1 AND ANO 2112-1488-2 ADDED	09/19/19	J. Q
C	PART NO. ANO 2112-1488-3 ADDED	01/06/23	J. Q



TABLE

PART NO.	PART	MATERIAL	FINISH
ANO 2112-1488	BODY	BRASS	GOLD
	CENTER CONTACT	BERYLLIUM COPPER ALLOY	GOLD
	WASHER	PHOSPHOR BRONZE	GOLD
	FASTENING NUT	BRASS	GOLD
ANO 2112-1488-1	BODY	BRASS	ALBALOY
	CENTER CONTACT	BERYLLIUM COPPER ALLOY	SILVER
	WASHER	PHOSPHOR BRONZE	ALBALOY
ANO 2112-1488-2	FASTENING NUT	BRASS	ALBALOY
	BODY	STAINLESS STEEL	PASSIVATED
	CENTER CONTACT	BERYLLIUM COPPER ALLOY	GOLD
ANO 2112-1488-3	WASHER	PHOSPHOR BRONZE	NICKEL
	FASTENING NUT	BRASS	NICKEL
	BODY	STAINLESS STEEL	PASSIVATED



CABLE STRIPPING DIMENSIONS

DRAWN	X. Y	DATE	01/06/23
CHECKED	W. Y	DATE	01/06/23
APPROVED	J. Q	DATE	01/06/23

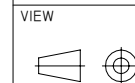


TITLE  
SMA STRAIGHT BULKHEAD WATERPROOF FEMALE CRIMP FOR RG174/RG188/RG316/LMR100 CABLE

UNLESS OTHERWISE SPECIFIED DIMENSIONS ARE IN MILLINETERS, DIMENSIONS IN [ ] ARE IN INCHES FOR CUSTOMER REFERENCE ONLY UNLESS OTHERWISE SPECIFIED TOLERANCE ARE:

.XX	±0.13 [.005"]
.X	±0.20 [.008"]
X	±0.50 [.019"]
.X°	±1°
X°	±2°

THESE DRAWINGS AND SPECIFICATIONS ARE THE PROPERTY OF ANOISON ELECTRONICS LTD AND SHOULD NOT BE USED WITHOUT WRITTEN PERMISSION  
COPYRIGHT © 2023 ANOISON ELECTRONICS LTD



PART NO. ANO 2112-1488			
SIZE A3	SCALE 5:1	SHEET 1/1	REV. C